

Nur für Forschungszwecke

# TOP2A-Specific Polyklonaler Antikörper



Katalog-Nr.: 20233-1-AP

Vorgestelltes Produkt

16 Publikationen

## Allgemeine Informationen

<b>Katalog-Nr.:</b> 20233-1-AP	<b>GenBank-Zugangsnummer:</b> NM_001067	<b>Reinigungsmethode:</b> Antigen-Affinitätsreinigung
<b>Größe:</b> 150ul, Konzentration: 450 µg/ml von Nanodrop;	<b>GeneID (NCBI):</b> 7153	<b>Empfohlene Verdünnungen:</b> WB 1:500-1:3000 IP 0.5-4.0 ug für IP und 1:500-1:1000 für WB
<b>Wirt:</b> Kaninchen	<b>Vollständiger Name:</b> topoisomerase (DNA) II alpha 170kDa	<b>IHC 1:20-1:200</b> <b>IF 1:10-1:100</b>
<b>Isotyp:</b> IgG	<b>Berechnete Masse:</b> 174 kDa	
	<b>Beobachtete Masse:</b> 170-177 kDa	

## Anwendungen

<b>Geprüfte Anwendungen:</b> IF, IHC, IP, WB, ELISA	<b>Positivkontrollen:</b> WB: HeLa-Zellen, A431-Zellen, HepG2-Zellen, L02-Zellen
<b>In Publikationen genannte Anwendungen:</b> IF, IHC, WB	<b>IP:</b> HeLa-Zellen,
<b>Getestete Reaktivität:</b> Human	<b>IHC:</b> humanes Milzgewebe, Maushodengewebe
<b>Zitierte Arten:</b> Human, Maus	<b>IF:</b> HepG2-Zellen,

**Hinweis-IHC: Antigendemaskierung mit TE-Puffer pH 9,0 empfohlen. (\*) Wahlweise kann die Antigendemaskierung auch mit Citratpuffer pH 6,0 erfolgen.**

## Hintergrundinformationen

TOP2A, also named as TOP2, belongs to the type II topoisomerase family. Topoisomerase II makes double-strand breaks. TOP2 control the topological states of DNA by transient breakage and subsequent rejoining of DNA strands. TOP2A may play a role in regulating the period length of ARNTL/BMAL1 transcriptional oscillation. DNA topoisomerase IIa (170 kDa, TOP2a/170) is essential in proliferating cells by resolving DNA topological entanglements during chromosome condensation, replication, and segregation.

## Bemerkenswerte Veröffentlichungen

Verfasser	Pubmed ID	Journal	Anwendung
Yi Fang	31662984	Biomed Res Int	WB
Xuefeng Li	25237769	Oncotarget	WB
Carlo Cattrini	33091733	Cancer Treat Res Commun	WB

## Lagerung

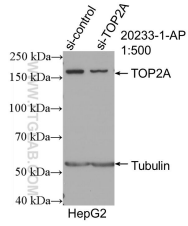
**Lagerungsbedingungen:**  
Bei -20°C lagern. Nach dem Versand ein Jahr lang stabil  
**Lagerungspuffer:**  
PBS mit 0.02% Natriumazid und 50% Glycerin pH 7.3.  
Aliquotieren ist nicht notwendig bei -20°C Lagerung

\*\*\* 20ul-Größen enthalten 0.1% BSA

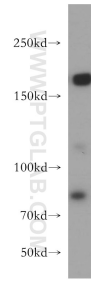
For technical support and original validation data for this product please contact:  
T: 1 (888) 4PTGLAB (1-888-478-4522) (toll free in USA), or 1(312) 455-8498 (outside USA)  
E: proteintech@ptglab.com  
W: ptglab.com

This product is exclusively available under Proteintech Group brand and is not available to purchase from any other manufacturer.

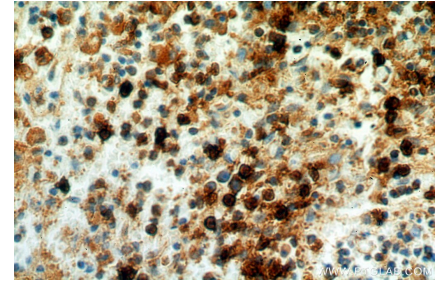
## Ausgewählte Validierungsdaten



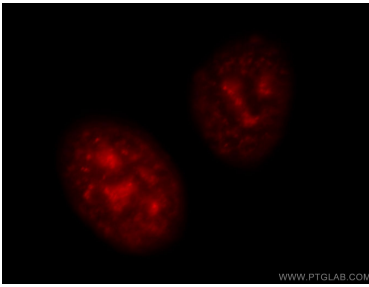
WB result of TOP2A-specific antibody (20233-1-AP; 1:500; incubated at room temperature for 1.5 hours) with sh-Control and sh-TOP2A-Specific transfected HepG2 cells.



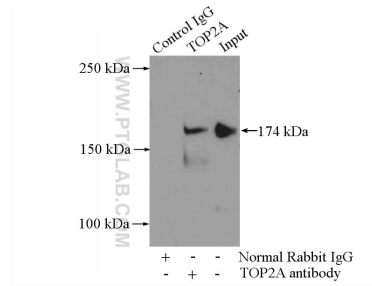
HeLa cells were subjected to SDS PAGE followed by western blot with 20233-1-AP (TOP2A-Specific antibody) at dilution of 1:400 incubated at room temperature for 1.5 hours.



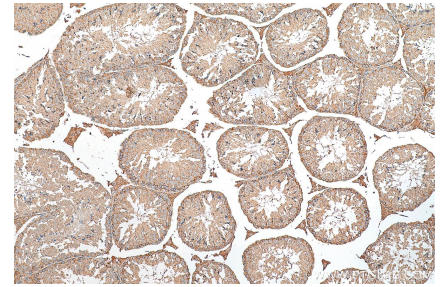
Immunohistochemical analysis of paraffin-embedded human spleen using 20233-1-AP (TOP2A-Specific antibody) at dilution of 1:100 (under 40x lens).



Immunofluorescent analysis of HepG2 cells, using TOP2A antibody 20233-1-AP at 1:25 dilution and Rhodamine-labeled goat anti-rabbit IgG (red).



IP Result of anti-TOP2A-Specific (IP:20233-1-AP, 4ug; Detection:20233-1-AP 1:500) with HeLa cells lysate 2000ug.



Immunohistochemical analysis of paraffin-embedded mouse testis tissue slide using 20233-1-AP (TOP2A-Specific antibody) at dilution of 1:200 (under 10x lens). Heat mediated antigen retrieval with Tris-EDTA buffer (pH 9.0).