

Nur für Forschungszwecke

IGF2R-Specific Polyklonaler Antikörper



Katalog-Nr.: 20253-1-AP

15 Publikationen

Allgemeine Informationen

Katalog-Nr.: 20253-1-AP	GenBank-Zugangsnummer: NM_000876	Reinigungsmethode: Antigen-Affinitätsreinigung
Größe: 150ul, Konzentration: 700 µg/ml von Nanodrop;	GeneID (NCBI): 3482	Empfohlene Verdünnungen: WB 1:1000-1:6000
Wirt: Kaninchen	Vollständiger Name: insulin-like growth factor 2 receptor	IP 0.5-4.0 ug für IP und 1:500-1:1000 für WB
Isotyp: IgG	Berechnete Masse: 274 kDa	IHC 1:20-1:200
	Beobachtete Masse: 300 kDa	IF 1:20-1:200

Anwendungen

Geprüfte Anwendungen:
FC, IF, IHC, IP, WB, ELISA

In Publikationen genannte Anwendungen:
IF, IHC, WB

Getestete Reaktivität:
Human

Zitierte Arten:
Human, Maus, Ratte, Rind

Hinweis-IHC: Antigenmaskierung mit TE-Puffer pH 9,0 empfohlen. (*) Wahlweise kann die Antigenmaskierung auch mit Citratpuffer pH 6,0 erfolgen.

Positivkontrollen:

WB: A431-Zellen, HepG2-Zellen, L02-Zellen

IP: HepG2-Zellen,

IHC: humanes Leberkarzinomgewebe, humanes Lebergewebe

IF: HepG2-Zellen,

Hintergrundinformationen

IGF2R, also named as MPRI, CI Man-6-P receptor, CI-MPR, M6PR, IGF-II receptor, M6P/IGF2R, MPR 300 and CD222, belongs to the MRL1/IGF2R family. IGF2R transports phosphorylated lysosomal enzymes from the Golgi complex and the cell surface to lysosomes. IGF2R is a lysosomal enzyme bearing phosphomannosyl residues bind specifically to mannose-6-phosphate receptors in the Golgi apparatus and the resulting receptor-ligand complex is transported to an acidic prelysosomal compartment where the low pH mediates the dissociation of the complex. This receptor also binds IGF2. IGF2R acts as a positive regulator of T-cell coactivation, by binding DPP4. The antibody is specific to IGF2R.

Bemerkenswerte Veröffentlichungen

Verfasser	Pubmed ID	Journal	Anwendung
Weichao Zhang	36096887	Nat Commun	WB
Ya Hui	36302455	Metabolism	WB,IF
Bing Liu	36299463	Front Endocrinol (Lausanne)	IHC

Lagerung

Lagerungsbedingungen:

Bei -20°C lagern. Nach dem Versand ein Jahr lang stabil

Lagerungspuffer:

PBS mit 0.02% Natriumazid und 50% Glycerin pH 7.3.

Aliquotieren ist nicht notwendig bei -20°C Lagerung

*** 20ul-Größen enthalten 0.1% BSA

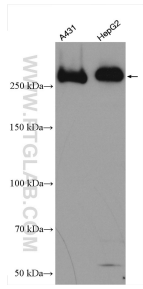
For technical support and original validation data for this product please contact:

T: 1 (888) 4PTGLAB (1-888-478-4522) (toll free in USA), or 1(312) 455-8498 (outside USA)

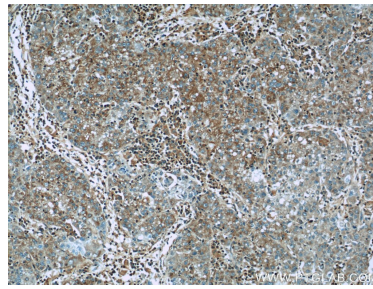
E: proteintech@ptglab.com
W: ptglab.com

This product is exclusively available under Proteintech Group brand and is not available to purchase from any other manufacturer.

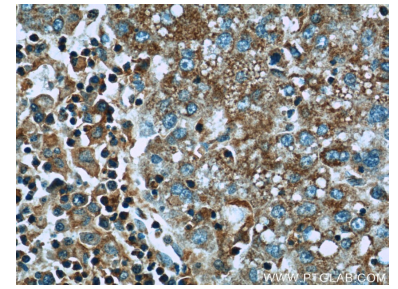
Ausgewählte Validierungsdaten



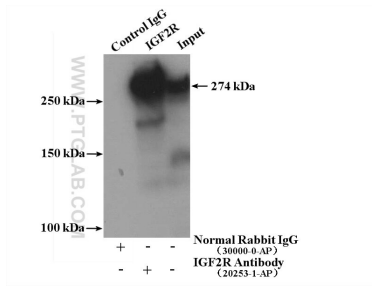
Various lysates were subjected to SDS PAGE followed by western blot with 20253-1-AP (IGF2R-Specific antibody) at dilution of 1:3000 incubated at room temperature for 1.5 hours.



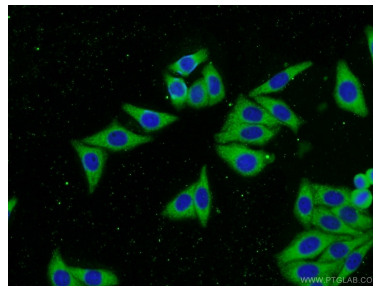
Immunohistochemical analysis of paraffin-embedded human liver cancer slide using 20253-1-AP (IGF2R-Specific Antibody) at dilution of 1:50.



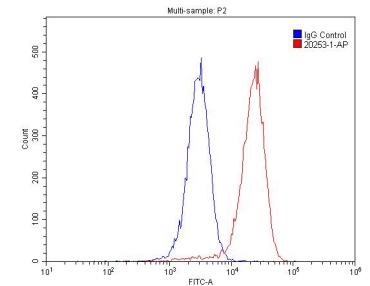
Immunohistochemical analysis of paraffin-embedded human liver cancer slide using 20253-1-AP (IGF2R-Specific Antibody) at dilution of 1:50.



IP Result of anti-IGF2R-Specific (IP:20253-1-AP, 4ug; Detection:20253-1-AP 1:500) with HepG2 cells lysate 3480ug.



Immunofluorescent analysis of HepG2 cells using 20253-1-AP (IGF2R-Specific antibody) at dilution of 1:50 and Alexa Fluor 488-conjugated AffiniPure Goat Anti-Rabbit IgG(H+L).



1X10⁶ HepG2 cells were stained with .2ug IGF2R-Specific antibody (20253-1-AP, red) and control antibody (blue). Alexa Fluor 488-conjugated AffiniPure Goat Anti-Rabbit IgG(H+L) with dilution 1:1500. Cells were fixed with 4% PFA and permeabilized with 0.1% Triton X-100.