

Nur für Forschungszwecke

# IGF1R Beta Chain Polyklonaler Antikörper



Katalog-Nr.: 20254-1-AP

Vorgestelltes Produkt

40 Publikationen

## Allgemeine Informationen

|  |  |   |
|--|--|---|
| <b>Katalog-Nr.:</b><br>20254-1-AP  | <b>GenBank-Zugangsnummer:</b><br>NM_000875   | <b>Reinigungsmethode:</b><br>Antigen-Affinitätsreinigung  |
| <b>Größe:</b><br>150ul, Konzentration: 500 µg/ml von Nanodrop und 360 µg/ml durch die Bradford-Methode mit BSA als Standard; | <b>GeneID (NCBI):</b><br>3480                | <b>Empfohlene Verdünnungen:</b><br>WB 1:500-1:2000<br>IP 0.5-4.0 µg für IP und 1:200-1:1000 für WB<br>IHC 1:100-1:400 |
| <b>Wirt:</b><br>Kaninchen  | <b>Vollständiger Name:</b><br>IGF I receptor |   |
| <b>Isotyp:</b><br>IgG  | <b>Berechnete Masse:</b><br>155 kDa          |   |
|  | <b>Beobachtete Masse:</b><br>100 kDa         |   |

## Anwendungen

|   |  |
|---|--|
| <b>Geprüfte Anwendungen:</b><br>IHC, IP, WB, ELISA  | <b>Positivkontrollen:</b><br>WB: HeLa-Zellen, LO2-Zellen, MCF-7-Zellen<br>IP: HeLa-Zellen,<br>IHC: humanes Lungenkarzinomgewebe, |
| <b>In Publikationen genannte Anwendungen:</b><br>IF, IHC, IP, WB  |  |
| <b>Getestete Reaktivität:</b><br>Human, Maus, Ratte   |  |
| <b>Zitierte Arten:</b><br>Hausschwein, Human, Maus, Ratte   |  |
| <b>Hinweis-IHC: Antigenmaskierung mit TE-Puffer pH 9,0 empfohlen. (*) Wahlweise kann die Antigenmaskierung auch mit Citratpuffer pH 6,0 erfolgen.</b> |  |

## Hintergrundinformationen

IGF1R, also named as CD221, is a receptor tyrosine kinase which mediates actions of INS-like growth factor 1 (IGF1). IGF1R binds IGF1 with high affinity and IGF2 and INS with a lower affinity, the activated IGF1R is involved in cell growth and survival control. It is crucial for tumor transformation and survival of malignant cell. IGF1R is a heterotetrameric receptor, composed of two alpha subunits (130 kDa each) and two beta subunits (~98 kDa each) (PMID: 6279656). Both the alpha and beta subunits are synthesized from a single mRNA precursor. The precursor is then glycosylated, proteolytically cleaved, and crosslinked by cysteine bonds. This antibody raised against a synthesized polypeptide (CGVLVLRASFDERQPYAH) corresponding to 1332-1348aa of human IGF1R protein recognizes beta subunit of IGF1R.

## Bemerkenswerte Veröffentlichungen

| Verfasser   | Pubmed ID | Journal                    | Anwendung |
|-------------|-----------|----------------------------|-----------|
| YanHua Fan  | 36174847  | Fitoterapia                | WB        |
| Kuanyu Wang | 31807171  | Oncol Lett                 | WB        |
| Zhanxia Li  | 30454699  | Biochem Biophys Res Commun | WB        |

## Lagerung

**Lagerungsbedingungen:**  
Bei -20°C lagern. Nach dem Versand ein Jahr lang stabil

**Lagerungspuffer:**  
PBS mit 0.02% Natriumazid und 50% Glycerin pH 7.3.

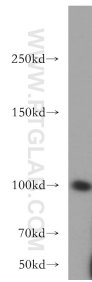
Aliquotieren ist nicht notwendig bei -20°C Lagerung

\*\*\* 20ul-Größen enthalten 0.1% BSA

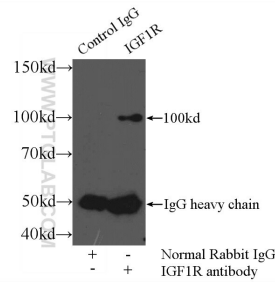
For technical support and original validation data for this product please contact:  
T: 1 (888) 4PTGLAB (1-888-478-4522) (toll free in USA), or 1(312) 455-8498 (outside USA)  
E: proteintech@ptglab.com  
W: ptglab.com

This product is exclusively available under Proteintech Group brand and is not available to purchase from any other manufacturer.

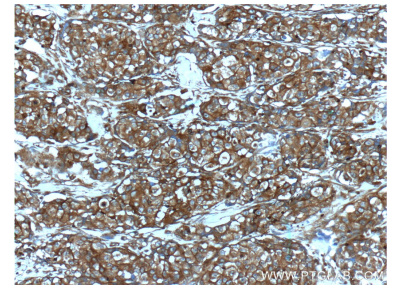
## Ausgewählte Validierungsdaten



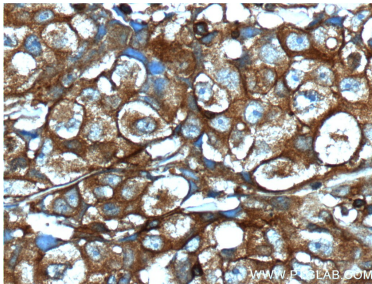
HeLa cells were subjected to SDS PAGE followed by western blot with 20254-1-AP (IGF1R beta chain antibody) at dilution of 1:400 incubated at room temperature for 1.5 hours.



IP Result of anti-IGF1R beta chain (IP:20254-1-AP, 4ug; Detection:20254-1-AP 1:300) with HeLa cells lysate 2400ug.



Immunohistochemical analysis of paraffin-embedded human lung cancer tissue slide using 20254-1-AP (IGF1R beta chain antibody at dilution of 1:200 (under 10x lens).



Immunohistochemical analysis of paraffin-embedded human lung cancer tissue slide using 20254-1-AP (IGF1R beta chain antibody at dilution of 1:200 (under 40x lens).