

Nur für Forschungszwecke

LATS2-Specific Polyklonaler Antikörper



Katalog-Nr.: 20276-1-AP

Vorgestelltes Produkt

24 Publikationen

Allgemeine Informationen

Katalog-Nr.:

20276-1-AP

Größe:

150ul, Konzentration: 400 µg/ml von Nanodrop;

Wirt:

Kaninchen

Isotyp:

IgG

GenBank-Zugangsnummer:

NM_014572

GeneID (NCBI):

26524

Vollständiger Name:

LATS, large tumor suppressor, homolog 2 (Drosophila)

Berechnete Masse:

120 kDa

Beobachtete Masse:

130-150 kDa

Reinigungsmethode:

Antigen-Affinitätsreinigung

Empfohlene Verdünnungen:

WB 1:500-1:2000

IP 0.5-4.0 µg für IP und 1:200-1:1000 für WB

IHC 1:50-1:500

IF 1:20-1:200

Anwendungen

Geprüfte Anwendungen:

FC, IF, IHC, IP, WB, ELISA

In Publikationen genannte Anwendungen:

CoIP, IF, IHC, WB

Getestete Reaktivität:

Human, Maus

Zitierte Arten:

Human, Maus

Positivkontrollen:

WB : SGC-7901-Zellen, humanes Herzgewebe, Maushirngewebe

IP : HEK-293-Zellen,

IHC : humanes Leberkarzinomgewebe, humanes Kolongewebe, Maus-Skelettmuskelgewebe

IF : HepG2-Zellen,

Hinweis-IHC: Antigendemaskierung mit TE-Puffer pH 9,0 empfohlen. (*) Wahlweise kann die Antigendemaskierung auch mit Citratpuffer pH 6,0 erfolgen.

Hintergrundinformationen

LATS2, also named as KPM, belongs to the protein kinase superfamily and AGC Ser/Thr protein kinase family. LATS2 is a tumor suppressor which plays a critical role in centrosome duplication, maintenance of mitotic fidelity and genomic stability. It negatively regulates G1/S transition by down-regulating cyclin E/CDK2 kinase activity. It is a negative regulator of the androgen receptor. LATS2 has a calculated molecular mass of 120 kDa and an apparent molecular mass of 150 kDa (PMID: 10871863). The antibody is specific to LATS2.

Bemerkenswerte Veröffentlichungen

Verfasser	Pubmed ID	Journal	Anwendung
Xin Wang	34544426	J Transl Med	WB, IHC
Minqi Zhu	36118851	Front Genet	IHC
Yandong Zhang	31731517	Molecules	WB

Lagerung

Lagerungsbedingungen:

Bei -20°C lagern. Nach dem Versand ein Jahr lang stabil

Lagerungspuffer:

PBS mit 0.02% Natriumazid und 50% Glycerin pH 7.3.

Aliquotieren ist nicht notwendig bei -20°C Lagerung

*** 20ul-Größen enthalten 0.1% BSA

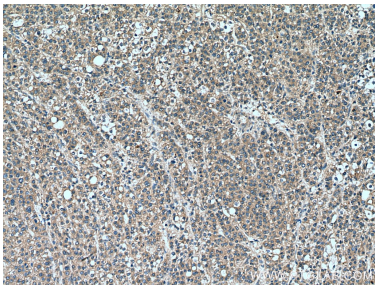
For technical support and original validation data for this product please contact:

T: 1 (888) 4PTGLAB (1-888-478-4522) (toll free in USA), or 1(312) 455-8498 (outside USA)

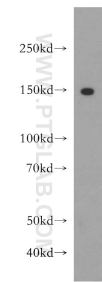
E: proteintech@ptglab.com
W: ptglab.com

This product is exclusively available under Proteintech Group brand and is not available to purchase from any other manufacturer.

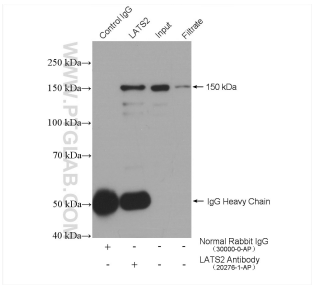
Ausgewählte Validierungsdaten



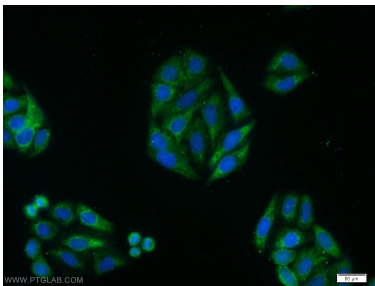
Immunohistochemical analysis of paraffin-embedded human liver cancer tissue slide using 20276-1-AP (LATS2-Specific antibody) at dilution of 1:200 (under 10x lens). Heat mediated antigen retrieval with Tris-EDTA buffer (pH 9.0).



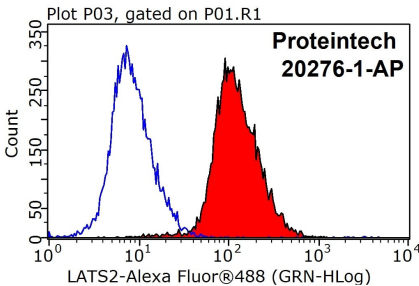
SGC-7901 cells were subjected to SDS PAGE followed by western blot with 20276-1-AP (LATS2-Specific antibody) at dilution of 1:500 incubated at room temperature for 1.5 hours.



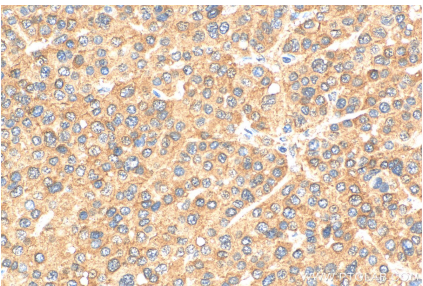
IP result of anti-LATS2-Specific (IP:20276-1-AP, 4ug; Detection:20276-1-AP 1:300) with HEK-293 cells lysate 2320 ug.



Immunofluorescent analysis of HepG2 cells using 20276-1-AP (LATS2-Specific antibody) at dilution of 1:50 and Alexa Fluor 488-conjugated AffiniPure Goat Anti-Rabbit IgG(H+L).



1X10⁶ HeLa cells were stained with 0.2ug LATS2-Specific antibody (20276-1-AP, red) and control antibody (blue). Fixed with 90% MeOH blocked with 3% BSA (30 min). Alexa Fluor 488-conjugated AffiniPure Goat Anti-Rabbit IgG(H+L) with dilution 1:1000.



Immunohistochemical analysis of paraffin-embedded human liver cancer tissue slide using 20276-1-AP (LATS2-Specific antibody) at dilution of 1:200 (under 40x lens). Heat mediated antigen retrieval with Tris-EDTA buffer (pH 9.0).