

Allgemeine Informationen

Katalog-Nr.: 20326-1-AP	GenBank-Zugangsnummer: BC026341	Reinigungsmethode: Antigen-Affinitätsreinigung
Größe: 150ul , Konzentration: 900 µg/ml von Nanodrop und 607 µg/ml durch die Bradford-Methode mit BSA als Standard;	GeneID (NCBI): 4208	Empfohlene Verdünnungen: WB 1:500-1:2000 IHC 1:20-1:200 IF 1:50-1:500
Wirt: Kaninchen	Vollständiger Name: myocyte enhancer factor 2C	
Isotyp: IgG	Berechnete Masse: 469 aa, 51 kDa	
Immunogen Katalognummer: AG13255	Beobachtete Masse: 65-68 kDa	

Anwendungen

Geprüfte Anwendungen: IF, IHC, WB, ELISA	Positivkontrollen:
Getestete Reaktivität: Human, Maus, Ratte	WB : HeLa-Zellen, Maus-Dünndarmgewebe, Maushodengewebe, Rattenlymphgewebe, SH-SY5Y- Zellen
Hinweis-IHC: Antigenmaskierung mit TE- Puffer pH 9,0 empfohlen. (*) Wahlweise kann die Antigenmaskierung auch mit Citratpuffer pH 6,0 erfolgen.	IHC : humanes Herzgewebe, IF : Maushirngewebe,

Hintergrundinformationen

MEF2C belongs to the MEF2 family. It is a transcription activator which binds specifically to the MEF2 element present in the regulatory regions of many muscle-specific genes. MEF2C controls cardiac morphogenesis and myogenesis, and is also involved in vascular development. It plays an essential role in hippocampal-dependent learning and memory by suppressing the number of excitatory synapses and thus regulating basal and evoked synaptic transmission. It is crucial for normal neuronal development, distribution, and electrical activity in the neocortex and is necessary for proper development of megakaryocytes and platelets and for bone marrow B lymphopoiesis. This protein is required for B-cell survival and proliferation in response to BCR stimulation, efficient IgG1 antibody responses to T-cell-dependent antigens and for normal induction of germinal center B cells. It may also be involved in neurogenesis and in the development of cortical architecture. This antibody is a rabbit polyclonal antibody raised against an internal 161Aa region of human MEF2C. Phosphorylation and acetylation may affect the molecular weight of protein, and 60-70kd was also been reported (PMID:28973134).

Lagerung

Lagerungsbedingungen:
Bei -20°C lagern. Nach dem Versand ein Jahr lang stabil

Lagerungspuffer:
PBS mit 0.02% Natriumazid und 50% Glycerin pH 7.3.

Aliquotieren ist nicht notwendig bei -20°C Lagerung

*** 20ul-Größen enthalten 0.1% BSA

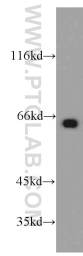
For technical support and original validation data for this product please contact:

T: 1 (888) 4PTGLAB (1-888-478-4522) (toll free
in USA), or 1(312) 455-8498 (outside USA)

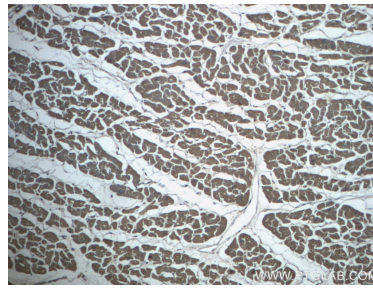
E: proteintech@ptglab.com
W: ptglab.com

This product is exclusively available under Proteintech Group brand and is not available to purchase from any other manufacturer.

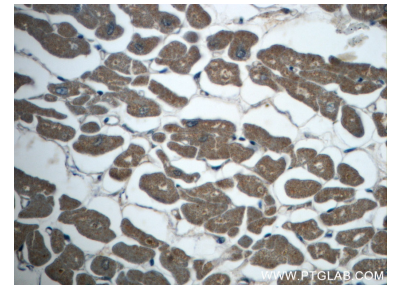
Ausgewählte Validierungsdaten



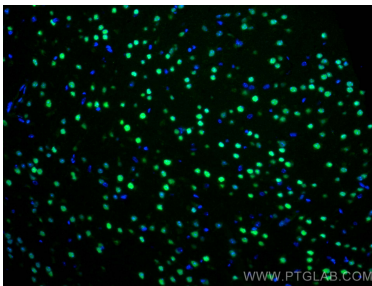
HeLa cells were subjected to SDS PAGE followed by western blot with 20326-1-AP (MEF2C antibody) at dilution of 1:500 incubated at room temperature for 1.5 hours.



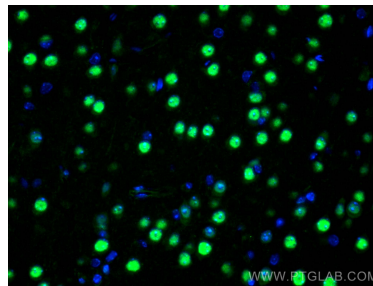
Immunohistochemical analysis of paraffin-embedded human heart slide using 20326-1-AP (MEF2C Antibody) at dilution of 1:50.



Immunohistochemical analysis of paraffin-embedded human heart slide using 20326-1-AP (MEF2C Antibody) at dilution of 1:50.



Immunofluorescent analysis of (4% PFA) fixed mouse brain tissue using MEF2C antibody (20326-1-AP) at dilution of 1:200 and CoraLite@488-Conjugated AffiniPure Goat Anti-Rabbit IgG(H+L).



Immunofluorescent analysis of (4% PFA) fixed mouse brain tissue using MEF2C antibody (20326-1-AP) at dilution of 1:200 and CoraLite@488-Conjugated AffiniPure Goat Anti-Rabbit IgG(H+L).