

Allgemeine Informationen

Katalog-Nr.: 20333-1-AP	GenBank-Zugangsnummer: BC022486	Reinigungsmethode: Antigen-Affinitätsreinigung
Größe: 150ul , Konzentration: 500 µg/ml von Nanodrop;	GeneID (NCBI): 358	Empfohlene Verdünnungen: WB 1:5000-1:50000 IP 0.5-4.0 ug für IP und 1:500-1:3000 für WB
Wirt: Kaninchen	Vollständiger Name: aquaporin 1 (Colton blood group)	IHC 1:250-1:1000 IF 1:50-1:500
Isotyp: IgG	Berechnete Masse: 269 aa, 29 kDa	
Immunogen Katalognummer: AG14093	Beobachtete Masse: 25-28 kDa, 40-45 kDa	

Anwendungen

Geprüfte Anwendungen:

IF, IHC, IP, WB, ELISA

In Publikationen genannte Anwendungen:

FC, IF, IHC, IP, WB

Getestete Reaktivität:

Human, Maus, Ratte

Zitierte Arten:

Hausschwein, Human, Hund, Maus, Ratte, Rind, Ziege

Hinweis-IHC: Antigenmaskierung mit TE-Puffer pH 9,0 empfohlen. (*) Wahlweise kann die Antigenmaskierung auch mit Citratpuffer pH 6,0 erfolgen.

Positivkontrollen:

WB: Maus-Skelettmuskelgewebe, humanes Herzgewebe

IP: Maus-Skelettmuskelgewebe,

IHC: humanes Mammakarzinomgewebe, humanes Nierengewebe

IF: humanes Mammakarzinomgewebe, Mausnierengewebe

Hintergrundinformationen

AQP1 is a member of aquaporins (AQPs) that are small membrane-spanning proteins facilitating water transport. AQP1 is expressed in most tissues in the mammalian body. Alterations of AQP1 expression have been linked to variety of diseases, including cancer. The predicted molecular weight of AQP1 is around 28 kDa, while highly glycosylated form can also be observed around 40-45 kDa. (1530176)

Bemerkenswerte Veröffentlichungen

Verfasser	Pubmed ID	Journal	Anwendung
Jianping Zhang	31572217	Front Physiol	WB,IHC
Haiyan Fu, Yuan	34622165	iScience	IF
Yi Song	36316968	Cell Prolif	IF

Lagerung

Lagerungsbedingungen:

Bei -20°C lagern. Nach dem Versand ein Jahr lang stabil

Lagerungspuffer:

PBS mit 0.02% Natriumazid und 50% Glycerin pH 7.3.

Aliquotieren ist nicht notwendig bei -20°C Lagerung

***** 20ul-Größen enthalten 0.1% BSA**

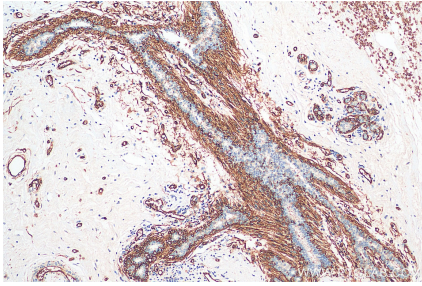
For technical support and original validation data for this product please contact:

T: 1 (888) 4PTGLAB (1-888-478-4522) (toll free in USA), or 1(312) 455-8498 (outside USA)

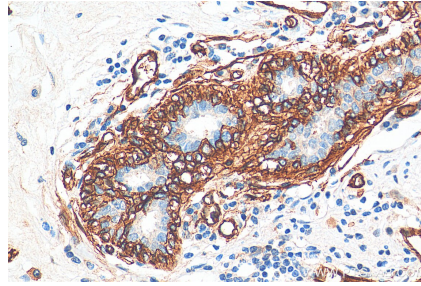
E: proteintech@ptglab.com
W: ptglab.com

This product is exclusively available under Proteintech Group brand and is not available to purchase from any other manufacturer.

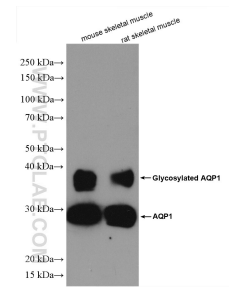
Ausgewählte Validierungsdaten



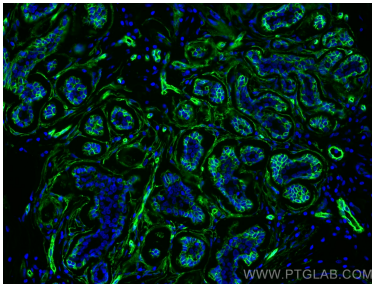
Immunohistochemical analysis of paraffin-embedded human breast cancer tissue slide using 20333-1-AP (AQP1 antibody) at dilution of 1:500 (under 10x lens). Heat mediated antigen retrieval with Tris-EDTA buffer (pH 9.0).



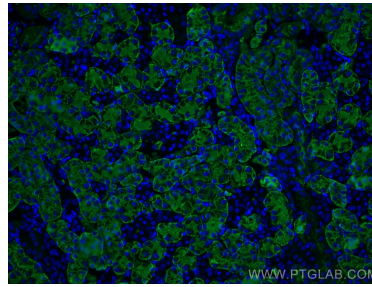
Immunohistochemical analysis of paraffin-embedded human breast cancer tissue slide using 20333-1-AP (AQP1 antibody) at dilution of 1:500 (under 40x lens). Heat mediated antigen retrieval with Tris-EDTA buffer (pH 9.0).



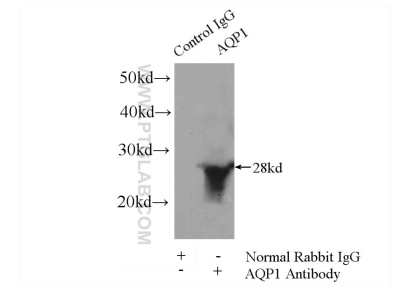
Various lysates were subjected to SDS PAGE followed by western blot with 20333-1-AP (AQP1 antibody) at dilution of 1:6000 incubated at room temperature for 1.5 hours.



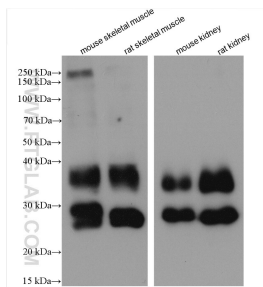
Immunofluorescent analysis of (4% PFA) fixed human breast cancer tissue using AQP1 antibody (20333-1-AP) at dilution of 1:200 and CoraLite@488-Conjugated AffiniPure Goat Anti-Rabbit IgG(H+L).



Immunofluorescent analysis of (4% PFA) fixed mouse kidney tissue using AQP1 antibody (20333-1-AP) at dilution of 1:200 and CoraLite@488-Conjugated AffiniPure Goat Anti-Rabbit IgG(H+L).



IP Result of anti-AQP1 (IP:20333-1-AP, 4ug; Detection:20333-1-AP 1:1500) with mouse skeletal muscle tissue lysate 3600ug.



Various lysates were subjected to SDS PAGE followed by western blot with 20333-1-AP (AQP1 antibody) at dilution of 1:10000 incubated at room temperature for 1.5 hours.