

Nur für Forschungszwecke

# ASCT2 Polyklonaler Antikörper

Katalog-Nr.: 20350-1-AP

Vorgestelltes Produkt

12 Publikationen



## Allgemeine Informationen

<b>Katalog-Nr.:</b> 20350-1-AP	<b>GenBank-Zugangsnummer:</b> BC000062	<b>Reinigungsmethode:</b> Antigen-Affinitätsreinigung
<b>Größe:</b> 150ul, Konzentration: 750 µg/ml von Nanodrop;	<b>GeneID (NCBI):</b> 6510	<b>Empfohlene Verdünnungen:</b> WB 1:2000-1:16000 IHC 1:400-1:1600 IF 1:50-1:500
<b>Wirt:</b> Kaninchen	<b>Vollständiger Name:</b> solute carrier family 1 (neutral amino acid transporter), member 5	
<b>Isotyp:</b> IgG	<b>Berechnete Masse:</b> 541 aa, 57 kDa	
<b>Immunogen Katalognummer:</b> AG14182	<b>Beobachtete Masse:</b> 70 kDa	

## Anwendungen

<b>Geprüfte Anwendungen:</b> IF, IHC, WB, ELISA	<b>Positivkontrollen:</b> WB: HeLa-Zellen, IHC: humanes Kolonkarzinomgewebe, humanes Magenkrebsgewebe IF: Maus-Dünndarmgewebe,
<b>In Publikationen genannte Anwendungen:</b> IF, IHC, WB	
<b>Getestete Reaktivität:</b> Human, Maus	
<b>Zitierte Arten:</b> Human, Maus	
<b>Hinweis-IHC: Antigendemaskierung mit TE-Puffer pH 9,0 empfohlen. (*) Wahlweise kann die Antigendemaskierung auch mit Citratpuffer pH 6,0 erfolgen.</b>	

## Hintergrundinformationen

### Bemerkenswerte Veröffentlichungen

Verfasser	Pubmed ID	Journal	Anwendung
Jun Inoue	33294587	Mol Ther Oncolytics	WB
Yan Hu	34726238	Biosci Rep	WB
Di Ye	34006301	J Exp Clin Cancer Res	WB

## Lagerung

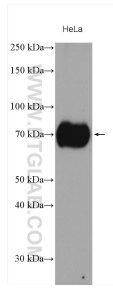
**Lagerungsbedingungen:**  
Bei -20°C lagern. Nach dem Versand ein Jahr lang stabil  
**Lagerungspuffer:**  
PBS mit 0.02% Natriumazid und 50% Glycerin pH 7.3.  
Aliquotieren ist nicht notwendig bei -20°C Lagerung

\*\*\* 20ul-Größen enthalten 0.1% BSA

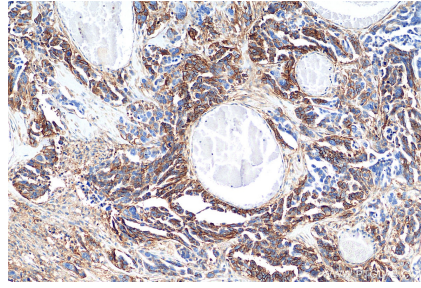
For technical support and original validation data for this product please contact:  
T: 1 (888) 4PTGLAB (1-888-478-4522) (toll free in USA), or 1(312) 455-8498 (outside USA)  
E: proteintech@ptglab.com  
W: ptglab.com

This product is exclusively available under Proteintech Group brand and is not available to purchase from any other manufacturer.

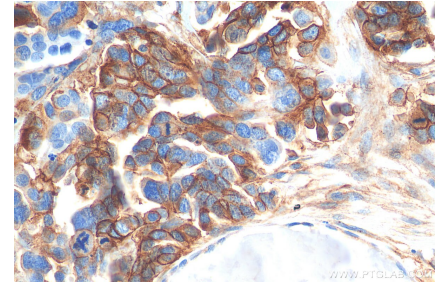
## Ausgewählte Validierungsdaten



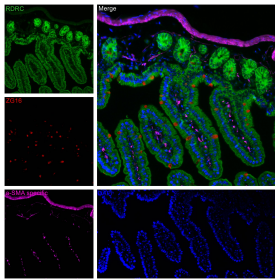
HeLa cells were subjected to SDS PAGE followed by western blot with 20350-1-AP (ASCT2 antibody) at dilution of 1:8000 incubated at room temperature for 1.5 hours.



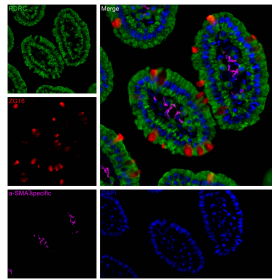
Immunohistochemical analysis of paraffin-embedded human colon cancer tissue slide using 20350-1-AP (ASCT2 antibody) at dilution of 1:800 (under 10x lens). Heat mediated antigen retrieval with Tris-EDTA buffer (pH 9.0).



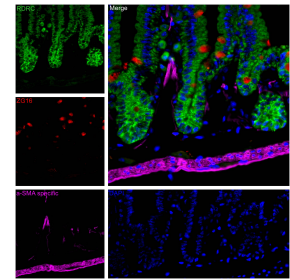
Immunohistochemical analysis of paraffin-embedded human colon cancer tissue slide using 20350-1-AP (ASCT2 antibody) at dilution of 1:800 (under 40x lens). Heat mediated antigen retrieval with Tris-EDTA buffer (pH 9.0).



Immunofluorescent analysis of (4% PFA) fixed mouse small intestine tissue using ASCT2 antibody (20350-1-AP) at dilution of 1:200 and CoraLite®488-Conjugated AffiniPure Goat Anti-Rabbit IgG(H+L), ZG16 antibody (67389-1-Ig, Clone: 1A7B9, red), CoraLite®594 smooth muscle actin specific antibody (CL594-80008, Clone: 5H7, Magenta).



Immunofluorescent analysis of (4% PFA) fixed mouse small intestine tissue using ASCT2 antibody (20350-1-AP) at dilution of 1:200 and CoraLite®488-Conjugated AffiniPure Goat Anti-Rabbit IgG(H+L), ZG16 antibody (67389-1-Ig, Clone: 1A7B9, red), CoraLite®594 smooth muscle actin specific antibody (CL594-80008, Clone: 5H7, Magenta).



Immunofluorescent analysis of (4% PFA) fixed mouse small intestine tissue using ASCT2 antibody (20350-1-AP) at dilution of 1:200 and CoraLite®488-Conjugated AffiniPure Goat Anti-Rabbit IgG(H+L), ZG16 antibody (67389-1-Ig, Clone: 1A7B9, red), CoraLite®594 smooth muscle actin specific antibody (CL594-80008, Clone: 5H7, Magenta).