

Nur für Forschungszwecke

# RBAP48 Polyklonaler Antikörper

Katalog-Nr.: 20364-1-AP

Vorgestelltes Produkt

10 Publikationen



## Allgemeine Informationen

Katalog-Nr.:  
20364-1-AP

Größe:  
150ul, Konzentration: 700 µg/ml von  
Nanodrop;

Wirt:  
Kaninchen

Isotyp:  
IgG

GenBank-Zugangsnummer:  
NM\_005610

GeneID (NCBI):  
5928

Vollständiger Name:  
retinoblastoma binding protein 4

Berechnete Masse:  
48 kDa

Beobachtete Masse:  
48-50 kDa

Reinigungsmethode:

Antigen-Affinitätsreinigung

Empfohlene Verdünnungen:

WB 1:1000-1:6000

IP 0.5-4.0 µg für IP und 1:500-1:2000  
für WB

IHC 1:20-1:200

IF 1:50-1:500

## Anwendungen

Geprüfte Anwendungen:

IF, IHC, IP, WB, ELISA

In Publikationen genannte Anwendungen:

IHC, IP, WB

Getestete Reaktivität:

Human, Maus

Zitierte Arten:

Human, Maus

**Hinweis-IHC: Antigendemaskierung mit TE-Puffer pH 9,0 empfohlen. (\*) Wahlweise kann die Antigendemaskierung auch mit Citratpuffer pH 6,0 erfolgen.**

Positivkontrollen:

WB: A431-Zellen, HEK-293-Zellen, HeLa-Zellen, HepG2-Zellen, humanes Hirngewebe, Jurkat-Zellen, K-562-Zellen, L02-Zellen, Maushirngewebe, SH-SY5Y-Zellen

IP: HeLa-Zellen,

IHC: humanes Zervixkarzinomgewebe, humanes Mammakarzinomgewebe

IF: HeLa-Zellen,

## Hintergrundinformationen

RBBP4, also named as RBAP48 and CAF-I p48, belongs to the WD repeat RBAP46/RBAP48/MSI1 family. RBBP4 is a core histone-binding subunit that may target chromatin assembly factors, chromatin remodeling factors and histone deacetylases to their histone substrates in a manner that is regulated by nucleosomal DNA. It is a component of several complexes which regulate chromatin metabolism. The antibody is specific to RBBP4.

## Bemerkenswerte Veröffentlichungen

Verfasser	Pubmed ID	Journal	Anwendung
Pingping Zhu	30224759	Nat Cell Biol	WB
Pingping Zhu	26426078	J Clin Invest	WB, IHC
Orhi Barroso-Gomila	34795231	Nat Commun	WB

## Lagerung

Lagerungsbedingungen:

Bei -20°C lagern. Nach dem Versand ein Jahr lang stabil

Lagerungspuffer:

PBS mit 0.02% Natriumazid und 50% Glycerin pH 7.3.

Aliquotieren ist nicht notwendig bei -20°C Lagerung

\*\*\* 20ul-Größen enthalten 0.1% BSA

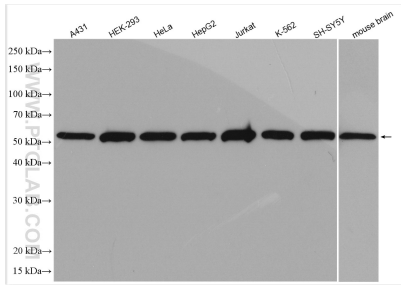
For technical support and original validation data for this product please contact:

T: 1 (888) 4PTGLAB (1-888-478-4522) (toll free in USA), or 1(312) 455-8498 (outside USA)

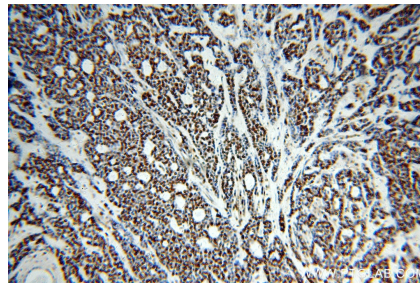
E: proteintech@ptglab.com  
W: ptglab.com

This product is exclusively available under Proteintech Group brand and is not available to purchase from any other manufacturer.

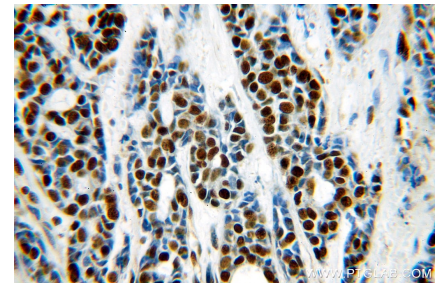
## Ausgewählte Validierungsdaten



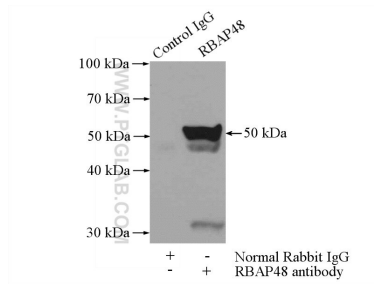
Various lysates were subjected to SDS PAGE followed by western blot with 20364-1-AP (RBAP48 antibody) at dilution of 1:3000 incubated at room temperature for 1.5 hours.



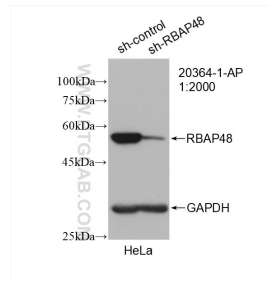
Immunohistochemical analysis of paraffin-embedded human cervical cancer using 20364-1-AP (RBAP48 antibody) at dilution of 1:100 (under 10x lens).



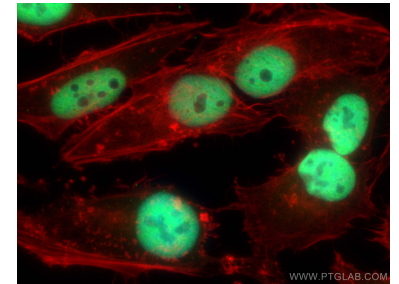
Immunohistochemical analysis of paraffin-embedded human cervical cancer using 20364-1-AP (RBAP48 antibody) at dilution of 1:100 (under 40x lens).



IP Result of anti-RBAP48 (IP:20364-1-AP, 4ug; Detection:20364-1-AP 1:1000) with HeLa cells lysate 2000ug.



WB result of RBAP48 antibody (20364-1-AP; 1:2000; incubated at room temperature for 1.5 hours) with sh-Control and sh-RBAP48 transfected HeLa cells.



Immunofluorescent analysis of (4% PFA) fixed HeLa cells using RBAP48 antibody (20364-1-AP) at dilution of 1:200 and CoraLite@488-Conjugated AffiniPure Goat Anti-Rabbit IgG(H+L), CL594-Phalloidin (red).