

Nur für Forschungszwecke

MIF Polyklonaler Antikörper

Katalog-Nr.: 20415-1-AP

Vorgestelltes Produkt

10 Publikationen



Allgemeine Informationen

Katalog-Nr.:

20415-1-AP

Größe:

150ul, Konzentration: 500 µg/ml von Nanodrop;

Wirt:

Kaninchen

Isotyp:

IgG

Immunogen Katalognummer:

AG14058

GenBank-Zugangsnummer:

BC000447

GeneID (NCBI):

4282

Vollständiger Name:

macrophage migration inhibitory factor (glycosylation-inhibiting factor)

Berechnete Masse:

115 aa, 12 kDa

Beobachtete Masse:

12 kDa

Reinigungsmethode:

Antigen-Affinitätsreinigung

Empfohlene Verdünnungen:

WB 1:500-1:2000

IP 0.5-4.0 µg für IP und 1:500-1:2000 für WB

IF 1:50-1:500

Anwendungen

Geprüfte Anwendungen:

FC, IF, IP, WB, ELISA

In Publikationen genannte Anwendungen:

IF, WB

Getestete Reaktivität:

Human, Maus, Ratte

Zitierte Arten:

Human, Maus, Ratte

Positivkontrollen:

WB: A549-Zellen, HEK-293T-Zellen, HL-60-Zellen, HUVEC-Zellen, Jurkat-Zellen, Rattenmilzgewebe, U-87 MG-Zellen, U-937-Zellen, Y79-Zellen

IP: Mausmilzgewebe,

IF: U-251-Zellen,

Hintergrundinformationen

MIF is a pleiotropic cytokine that contributes to the pathogenesis of many autoimmune diseases through its upstream immunoregulatory function and its polymorphic genetic locus. MIF is a highly conserved protein of 12.5 kDa, with evolutionarily ancient homologues in plants, protozoans, nematodes, and invertebrates.

Bemerkenswerte Veröffentlichungen

Verfasser	Pubmed ID	Journal	Anwendung
Rui-Min Liu	29079416	Cancer Lett	WB,IHC
Langdong Chen	27754507	Mol Biosyst	
Xing Guo	29113309	Oncotarget	WB,IHC

Lagerung

Lagerungsbedingungen:

Bei -20°C lagern. Nach dem Versand ein Jahr lang stabil

Lagerungspuffer:

PBS mit 0.02% Natriumazid und 50% Glycerin pH 7.3.

Aliquotieren ist nicht notwendig bei -20°C Lagerung

*** 20ul-Größen enthalten 0.1% BSA

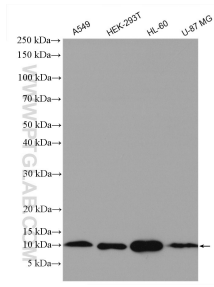
For technical support and original validation data for this product please contact:

T: 1 (888) 4PTGLAB (1-888-478-4522) (toll free in USA), or 1(312) 455-8498 (outside USA)

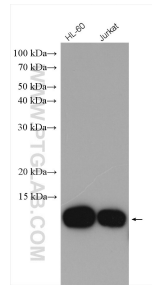
E: proteintech@ptglab.com
W: ptglab.com

This product is exclusively available under Proteintech Group brand and is not available to purchase from any other manufacturer.

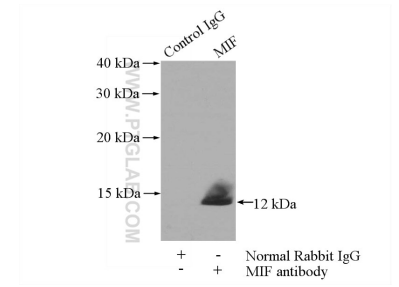
Ausgewählte Validierungsdaten



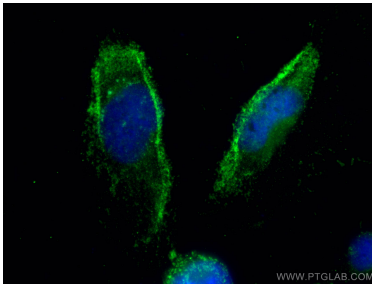
Various lysates were subjected to SDS PAGE followed by western blot with 20415-1-AP (MIF antibody) at dilution of 1:1000 incubated at room temperature for 1.5 hours.



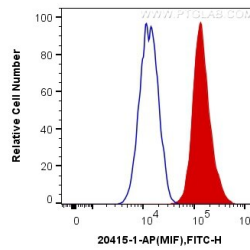
Various lysates were subjected to SDS PAGE followed by western blot with 20415-1-AP (MIF antibody) at dilution of 1:1000 incubated at room temperature for 1.5 hours.



IP Result of anti-MIF (IP:20415-1-AP, 4ug; Detection:20415-1-AP 1:1.000) with mouse spleen tissue lysate 4000ug.



Immunofluorescent analysis of (-20°C Ethanol) fixed U-251 cells using MIF antibody (20415-1-AP) at dilution of 1:200 and CoraLite®488-Conjugated AffiniPure Goat Anti-Rabbit IgG(H+L).



1X10⁶ THP-1 cells were intracellularly stained with 0.4 ug Anti-Human MIF (20415-1-AP) and CoraLite®488-Conjugated AffiniPure Goat Anti-Rabbit IgG(H+L) at dilution 1:1000 (red), or 0.4 ug Control Antibody. Cells were fixed with 4% PFA and permeabilized with Flow Cytometry Perm Buffer (PF00011-C).