

Nur für Forschungszwecke

EDG2 Polyklonaler Antikörper

Katalog-Nr.: 20442-1-AP

1 Publikationen



Allgemeine Informationen

Katalog-Nr.: 20442-1-AP	GenBank-Zugangsnummer: BC030615	Reinigungsmethode: Antigen-Affinitätsreinigung
Größe: 150ul, Konzentration: 700 µg/ml von Nanodrop;	GeneID (NCBI): 1902	Empfohlene Verdünnungen: WB 1:300-1:1000 IHC 1:50-1:500
Wirt: Kaninchen	Vollständiger Name: lysophosphatidic acid receptor 1	
Isotyp: IgG	Berechnete Masse: 364 aa, 41 kDa	
Immunogen Katalognummer: AG14253	Beobachtete Masse: 41-50 kDa	

Anwendungen

Geprüfte Anwendungen: IHC, WB, ELISA	Positivkontrollen: WB : Jurkat-Zellen, A2780-Zellen, A375-Zellen, A549-Zellen, HeLa-Zellen, Maushirngewebe, Multizellen/-gewebe, NIH3T3-Zellen
In Publikationen genannte Anwendungen: WB	IHC : humanes Hirngewebe, Maushirngewebe
Getestete Reaktivität: Human, Maus	
Zitierte Arten: Human	

Hinweis-IHC: Antigenmaskierung mit TE-Puffer pH 9,0 empfohlen. (*) Wahlweise kann die Antigenmaskierung auch mit Citratpuffer pH 6,0 erfolgen.

Hintergrundinformationen

EDG2 (also known as LPA1) is a G-protein coupled receptor for lysophosphatidic acid (LPA), a potent motility inducing factor, which is a major component of serum (PMID: 19415462). EDG2 is widely expressed in normal tissue during growth and development. In the context of cancer, several studies have suggested that EDG2 expression in tumors is often similar to that shown in normal tissue (PMID: 17496233).

Bemerkenswerte Veröffentlichungen

Verfasser	Pubmed ID	Journal	Anwendung
Junting Cai	28348461	Mediators Inflamm	WB

Lagerung

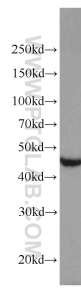
Lagerungsbedingungen:
Bei -20°C lagern. Nach dem Versand ein Jahr lang stabil
Lagerungspuffer:
PBS mit 0.02% Natriumazid und 50% Glycerin pH 7.3.
Aliquotieren ist nicht notwendig bei -20°C Lagerung

*** 20ul-Größen enthalten 0.1% BSA

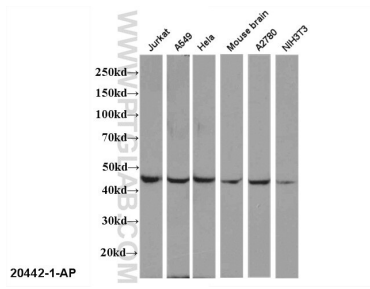
For technical support and original validation data for this product please contact:
T: 1 (888) 4PTGLAB (1-888-478-4522) (toll free in USA), or 1(312) 455-8498 (outside USA)
E: proteintech@ptglab.com
W: ptglab.com

This product is exclusively available under Proteintech Group brand and is not available to purchase from any other manufacturer.

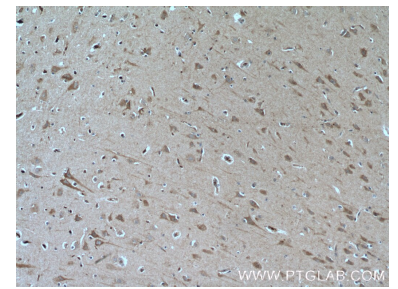
Ausgewählte Validierungsdaten



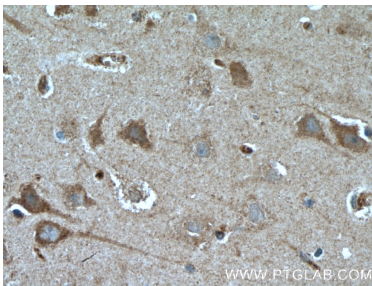
Jurkat cells were subjected to SDS PAGE followed by western blot with 20442-1-AP (EDG2 antibody) at dilution of 1:1000 incubated at room temperature for 1.5 hours.



Multi-cells/tissue were subjected to SDS PAGE followed by western blot with 20442-1-AP (EDG2 antibody) at dilution of 1:1000 incubated at room temperature for 1.5 hours.



Immunohistochemical analysis of paraffin-embedded human brain tissue slide using 20442-1-AP (LPAR1, EDG2 Antibody) at dilution of 1:100 (under 10x lens). Heat mediated antigen retrieval with Tris-EDTA buffer (pH 9.0).



Immunohistochemical analysis of paraffin-embedded human brain tissue slide using 20442-1-AP (LPAR1, EDG2 Antibody) at dilution of 1:100 (under 40x lens). Heat mediated antigen retrieval with Tris-EDTA buffer (pH 9.0).