

Allgemeine Informationen

Katalog-Nr.:
20451-1-AP

Größe:
150ul, Konzentration: 350 µg/ml von
Nanodrop und 307 µg/ml durch die
Bradford-Methode mit BSA als
Standard;

Wirt:
Kaninchen

Isotyp:
IgG

Immunogen Katalognummer:
AG14333

GenBank-Zugangsnummer:
BC000908

GeneID (NCBI):
6607

Vollständiger Name:
survival of motor neuron 2,
centromeric

Berechnete Masse:
282 aa, 30 kDa

Beobachtete Masse:
38 kDa

Reinigungsmethode:

Antigen-Affinitätsreinigung

Empfohlene Verdünnungen:

WB 1:500-1:3000
IP 0.5-4.0 µg für IP und 1:200-1:1000
für WB
IHC 1:50-1:200
IF 1:400-1:1600

Anwendungen

Geprüfte Anwendungen:

IF, IHC, IP, WB, ELISA

Getestete Reaktivität:

Human, Maus

Hinweis-IHC: Antigendemaskierung mit TE-Puffer pH 9,0 empfohlen. (*) Wahlweise kann die Antigendemaskierung auch mit Citratpuffer pH 6,0 erfolgen.

Positivkontrollen:

WB: HEK-293-Zellen, HeLa-Zellen, HepG2-Zellen,
Jurkat-Zellen, K-562-Zellen

IP: HEK-293-Zellen,

IHC: humanes Nierengewebe, humanes Herzgewebe

IF: HepG2-Zellen,

Hintergrundinformationen

Spinal muscular atrophy (SMA) is an autosomal recessive neurodegenerative disease characterized by loss of anterior horn cells in the spinal cord and concomitant symmetrical muscle weakness and atrophy (PMID: 16364894). SMA is caused by deletion or mutations of the survival motor neuron (SMN1) gene. SMA patients lack a functional SMN1 gene, but they possess an intact SMN2 gene, which though nearly identical to SMN1, is only partially functional (PMID: 17355180). A large majority of SMN2 transcripts lack exon 7, resulting in production of a truncated, less stable SMN protein (PMID: 10369862). The level of SMN protein correlates with phenotypic severity of SMA.

Lagerung

Lagerungsbedingungen:

Bei -20°C lagern. Nach dem Versand ein Jahr lang stabil

Lagerungspuffer:

PBS mit 0.02% Natriumazid und 50% Glycerin pH 7.3.

Aliquotieren ist nicht notwendig bei -20°C Lagerung

*** 20ul-Größen enthalten 0.1% BSA

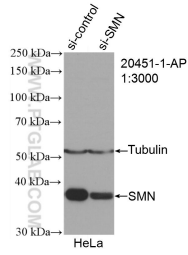
For technical support and original validation data for this product please contact:

T: 1 (888) 4PTGLAB (1-888-478-4522) (toll free
in USA), or 1(312) 455-8498 (outside USA)

E: proteintech@ptglab.com
W: ptglab.com

This product is exclusively available under Proteintech Group brand and is not available to purchase from any other manufacturer.

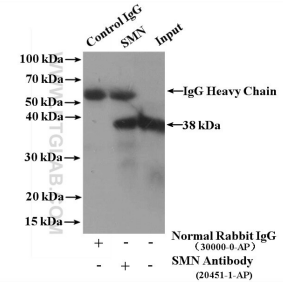
Ausgewählte Validierungsdaten



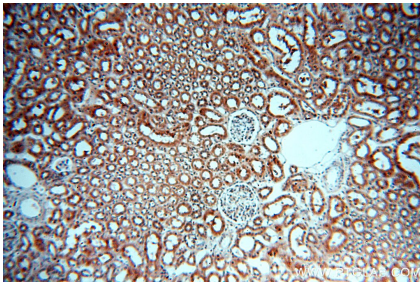
WB result of SMN antibody (20451-1-AP; 1:3000; incubated at room temperature for 1.5 hours) with sh-Control and sh-SMN transfected HeLa cells.



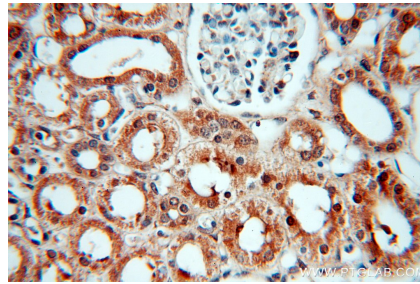
HEK-293 cells were subjected to SDS PAGE followed by western blot with 20451-1-AP (SMN antibody) at dilution of 1:800 incubated at room temperature for 1.5 hours.



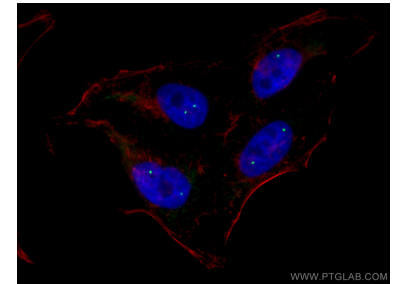
IP result of anti-SMN (IP:20451-1-AP, 4ug; Detection:20451-1-AP 1:300) with HEK-293 cells lysate 2000 ug.



Immunohistochemical analysis of paraffin-embedded human kidney using 20451-1-AP (SMN antibody) at dilution of 1:100 (under 10x lens).



Immunohistochemical analysis of paraffin-embedded human kidney using 20451-1-AP (SMN antibody) at dilution of 1:100 (under 40x lens).



Immunofluorescent analysis of (4% PFA) fixed HepG2 cells using SMN antibody (20451-1-AP) at dilution of 1:800 and CoraLite@488-Conjugated AffiniPure Goat Anti-Rabbit IgG(H+L), CL594-Phalloidin (red).