

Nur für Forschungszwecke

SLC37A2 Polyklonaler Antikörper

Katalog-Nr.:20469-1-AP



Allgemeine Informationen

Katalog-Nr.:
20469-1-AP

Größe:

150ul , Konzentration: 200 µg/ml von Nanodrop und 133 µg/ml durch die Bradford-Methode mit BSA als Standard;

Wirt:

Kaninchen

Isotyp:

IgG

Immunogen Katalognummer:

AG14306

GenBank-Zugangsnummer:

BC051314

GeneID (NCBI):

219855

Vollständiger Name:

solute carrier family 37 (glycerol-3-phosphate transporter), member 2

Berechnete Masse:

505 aa, 55 kDa

Beobachtete Masse:

50-75 kDa

Reinigungsmethode:

Antigen-Affinitätsreinigung

Empfohlene Verdünnungen:

WB 1:300-1:600

Anwendungen

Geprüfte Anwendungen:

WB, ELISA

Getestete Reaktivität:

Human, Maus, Ratte

Positivkontrollen:

WB : Maus-Thymusgewebe, HeLa-Zellen, Mausmilzgewebe, Ratten-Thymusgewebe, RAW 264.7-Zellen

Hintergrundinformationen

The solute carrier family 37 (SLC37) consists of four sugar-phosphate exchangers, A1, A2, A3, and A4, which are anchored in the endoplasmic reticulum (ER) membrane (PMID:23506893). Solute Carrier Family 37 Member 2 (SLC37A2), also known as SPX2, was first identified in a work, conducted on mice and aimed to detect cAMP inducible genes playing a role in promoting cholesterol efflux from the macrophage cell line RAW264 via apoE and apoA1 (PMID:11004510). Interestingly, of the four SLC37A members, SLC37A2 displays the highest level of transcript abundance in neutrophils and macrophages, indicating that SLC37A2 may play an essential role in regulating innate immune function (PMID:32428862).

Lagerung

Lagerungsbedingungen:

Bei -20°C lagern. Nach dem Versand ein Jahr lang stabil

Lagerungspuffer:

PBS mit 0.02% Natriumazid und 50% Glycerin pH 7.3.

Aliquotieren ist nicht notwendig bei -20°C Lagerung

***** 20ul-Größen enthalten 0.1% BSA**

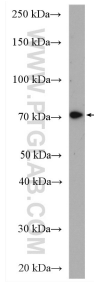
For technical support and original validation data for this product please contact:

T: 1 (888) 4PTGLAB (1-888-478-4522) (toll free in USA), or 1(312) 455-8498 (outside USA)

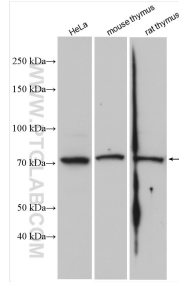
E: proteintech@ptglab.com
W: ptglab.com

This product is exclusively available under Proteintech Group brand and is not available to purchase from any other manufacturer.

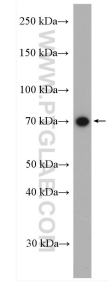
Ausgewählte Validierungsdaten



mouse thymus tissue were subjected to SDS PAGE followed by western blot with 20469-1-AP (SLC37A2 antibody) at dilution of 1:500 incubated at room temperature for 1.5 hours.



Various lysates were subjected to SDS PAGE followed by western blot with 20469-1-AP (SLC37A2 antibody) at dilution of 1:1500 incubated at room temperature for 1.5 hours.



mouse spleen tissue were subjected to SDS PAGE followed by western blot with 20469-1-AP (SLC37A2 antibody) at dilution of 1:500 incubated at room temperature for 1.5 hours.