

Nur für Forschungszwecke

IL-20RB Polyklonaler Antikörper

Katalog-Nr.:20521-1-AP



Allgemeine Informationen

Katalog-Nr.: 20521-1-AP	GenBank-Zugangsnummer: BC033292	Reinigungsmethode: Antigen-Affinitätsreinigung
Größe: 150ul, Konzentration: 450 µg/ml von Nanodrop und 267 µg/ml durch die Bradford-Methode mit BSA als Standard;	GeneID (NCBI): 53833	Empfohlene Verdünnungen: WB 1:500-1:2400 IF 1:10-1:100
Wirt: Kaninchen	Vollständiger Name: interleukin 20 receptor beta	
Isotyp: IgG	Berechnete Masse: 311 aa, 35 kDa	
Immunogen Katalognummer: AG14368	Beobachtete Masse: 45 kDa, 66-70 kDa	

Anwendungen

Geprüfte Anwendungen: FC, IF, WB, ELISA	Positivkontrollen:
Getestete Reaktivität: Human	WB: MCF7 cells, Apoptotisierte HeLa-Zellen, HeLa-Zellen, K-562-Zellen
	IF: HepG2-Zellen,

Hintergrundinformationen

Interleukin-20 receptor subunit beta (IL20RB) is a single-pass type I membrane protein of the type II cytokine receptor family. The interleukin-20-receptor I complex (IL-20-RI) is composed of two chains, IL20RA and IL20RB. IL-20-RI is a receptor for IL-19, IL-20 and IL-24. IL20RB can also form a heterodimer with IL22RA1. The IL22RA1/IL20RB dimer is a receptor for IL20 and IL24.

Lagerung

Lagerungsbedingungen:
Bei -20°C lagern. Nach dem Versand ein Jahr lang stabil

Lagerungspuffer:
PBS mit 0.02% Natriumazid und 50% Glycerin pH 7.3.

Aliquotieren ist nicht notwendig bei -20°C Lagerung

*** 20ul-Größen enthalten 0.1% BSA

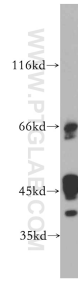
For technical support and original validation data for this product please contact:

T: 1 (888) 4PTGLAB (1-888-478-4522) (toll free
in USA), or 1(312) 455-8498 (outside USA)

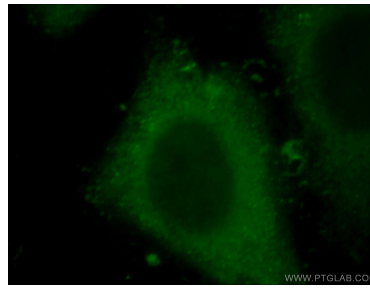
E: proteintech@ptglab.com
W: ptglab.com

This product is exclusively available under Proteintech Group brand and is not available to purchase from any other manufacturer.

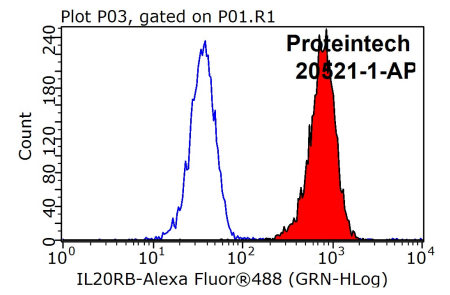
Ausgewählte Validierungsdaten



MCF7 cells were subjected to SDS PAGE followed by western blot with 20521-1-AP (IL20RB antibody) at dilution of 1:500 incubated at room temperature for 1.5 hours.



Immunofluorescent analysis of HepG2 cells, using IL20RB antibody 20521-1-AP at 1:25 dilution and FITC- labeled goat anti-Rabbit IgG (green).



1X10⁶ K-562 cells were stained with 0.2ug IL20RB antibody (20521-1-AP, red) and control antibody (blue). Fixed with 90% MeOH blocked with 3% BSA (30 min). Alexa Fluor 488-conjugated AffiniPure Goat Anti-Rabbit IgG(H+L) with dilution 1:1000.