

Nur für Forschungszwecke

Beta Actin Polyklonaler Antikörper

Katalog-Nr.:20536-1-AP

Vorgestelltes Produkt

2581 Publikationen



Allgemeine Informationen

Katalog-Nr.: 20536-1-AP	GenBank-Zugangsnummer: BC002409	Reinigungsmethode: Antigen-Affinitätsreinigung
Größe: 150ul , Konzentration: 600 µg/ml von Nanodrop;	GeneID (NCBI): 60	Empfohlene Verdünnungen: WB 1:1000-1:5000 IHC 1:50-1:500 IF 1:200-1:800
Wirt: Kaninchen	Vollständiger Name: actin, beta	
Isotyp: IgG	Berechnete Masse: 375 aa, 42 kDa	
Immunogen Katalognummer: AG14521	Beobachtete Masse: 42 kDa	

Anwendungen

Geprüfte Anwendungen:

FC, IF, IHC, WB, ELISA

In Publikationen genannte Anwendungen:

Cell treatment, CoIP, IF, IHC, IP, WB

Getestete Reaktivität:

Affe, Human, Hund, Maus, Ratte

Zitierte Arten:

Ente, Fisch, Hamster, Huhn, Hund, Rind, Ziege, Zackenbarsch

Hinweis-IHC: Antigenmaskierung mit TE-Puffer pH 9,0 empfohlen. (*) Wahlweise kann die Antigenmaskierung auch mit Citratpuffer pH 6,0 erfolgen.

Positivkontrollen:

WB: HEK-293-Zellen, A549-Zellen, C6-Zellen, Caco-2-Zellen, HeLa-Zellen, HepG2-Zellen, Jurkat-Zellen, Maushirngewebe, Maus-Kolongewebe, Mausebergewebe, NIH/3T3-Zellen, Rattenhirngewebe, Rattenlebergewebe, Rattenmilzgewebe, Rattennierengewebe, RAW 264.7-Zellen, SMMC-7721-Zellen

IHC: humanes Kolongewebe, humanes Nierengewebe

IF: MDCK-Zellen,

Hintergrundinformationen

Beta Actin, also named as ACTB and F-Actin, belongs to the actin family. Actins are highly conserved globular proteins that are involved in various types of cell motility and are ubiquitously expressed in all eukaryotic cells. At least six isoforms of actins are known in mammals and other vertebrates: alpha (ACTC1, cardiac muscle 1), alpha 1 (ACTA1, skeletal muscle) and 2 (ACTA2, aortic smooth muscle), beta (ACTB), gamma 1 (ACTG1) and 2 (ACTG2, enteric smooth muscle). Beta and gamma 1 are two non-muscle actin proteins. Most actins consist of 376aa, while ACTG2 (rich in muscles) has 375aa and ACTG1(found in non-muscle cells) has only 374aa. Beta actin has been widely used as the internal control in RT-PCR and Western Blotting as a 42-kDa protein. However, the 37-40, 31, 15 kDa cleaved fragment of beta actin can be generated during apoptosis process. This antibody was generated against N-terminal region of human beta actin protein and can cross-react with other actins. (9173887, 11217076, 10229193)

Bemerkenswerte Veröffentlichungen

Verfasser	Pubmed ID	Journal	Anwendung
Xiao-Feng Zhu	36180975	Phytother Res	WB
Yu Xu	36247302	Am J Transl Res	WB
Ling Guo	34867437	Front Physiol	WB

Lagerung

Lagerungsbedingungen:

Bei -20°C lagern. Nach dem Versand ein Jahr lang stabil

Lagerungspuffer:

PBS mit 0.02% Natriumazid und 50% Glycerin pH 7.3.

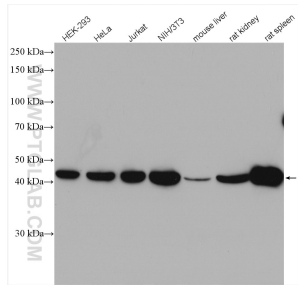
Aliquotieren ist nicht notwendig bei -20°C Lagerung

***** 20ul-Größen enthalten 0.1% BSA**

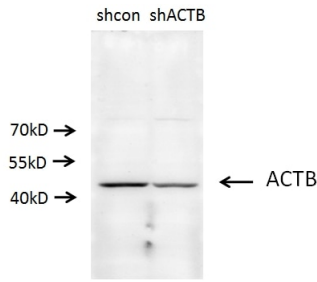
For technical support and original validation data for this product please contact:
T: 1 (888) 4PTGLAB (1-888-478-4522) (toll free in USA), or 1(312) 455-8498 (outside USA)
E: proteintech@ptglab.com
W: ptglab.com

This product is exclusively available under Proteintech Group brand and is not available to purchase from any other manufacturer.

Ausgewählte Validierungsdaten



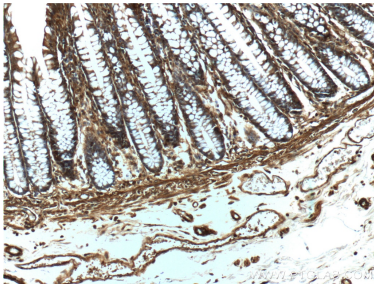
Various lysates were subjected to SDS PAGE followed by western blot with 20536-1-AP (beta Actin antibody) at dilution of 1:5000 incubated at room temperature for 1.5 hours.



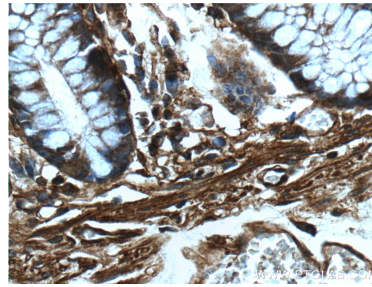
A549 cells (shcontrol and shRNA of Beta actin) were subjected to SDS PAGE followed by western blot with 20536-1-AP (ACTB antibody) at dilution of 1:500.



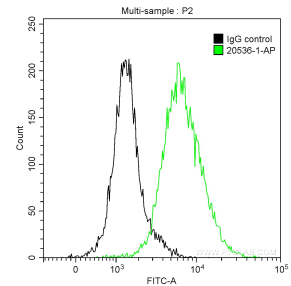
Immunofluorescent analysis of (-20°C Methanol) fixed MDCK cells using Beta Actin antibody (20536-1-AP) at dilution of 1:400 and CoraLite®488-Conjugated AffiniPure Goat Anti-Rabbit IgG(H+L).



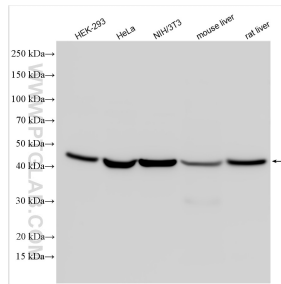
Immunohistochemical analysis of paraffin-embedded human colon tissue slide using 20536-1-AP (beta actin Antibody) at dilution of 1:200 (under 10x lens).



Immunohistochemical analysis of paraffin-embedded human colon tissue slide using 20536-1-AP (beta actin Antibody) at dilution of 1:200 (under 40x lens).



1×10^6 HepG2 cells were intracellularly stained with 0.2 ug Anti-Human Beta Actin (20536-1-AP) and CoraLite®488-Conjugated AffiniPure Goat Anti-Rabbit IgG(H+L) at dilution 1:1000 (green), and 0.2 ug Control Antibody. Cells were fixed with 90% MeOH.



Various lysates were subjected to SDS PAGE followed by western blot with 20536-1-AP (Beta Actin antibody) at dilution of 1:10000 incubated at room temperature for 1.5 hours.