

Allgemeine Informationen

Katalog-Nr.:
20567-1-AP

Größe:
150ul, Konzentration: 550 µg/ml von
Nanodrop;

Wirt:
Kaninchen

Isotyp:
IgG

GenBank-Zugangsnummer:
NML_030621

GeneID (NCBI):
23405

Vollständiger Name:
dicer 1, ribonuclease type III

Berechnete Masse:
219 kDa

Beobachtete Masse:
220-250 kDa, 90 kDa

Reinigungsmethode:

Antigen-Affinitätsreinigung

Empfohlene Verdünnungen:

WB 1:200-1:1000

IP 0.5-4.0 µg für IP und 1:200-1:1000
für WB

IHC 1:50-1:500

IF 1:10-1:100

Anwendungen

Geprüfte Anwendungen:

IF, IHC, IP, WB, ELISA

In Publikationen genannte Anwendungen:

IF, IHC, IP, WB

Getestete Reaktivität:

Human

Zitierte Arten:

Human

Hinweis-IHC: Antigenmaskierung mit TE-Puffer pH 9,0 empfohlen. (*) Wahlweise kann die Antigenmaskierung auch mit Citratpuffer pH 6,0 erfolgen.

Positivkontrollen:

WB: HeLa-Zellen, HepG2-Zellen, K-562-Zellen

IP: Jurkat-Zellen,

IHC: humanes Hodengewebe, humanes
Lungenkarzinomgewebe

IF: HepG2-Zellen, humanes Ovarialkarzinomgewebe

Hintergrundinformationen

DICER1, also named as DICER, HERNA and KIAA0928, belongs to the helicase family and Dicer subfamily. It is required for formation of the RNA induced silencing complex (RISC). DICER1 is a component of the RISC loading complex (RLC), also known as the micro-RNA (miRNA) loading complex (miRLC), which is composed of DICER1, EIF2C2/AGO2 and TARBP2. Within the RLC/miRLC, DICER1 and TARBP2 are required to process precursor miRNAs (pre-miRNAs) to mature miRNAs and then load them onto EIF2C2/AGO2. EIF2C2/AGO2 bound to the mature miRNA constitutes the minimal RISC and may subsequently dissociate from DICER1 and TARBP2. DICER1 cleaves double-stranded RNA to produce short interfering RNAs (siRNAs) which target the selective destruction of complementary RNAs. The antibody is specific to DICER1. The calculated molecular weight of DICER1 is 219 kDa, but modified DICER1 is about 220-250 kDa. DICER1 exists some isoforms with molecular weight 219 kDa and 93 kDa.

Bemerkenswerte Veröffentlichungen

Verfasser	Pubmed ID	Journal	Anwendung
An Yan	36273819	Nucleic Acids Res	IF
Yan Wang	34695450	Neurochem Int	WB
Tao Zuo	29049992	Cell Physiol Biochem	WB

Lagerung

Lagerungsbedingungen:

Bei -20°C lagern. Nach dem Versand ein Jahr lang stabil

Lagerungspuffer:

PBS mit 0.02% Natriumazid und 50% Glycerin pH 7.3.

Aliquotieren ist nicht notwendig bei -20°C Lagerung

*** 20ul-Größen enthalten 0.1% BSA

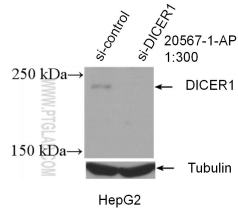
For technical support and original validation data for this product please contact:

T: 1 (888) 4PTGLAB (1-888-478-4522) (toll free
in USA), or 1(312) 455-8498 (outside USA)

E: proteintech@ptglab.com
W: ptglab.com

This product is exclusively available under Proteintech Group brand and is not available to purchase from any other manufacturer.

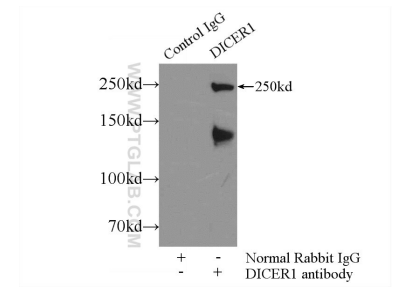
Ausgewählte Validierungsdaten



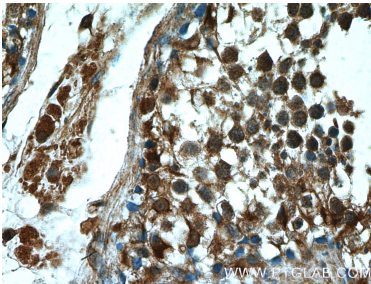
WB result of DICER1 antibody (20567-1-AP; 1:300; incubated at room temperature for 1.5 hours) with sh-Control and sh-DICER1 transfected HepG2 cells.



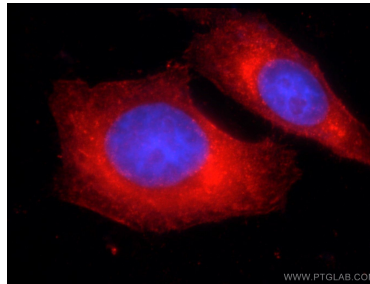
HeLa cells were subjected to SDS PAGE followed by western blot with 20567-1-AP (DICER1 antibody) at dilution of 1:300 incubated at room temperature for 1.5 hours.



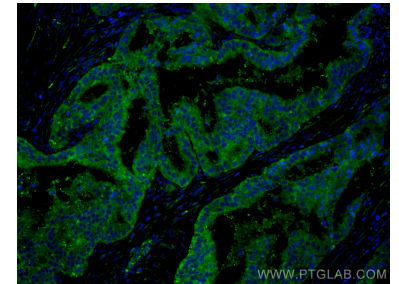
IP Result of anti-DICER1 (IP:20567-1-AP, 5 μ g; Detection:20567-1-AP 1:300) with Jurkat cells lysate 2000 μ g.



Immunohistochemical analysis of paraffin-embedded human testis tissue slide using 20567-1-AP (DICER1 Antibody) at dilution of 1:200 (under 40x lens).



Immunofluorescent analysis of HepG2 cells using 20567-1-AP (DICER1 antibody) at dilution of 1:25 and Rhodamine-Goat anti-Rabbit IgG.



Immunofluorescent analysis of (4% PFA) fixed human ovary tumor tissue using DICER1 antibody (20567-1-AP) at dilution of 1:200 and CoraLite@488-Conjugated AffiniPure Goat Anti-Rabbit IgG(H+L).