

Nur für Forschungszwecke

PI3 Kinase p110 Beta Polyklonaler Antikörper



Katalog-Nr.: 20584-1-AP

Vorgestelltes Produkt

297 Publikationen

Allgemeine Informationen

Katalog-Nr.:
20584-1-AP

Größe:

150ul, Konzentration: 1000 µg/ml von 5291

Nanodrop;

Wirt:

Kaninchen

Isotyp:

IgG

GenBank-Zugangsnummer:

NM_006219

GeneID (NCBI):

von 5291

Vollständiger Name:

phosphoinositide-3-kinase, catalytic,
beta polypeptide

Berechnete Masse:

123 kDa

Beobachtete Masse:

110-130 kDa

Reinigungsmethode:

Antigen-Affinitätsreinigung

Empfohlene Verdünnungen:

WB 1:200-1:1000

IP 0.5-4.0 µg für IP und 1:200-1:1000

für WB

IHC 1:50-1:500

Anwendungen

Geprüfte Anwendungen:

FC, IHC, IP, WB, ELISA

In Publikationen genannte Anwendungen:

CoIP, IF, IHC

Getestete Reaktivität:

Human, Ratte

Zitierte Arten:

Fisch, Hausschwein, Huhn, Human, Hund, Maus, Ratte,
Zebrafisch, Riesenscheibenbrasse (Megalobrama
amblycephala)

**Hinweis-IHC: Antigendemaskierung mit TE-
Puffer pH 9,0 empfohlen. (*) Wahlweise
kann die Antigendemaskierung auch mit
Citratpuffer pH 6,0 erfolgen.**

Positivkontrollen:

WB: Rattenlebergewebe,

IP: HepG2-Zellen,

IHC: humanes Lungenkarzinomgewebe,

Hintergrundinformationen

PIK3CB (phosphatidylinositol 4,5-bisphosphate 3-kinase catalytic subunit beta isoform) is also named as PIK3C1, PI3K-beta, p110beta. The gene encodes a 1070 amino acid protein which belongs to the PI3/PI4-kinase family. Phosphoinositide 3-kinases (PI3Ks) have been implicated as participants in signaling pathways regulating cell growth by virtue of their activation in response to various mitogenic stimuli. The class I PI3 kinases are heterodimers composed of 110 kDa catalytic subunits that associate with regulatory adaptor proteins. Four class I catalytic subunits have been identified, PIK3CA (p110α), PIK3CB (p110β), PIK3CD (p110δ) and PIK3CG (p110γ) (PMID:19177002). This antibody is specific to PIK3CB.

Bemerkenswerte Veröffentlichungen

Verfasser	Pubmed ID	Journal	Anwendung
Yangmeng Zhao	36178125	Redox Rep	WB
Tong Li	33152931	Biomed Pharmacother	WB
Samana Batool	30274346	Int J Mol Sci	WB

Lagerung

Lagerungsbedingungen:

Bei -20°C lagern. Nach dem Versand ein Jahr lang stabil

Lagerungspuffer:

PBS mit 0.02% Natriumazid und 50% Glycerin pH 7.3.

Aliquotieren ist nicht notwendig bei -20°C Lagerung

*** 20ul-Größen enthalten 0.1% BSA

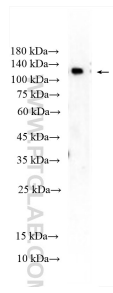
For technical support and original validation data for this product please contact:

T: 1 (888) 4PTGLAB (1-888-478-4522) (toll free
in USA), or 1(312) 455-8498 (outside USA)

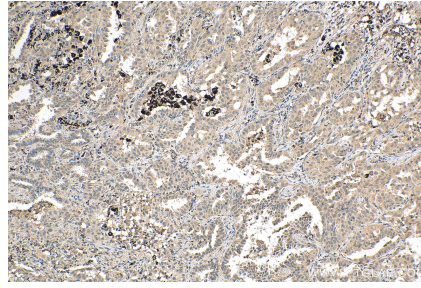
E: proteintech@ptglab.com
W: ptglab.com

This product is exclusively available under Proteintech Group brand and is not available to purchase from any other manufacturer.

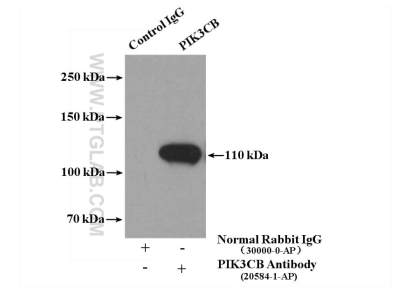
Ausgewählte Validierungsdaten



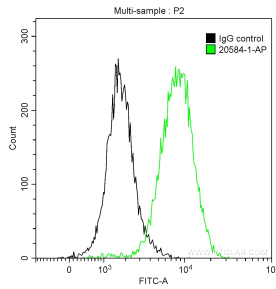
rat liver tissue were subjected to SDS PAGE followed by western blot with 20584-1-AP (PI3 Kinase p110 Beta antibody) at dilution of 1:300 incubated at room temperature for 1.5 hours.



Immunohistochemical analysis of paraffin-embedded human lung cancer tissue slide using 20584-1-AP (PI3 Kinase p110 Beta antibody) at dilution of 1:200 (under 10x lens). Heat mediated antigen retrieval with Tris-EDTA buffer (pH 9.0).



IP Result of anti-PI3K p110(beta) (IP:20584-1-AP, 4ug; Detection:20584-1-AP 1:300) with HepG2 cells lysate 2700ug.



1X10⁶ HeLa cells were intracellularly stained with 0.2 ug Anti-Human PI3 Kinase p110 Beta (20584-1-AP) and CoraLite®488-Conjugated AffiniPure Goat Anti-Rabbit IgG(H+L) at dilution 1:1000 (green), and 0.2 ug Control Antibody. Cells were fixed with 90% MeOH.