

Nur für Forschungszwecke

L1CAM Polyklonaler Antikörper

Katalog-Nr.: 20659-1-AP

3 Publikationen



Allgemeine Informationen

Katalog-Nr.: 20659-1-AP	GenBank-Zugangsnummer: NM_000425	Reinigungsmethode: Antigen-Affinitätsreinigung
Größe: 150ul, Konzentration: 3000 µg/ml von 3897 Nanodrop und 1133 µg/ml durch die Bradford-Methode mit BSA als Standard;	GeneID (NCBI): Vollständiger Name: L1 cell adhesion molecule	Empfohlene Verdünnungen: WB 1:500-1:2000
Wirt: Kaninchen	Berechnete Masse: 140 kDa	
Isotyp: IgG	Beobachtete Masse: 200-220 kDa, 80 kDa	

Anwendungen

Geprüfte Anwendungen: WB, ELISA	Positivkontrollen: WB: Maushirngewebe, Rattenhirngewebe
In Publikationen genannte Anwendungen: IHC, WB	
Getestete Reaktivität: Human, Maus, Ratte	
Zitierte Arten: Human	

Hintergrundinformationen

L1CAM, also known as NCAM-L1 or CD171, is a cell adhesion molecule of the immunoglobulin superfamily. It is a 200-220 kDa transmembrane glycoprotein composed of six Ig-like domains and five fibronectin type III repeats followed by a transmembrane region and a highly conserved cytoplasmic tail (PMID: 3412448; 22796939). L1CAM is primarily expressed in the nervous system and is involved in neuron-neuron adhesion, neurite fasciculation, outgrowth of neurites, cerebellar granule cell migration, neurite outgrowth on Schwann cells and interactions among epithelial cells of intestinal crypts (PMID: 3412448; 10767310). L1CAM is overexpressed in many human cancers and is often associated with bad prognosis (PMID: 27267927; 26111503). It has been reported that L1CAM can be proteolytically cleaved into a soluble fragment of 140 kDa and an intracellular fragment of 80-85 kDa (PMID: 30842511; 34380733). This antibody raised against 1206-1221aa of human L1CAM detects 200-220 kDa full-length L1CAM and 80-kDa cleaved fragment of L1CAM.

Bemerkenswerte Veröffentlichungen

Verfasser	Pubmed ID	Journal	Anwendung
Sunitha Kodidela	32481515	Diagnostics (Basel)	WB
Kuo Tong	31997427	Histopathology	IHC
Jiahao Li	36943894	Anal Chem	

Lagerung

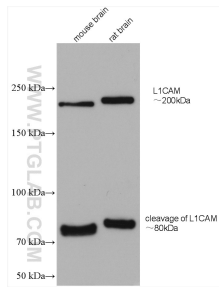
Lagerungsbedingungen:
Bei -20°C lagern. Nach dem Versand ein Jahr lang stabil
Lagerungspuffer:
PBS mit 0.02% Natriumazid und 50% Glycerin pH 7.3.
Aliquotieren ist nicht notwendig bei -20°C Lagerung

*** 20ul-Größen enthalten 0.1% BSA

For technical support and original validation data for this product please contact:
T: 1 (888) 4PTGLAB (1-888-478-4522) (toll free in USA), or 1(312) 455-8498 (outside USA)
E: proteintech@ptglab.com
W: ptglab.com

This product is exclusively available under Proteintech Group brand and is not available to purchase from any other manufacturer.

Ausgewählte Validierungsdaten



Various lysates were subjected to SDS PAGE followed by western blot with 20659-1-AP (L1CAM antibody) at dilution of 1:1000 incubated at room temperature for 1.5 hours.