

Nur für Forschungszwecke

# PAWR Polyklonaler Antikörper

Katalog-Nr.:20688-1-AP

2 Publikationen



## Allgemeine Informationen

<b>Katalog-Nr.:</b> 20688-1-AP	<b>GenBank-Zugangsnummer:</b> NM_002583	<b>Reinigungsmethode:</b> Antigen-Affinitätsreinigung
<b>Größe:</b> 150ul, Konzentration: 500 µg/ml von Nanodrop und 427 µg/ml durch die Bradford-Methode mit BSA als Standard;	<b>GeneID (NCBI):</b> 5074	<b>Empfohlene Verdünnungen:</b> WB 1:500-1:1000 IHC 1:20-1:200
<b>Wirt:</b> Kaninchen	<b>Vollständiger Name:</b> PRKC, apoptosis, WT1, regulator	
<b>Isotyp:</b> IgG	<b>Berechnete Masse:</b> 37 kDa	
	<b>Beobachtete Masse:</b> 45 kDa	

## Anwendungen

### Geprüfte Anwendungen:

FC, IHC, WB, ELISA

### In Publikationen genannte Anwendungen:

IHC, WB

### Getestete Reaktivität:

Human, Maus, Ratte

### Zitierte Arten:

Human

**Hinweis-IHC: Antigendemaskierung mit TE-Puffer pH 9,0 empfohlen. (\*) Wahlweise kann die Antigendemaskierung auch mit Citratpuffer pH 6,0 erfolgen.**

### Positivkontrollen:

WB : Mausherzgewebe, Mausnierengewebe

IHC : humanes Mammakarzinomgewebe, humanes Nierengewebe

## Hintergrundinformationen

PAWR, also named as PAR4, is a pro-apoptotic protein capable of selectively inducing apoptosis in cancer cells, sensitizing the cells to diverse apoptotic stimuli and causing regression of tumors in animal models. It induces apoptosis in certain cancer cells by activation of the Fas prodeath pathway and coparallel inhibition of NF-kappa-B transcriptional activity. PAWR inhibits the transcriptional activation and augments the transcriptional repression mediated by WT1. It down-regulates the anti-apoptotic protein BCL2 via its interaction with WT1. PAWR may be directly involved in regulating the amyloid precursor protein (APP) cleavage activity of BACE1. The antibody is specific to PAWR.

## Bemerkenswerte Veröffentlichungen

Verfasser	Pubmed ID	Journal	Anwendung
Jiahong Tan	33317551	Cancer Cell Int	IHC
Rokana Taftaf	34381029	Nat Commun	WB

## Lagerung

### Lagerungsbedingungen:

Bei -20°C lagern. Nach dem Versand ein Jahr lang stabil

### Lagerungspuffer:

PBS mit 0.02% Natriumazid und 50% Glycerin pH 7.3.

Aliquotieren ist nicht notwendig bei -20°C Lagerung

\*\*\* 20ul-Größen enthalten 0.1% BSA

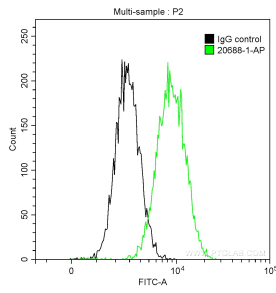
For technical support and original validation data for this product please contact:

T: 1 (888) 4PTGLAB (1-888-478-4522) (toll free in USA), or 1(312) 455-8498 (outside USA)

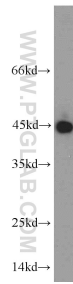
E: proteintech@ptglab.com  
W: ptglab.com

This product is exclusively available under Proteintech Group brand and is not available to purchase from any other manufacturer.

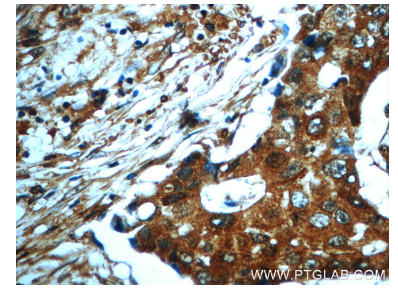
## Ausgewählte Validierungsdaten



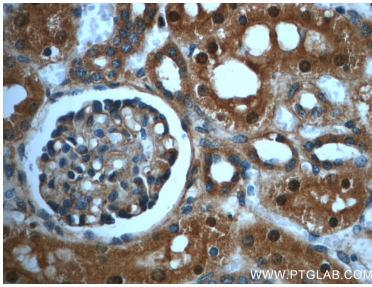
1X10<sup>6</sup> HeLa cells were intracellularly stained with 0.2 ug Anti-Human PAWR (20688-1-AP) and CoraLite®488-Conjugated AffiniPure Goat Anti-Rabbit IgG(H+L) at dilution 1:1000 (green), and 0.2 ug Control Antibody. Cells were fixed with 90% MeOH.



mouse heart tissue were subjected to SDS PAGE followed by western blot with 20688-1-AP (PAWR antibody) at dilution of 1:400 incubated at room temperature for 1.5 hours.



Immunohistochemical analysis of paraffin-embedded human breast cancer slide using 20688-1-AP (PAWR Antibody) at dilution of 1:50.



Immunohistochemical analysis of paraffin-embedded human kidney slide using 20688-1-AP (PAWR Antibody) at dilution of 1:50.