

## Allgemeine Informationen

<b>Katalog-Nr.:</b> 20689-1-AP	<b>GenBank-Zugangsnummer:</b> NM_005045	<b>Reinigungsmethode:</b> Antigen-Affinitätsreinigung
<b>Größe:</b> 150ul , Konzentration: 700 µg/ml von Nanodrop und 300 µg/ml durch die Bradford-Methode mit BSA als Standard;	<b>GeneID (NCBI):</b> 5649	<b>Empfohlene Verdünnungen:</b> IHC 1:50-1:500 IF 1:50-1:500
<b>Wirt:</b> Kaninchen	<b>Vollständiger Name:</b> reelin	
<b>Isotyp:</b> IgG	<b>Berechnete Masse:</b> 388 kDa	

## Anwendungen

<b>Geprüfte Anwendungen:</b> IF, IHC, ELISA	<b>Positivkontrollen:</b> IHC : humanes Leberkarzinomgewebe, humanes Lebergewebe IF : Maushirngewebe,
<b>Getestete Reaktivität:</b> Human, Maus	
<b>Hinweis-IHC: Antigendemaskierung mit TE-Puffer pH 9,0 empfohlen. (*) Wahlweise kann die Antigendemaskierung auch mit Citratpuffer pH 6,0 erfolgen.</b>	

## Hintergrundinformationen

RELN belongs to the reelin family. It is an extracellular matrix serine protease that plays a role in layering of neurons in the cerebral cortex and cerebellum. It is a secreted glycoprotein which is essential for neuronal migration in the cortex. RELN regulates microtubule function in neurons and neuronal migration. It affects migration of sympathetic preganglionic neurons in the spinal cord, where it seems to act as a barrier to neuronal migration. Enzymatic activity is important for the modulation of cell adhesion. Binding to the extracellular domains of lipoprotein receptors VLDLR and ApoER2, RELN induces tyrosine phosphorylation of Dab1 and modulation of Tau phosphorylation. Defects in RELN are the cause of lissencephaly type 2 (LIS2).

## Lagerung

**Lagerungsbedingungen:**  
Bei -20°C lagern. Nach dem Versand ein Jahr lang stabil

**Lagerungspuffer:**  
PBS mit 0.02% Natriumazid und 50% Glycerin pH 7.3.

Aliquotieren ist nicht notwendig bei -20°C Lagerung

**\*\*\* 20ul-Größen enthalten 0.1% BSA**

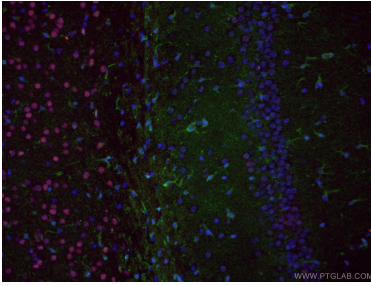
For technical support and original validation data for this product please contact:

T: 1 (888) 4PTGLAB (1-888-478-4522) (toll free  
in USA), or 1(312) 455-8498 (outside USA)

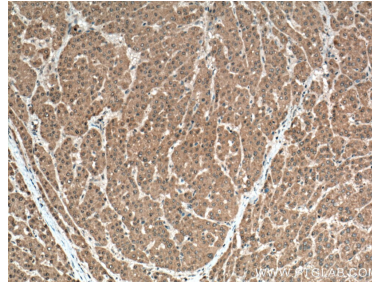
E: [proteintech@ptglab.com](mailto:proteintech@ptglab.com)  
W: [ptglab.com](http://ptglab.com)

**This product is exclusively available under Proteintech Group brand and is not available to purchase from any other manufacturer.**

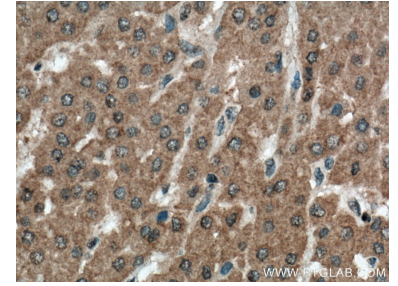
## Ausgewählte Validierungsdaten



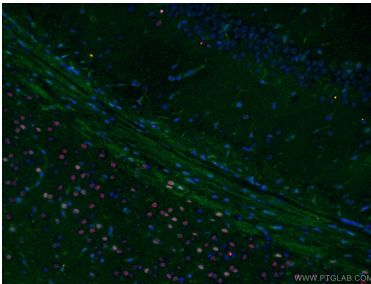
Dual immunofluorescent analysis of (4% PFA) fixed mouse brain tissue using 20689-1-AP (RELN antibody) at dilution of 1:50 and 66564-1-Ig (Tbr1 antibody), further stained with Alexa Fluor 488-Conjugated AffiniPure Goat Anti-Rabbit IgG(H+L) for 20689-1-AP and Alexa Fluor 594-Conjugated AffiniPure Goat Anti-Mouse IgG(H+L) for 66564-1-Ig.



Immunohistochemical analysis of paraffin-embedded human liver cancer tissue slide using 20689-1-AP (RELN antibody) at dilution of 1:200 (under 10x lens. Heat mediated antigen retrieval with Tris-EDTA buffer (pH 9.0).



Immunohistochemical analysis of paraffin-embedded human liver cancer tissue slide using 20689-1-AP (RELN antibody) at dilution of 1:200 (under 40x lens. Heat mediated antigen retrieval with Tris-EDTA buffer (pH 9.0).



Dual immunofluorescent analysis of (4% PFA) fixed mouse brain tissue using 20689-1-AP (RELN antibody) at dilution of 1:50 and 66564-1-Ig (Tbr1 antibody), further stained with Alexa Fluor 488-Conjugated AffiniPure Goat Anti-Rabbit IgG(H+L) for 20689-1-AP and Alexa Fluor 594-Conjugated AffiniPure Goat Anti-Mouse IgG(H+L) for 66564-1-Ig.