

Allgemeine Informationen

Katalog-Nr.: 20697-1-AP	GenBank-Zugangsnummer: NM_000193	Reinigungsmethode: Antigen-Affinitätsreinigung
Größe: 150ul , Konzentration: 850 µg/ml von Nanodrop;	GeneID (NCBI): 6469	Empfohlene Verdünnungen: WB 1:500-1:3000 IP 0.5-4.0 ug für IP und 1:500-1:1000
Wirt: Kaninchen	Vollständiger Name: sonic hedgehog homolog (Drosophila)	für WB IHC 1:50-1:500 IF 1:10-1:100
Isotyp: IgG	Berechnete Masse: 50 kDa	
	Beobachtete Masse: 45-51 kDa	

Anwendungen

Geprüfte Anwendungen:

IF, IHC, IP, WB, ELISA

In Publikationen genannte Anwendungen:

IF, IHC, WB

Getestete Reaktivität:

Human, Maus, Ratte

Zitierte Arten:

Human, Maus, Ratte, Nerz

Hinweis-IHC: Antigendemaskierung mit TE-Puffer pH 9,0 empfohlen. (*) Wahlweise kann die Antigendemaskierung auch mit Citratpuffer pH 6,0 erfolgen.

Positivkontrollen:

WB: HeLa-Zellen, HepG2-Zellen, LNCaP-Zellen, Mauslebergewebe, PC-3-Zellen, Rattenlebergewebe, Rattennierengewebe

IP: Mauslebergewebe,

IHC: humanes Leberkarzinomgewebe, humanes Ovarialkarzinomgewebe, humanes Pankreaskarzinomgewebe, Mausembryogewebe, Mausnierengewebe

IF: HepG2-Zellen, Mausnierengewebe

Hintergrundinformationen

SHH, also named as HHG-1, belongs to the hedgehog family. SHH binds to the patched (PTC) receptor, which functions in association with smoothened (SMO), to activate the transcription of target genes. In the absence of SHH, PTC represses the constitutive signaling activity of SMO. It regulates another target, the gli oncogene. The Shh protein is synthesized as a 45-kDa precursor that undergoes an autocatalytic processing event that produces a 19-kDa N-terminal product, responsible for all signaling activities, and a 25-kDa C-terminal fragment (PMID:10753901, PMID: 16282375).

Bemerkenswerte Veröffentlichungen

Verfasser	Pubmed ID	Journal	Anwendung
Pai Pang	26427874	Biochem Biophys Res Commun	IHC, IF
Lanlan Li	36102251	J Am Heart Assoc	WB
Zipeng Xie	32931885	Cancer Lett	WB

Lagerung

Lagerungsbedingungen:

Bei -20°C lagern. Nach dem Versand ein Jahr lang stabil

Lagerungspuffer:

PBS mit 0.02% Natriumazid und 50% Glycerin pH 7.3.

Aliquotieren ist nicht notwendig bei -20°C Lagerung

*** 20ul-Größen enthalten 0.1% BSA

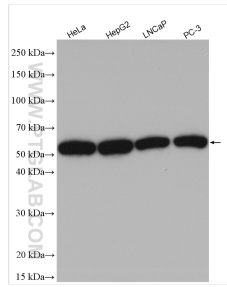
For technical support and original validation data for this product please contact:

T: 1 (888) 4PTGLAB (1-888-478-4522) (toll free in USA), or 1(312) 455-8498 (outside USA)

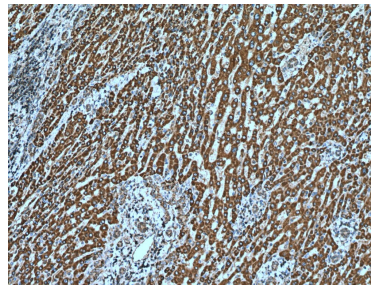
E: proteintech@ptglab.com
W: ptglab.com

This product is exclusively available under Proteintech Group brand and is not available to purchase from any other manufacturer.

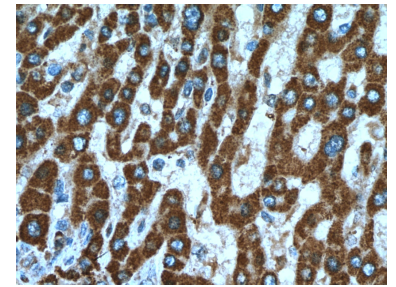
Ausgewählte Validierungsdaten



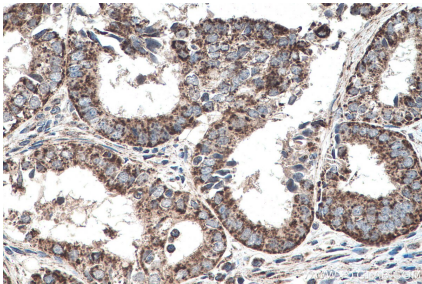
Various lysates were subjected to SDS PAGE followed by western blot with 20697-1-AP (SHH antibody) at dilution of 1:1500 incubated at room temperature for 1.5 hours.



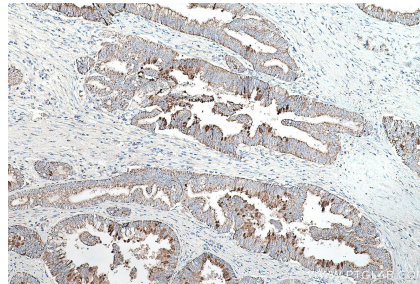
Immunohistochemical analysis of paraffin-embedded human liver cancer tissue slide using 20697-1-AP (SHH antibody) at dilution of 1:200 (under 10x lens). Heat mediated antigen retrieval with Tris-EDTA buffer (pH 9.0).



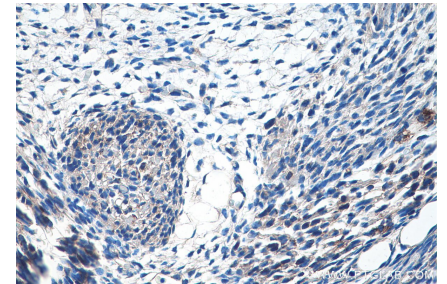
Immunohistochemical analysis of paraffin-embedded human liver cancer tissue slide using 20697-1-AP (SHH antibody) at dilution of 1:200 (under 40x lens). Heat mediated antigen retrieval with Tris-EDTA buffer (pH 9.0).



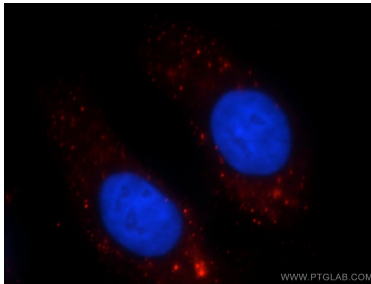
Immunohistochemical analysis of paraffin-embedded human ovary tumor tissue slide using 20697-1-AP (SHH antibody) at dilution of 1:500 (under 40x lens). Heat mediated antigen retrieval with Tris-EDTA buffer (pH 9.0).



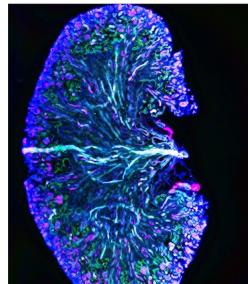
Immunohistochemical analysis of paraffin-embedded human pancreas cancer tissue slide using 20697-1-AP (SHH antibody) at dilution of 1:2000 (under 10x lens). Heat mediated antigen retrieval with Tris-EDTA buffer (pH 9.0).



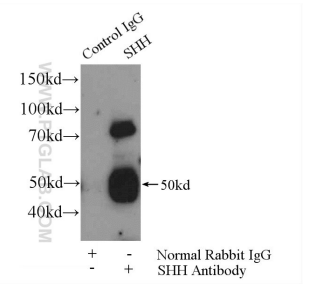
Immunohistochemical analysis of paraffin-embedded mouse embryo tissue slide using 20697-1-AP (SHH antibody) at dilution of 1:500 (under 40x lens). Heat mediated antigen retrieval with Tris-EDTA buffer (pH 9.0).



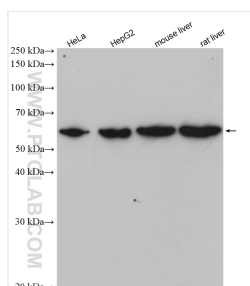
Immunofluorescent analysis of HepG2 cells, using SHH antibody 20697-1-AP at 1:25 dilution and Rhodamine-labeled goat anti-rabbit IgG (red). Blue pseudocolor = DAPI (fluorescent DNA dye).



Frozen tissue section of adult mouse kidney was stained for acetylated α -tubulin (magenta, Cat. No CL488-66200), CD31/PECAM-1 (white), and Shh (green, Cat. No 20697-1-AP) with DAPI as a counterstain for visualizing the nucleus (blue). acetylated α -tubulin stains primary cilia and was conjugated to Coralite-488 fluorescent dye and pseudocolored to magenta. CD31 stains endocardial/endothelial cells and was visualized with an Alexa Fluor 647 secondary



IP Result of anti-SHH (IP:20697-1-AP, 4ug; Detection:20697-1-AP 1:500) with mouse liver tissue lysate 6400ug.



Various lysates were subjected to SDS PAGE followed by western blot with 20697-1-AP (SHH antibody) at dilution of 1:1500 incubated at room temperature for 1.5 hours.