

Allgemeine Informationen

| | | |
|---|--|---|
| Katalog-Nr.: 20713-1-AP | GenBank-Zugangsnummer: NM_000163 | Reinigungsmethode: Antigen-Affinitätsreinigung |
| Größe: 150ul, Konzentration: 400 µg/ml von Nanodrop und 360 µg/ml durch die Bradford-Methode mit BSA als Standard; | GeneID (NCBI): 2690 | Empfohlene Verdünnungen: WB 1:500-1:1000 IHC 1:50-1:500 IF 1:50-1:500 |
| Wirt: Kaninchen | Vollständiger Name: GH binding protein | |
| Isotyp: IgG | Berechnete Masse: 72 kDa | |
| | Beobachtete Masse: 120 kDa | |

Anwendungen

| | |
|---|---|
| Geprüfte Anwendungen: IF, IHC, WB, ELISA | Positivkontrollen: WB : Hausschwein-Lebergewebe, Hausschwein- Lungengewebe IHC : humanes Lebergewebe, IF : HepG2-Zellen, |
| In Publikationen genannte Anwendungen: WB | |
| Getestete Reaktivität: Hausschwein, Human | |
| Zitierte Arten: Human | |
| Hinweis-IHC: Antigendemaskierung mit TE-Puffer pH 9,0 empfohlen. (*) Wahlweise kann die Antigendemaskierung auch mit Citratpuffer pH 6,0 erfolgen. | |

Hintergrundinformationen

GH is a peptide hormone with many pleiotropic actions, including the regulation of metabolism, postnatal growth, cognition, immune, cardiac and renal systems and gut function (PMID: 26059750). GH exerts these actions primarily through alterations in gene expression, initiated by activation of its membrane receptor GHR and the resultant activation of the associated JAK2 and Src family kinases. GH receptor (GHR) is a member of the cytokine receptor family. Mutations in GHR gene have been associated with Laron syndrome, also known as the GH insensitivity syndrome (GHIS), a disorder characterized by short stature.

Bemerkenswerte Veröffentlichungen

| Verfasser | Pubmed ID | Journal | Anwendung |
|---------------|-----------|----------------|-----------|
| Mo Cheng | 31725956 | FEBS Open Bio | WB |
| Hongmei Zhang | 34252534 | Cell Signal | WB |
| Hong-Zhu Yan | 33492754 | J Cell Mol Med | WB |

Lagerung

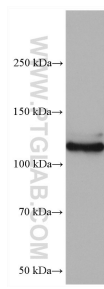
Lagerungsbedingungen:
Bei -20°C lagern. Nach dem Versand ein Jahr lang stabil
Lagerungspuffer:
PBS mit 0.02% Natriumazid und 50% Glycerin pH 7.3.
Aliquotieren ist nicht notwendig bei -20°C Lagerung

***** 20ul-Größen enthalten 0.1% BSA**

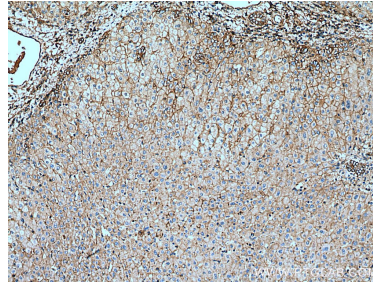
For technical support and original validation data for this product please contact:
T: 1 (888) 4PTGLAB (1-888-478-4522) (toll free in USA), or 1(312) 455-8498 (outside USA)
E: proteintech@ptglab.com
W: ptglab.com

This product is exclusively available under Proteintech Group brand and is not available to purchase from any other manufacturer.

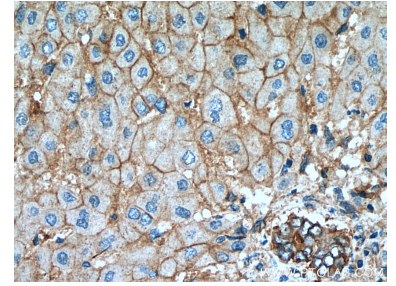
Ausgewählte Validierungsdaten



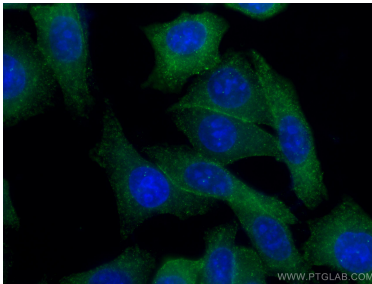
pig liver tissue were subjected to SDS PAGE followed by western blot with 20713-1-AP (GHR antibody) at dilution of 1:600 incubated at room temperature for 1.5 hours.



Immunohistochemical analysis of paraffin-embedded human liver tissue slide using 20713-1-AP (GHR antibody) at dilution of 1:200 (under 10x lens). Heat mediated antigen retrieval with Tris-EDTA buffer (pH 9.0).



Immunohistochemical analysis of paraffin-embedded human liver tissue slide using 20713-1-AP (GHR antibody) at dilution of 1:200 (under 40x lens). Heat mediated antigen retrieval with Tris-EDTA buffer (pH 9.0).



Immunofluorescent analysis of (-20°C Ethanol) fixed HepG2 cells using 20713-1-AP (GHR antibody), at dilution of 1:200 and CoraLite®488-Conjugated AffiniPure Goat Anti-Rabbit IgG(H+L).