

Allgemeine Informationen

Katalog-Nr.: 20747-1-AP	GenBank-Zugangsnummer: NM_020549	Reinigungsmethode: Antigen-Affinitätsreinigung
Größe: 150ul , Konzentration: 900 µg/ml von Nanodrop;	GeneID (NCBI): 1103	Empfohlene Verdünnungen: WB 1:500-1:1000 IP 0.5-4.0 ug für IP und 1:500-1:1000 für WB
Wirt: Kaninchen	Vollständiger Name: choline acetyltransferase	IHC 1:50-1:500 IF 1:50-1:500
Isotyp: IgG	Berechnete Masse: 83 kDa	
	Beobachtete Masse: 47-50 kDa, 66-70 kDa	

Anwendungen

Geprüfte Anwendungen:

IF, IHC, IP, WB, ELISA

In Publikationen genannte Anwendungen:

FC, IF, IHC, WB

Getestete Reaktivität:

Human, Maus, Ratte

Zitierte Arten:

Human, Maus, Ratte

Hinweis-IHC: Antigendemaskierung mit TE-Puffer pH 9,0 empfohlen. (*) Wahlweise kann die Antigendemaskierung auch mit Citratpuffer pH 6,0 erfolgen.

Positivkontrollen:

WB : Maushirngewebe, humanes Plazenta-Gewebe, Jurkat-Zellen, Maus-Plazenta-Gewebe, Rattenhirngewebe

IP : Rattenhirngewebe,

IHC : Maus-Cerebellum-Gewebe, humanes Lungenkarzinomgewebe, Maushirngewebe, Rattenhirngewebe

IF : Maushirngewebe,

Hintergrundinformationen

CHAT (choline acetyltransferase) belongs to the carnitine/choline acetyltransferase family. It catalyzes the reversible synthesis of acetylcholine (ACh) from acetyl CoA and choline at cholinergic synapses. Defects in CHAT are the cause of congenital myasthenic syndrome with episodic apnea (CMSEA). CHAT is known to be present exclusively in the cytoplasm of cholinergic neurons and anti-CHAT antibody has been considered as the best marker for cholinergic neurons. It has been observed that CHAT gene generates multiple mRNA splice variants, including peripheral type CHAT (pCHAT) and common type CHAT (cCHAT), encoding 40-55 kDa and 66-70 kDa forms of proteins, respectively. This antibody can recognize both of pCHAT and cCHAT.

Bemerkenswerte Veröffentlichungen

Verfasser	Pubmed ID	Journal	Anwendung
Xiaoyan Liu	31574948	Int J Mol Sci	IF
Mu-Jun Chang	27624611	J Dig Dis	WB
Paulina Borkowska	36143442	Life (Basel)	FC

Lagerung

Lagerungsbedingungen:

Bei -20°C lagern. Nach dem Versand ein Jahr lang stabil

Lagerungspuffer:

PBS mit 0.02% Natriumazid und 50% Glycerin pH 7.3.

Aliquotieren ist nicht notwendig bei -20°C Lagerung

*** 20ul-Größen enthalten 0.1% BSA

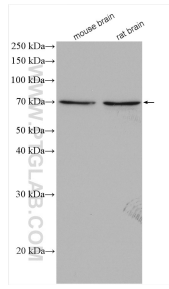
For technical support and original validation data for this product please contact:

T: 1 (888) 4PTGLAB (1-888-478-4522) (toll free in USA), or 1(312) 455-8498 (outside USA)

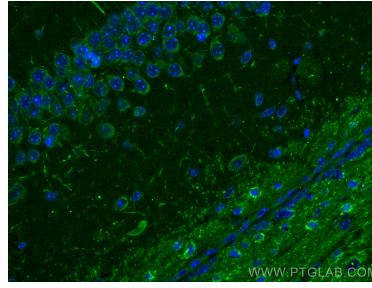
E: proteintech@ptglab.com
 W: ptglab.com

This product is exclusively available under Proteintech Group brand and is not available to purchase from any other manufacturer.

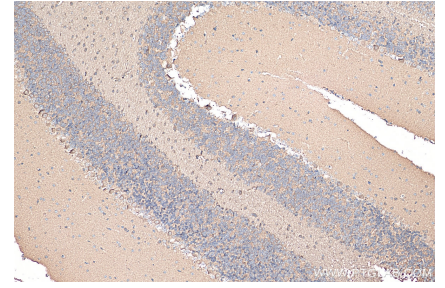
Ausgewählte Validierungsdaten



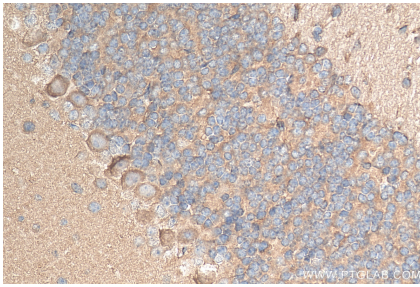
Various lysates were subjected to SDS PAGE followed by western blot with 20747-1-AP (CHAT antibody) at dilution of 1:800 incubated at room temperature for 1.5 hours.



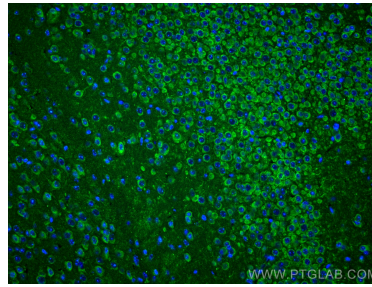
Immunofluorescent analysis of (4% PFA) fixed mouse brain tissue using CHAT antibody (20747-1-AP) at dilution of 1:200 and CoraLite®488-Conjugated AffiniPure Goat Anti-Rabbit IgG(H+L).



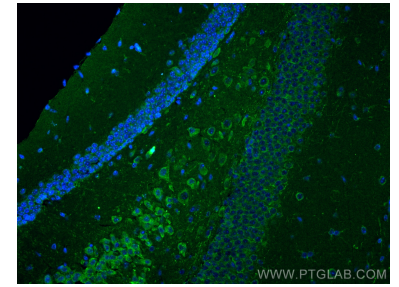
Immunohistochemical analysis of paraffin-embedded mouse cerebellum tissue slide using 20747-1-AP (CHAT antibody) at dilution of 1:200 (under 10x lens). Heat mediated antigen retrieval with Tris-EDTA buffer (pH 9.0).



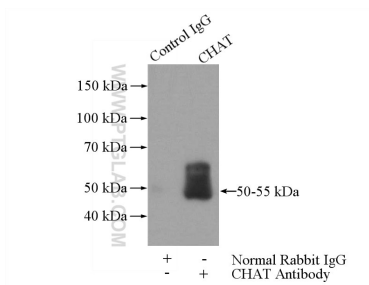
Immunohistochemical analysis of paraffin-embedded mouse cerebellum tissue slide using 20747-1-AP (CHAT antibody) at dilution of 1:200 (under 40x lens). Heat mediated antigen retrieval with Tris-EDTA buffer (pH 9.0).



Immunofluorescent analysis of (4% PFA) fixed mouse brain tissue using CHAT antibody (20747-1-AP) at dilution of 1:200 and CoraLite®488-Conjugated AffiniPure Goat Anti-Rabbit IgG(H+L).



Immunofluorescent analysis of (4% PFA) fixed mouse brain tissue using CHAT antibody (20747-1-AP) at dilution of 1:200 and CoraLite®488-Conjugated AffiniPure Goat Anti-Rabbit IgG(H+L).



IP Result of anti-CHAT (IP:20747-1-AP, 4ug; Detection:20747-1-AP 1:500) with rat brain tissue lysate 4000ug.