

Nur für Forschungszwecke

GSDMD Polyklonaler Antikörper

Katalog-Nr.:20770-1-AP

Vorgestelltes Produkt

129 Publikationen



Allgemeine Informationen

Katalog-Nr.: 20770-1-AP	GenBank-Zugangsnummer: BC008904	Reinigungsmethode: Antigen-Affinitätsreinigung
Größe: 150ul, Konzentration: 550 µg/ml von Nanodrop;	GeneID (NCBI): 79792	Empfohlene Verdünnungen: WB 1:2000-1:10000 IF 1:50-1:500
Wirt: Kaninchen	Vollständiger Name: gasdermin D	
Isotyp: IgG	Berechnete Masse: 484 aa, 53 kDa	
Immunogen Katalognummer: AG14757	Beobachtete Masse: 50-53 kDa	

Anwendungen

Geprüfte Anwendungen:

FC, IF, WB, ELISA

In Publikationen genannte Anwendungen:

FC, IF, IHC, WB

Getestete Reaktivität:

Human, Maus, Ratte

Zitierte Arten:

Hausschwein, Human, Maus, Ratte, Rind

Positivkontrollen:

WB : A431-Zellen, C6-Zellen, Jurkat-Zellen, NIH/3T3-Zellen, Rattenhirngewebe, Rattenlebergewebe

IF : HeLa-Zellen,

Hintergrundinformationen

GSDMD is a member of the gasdermin family. Members of this family appear to play a role in regulation of epithelial proliferation. GSDMD has been suggested to act as a tumor suppressor. Recently, GSDMD is identified as a new component of inflammasomes, and it is an executor of pyroptosis and required for interleukin-1 β secretion. Cleavage of GSDMD by inflammatory caspases determines pyroptotic cell death.

Bemerkenswerte Veröffentlichungen

Verfasser	Pubmed ID	Journal	Anwendung
Xuye Jiang	34630100	Front Pharmacol	WB
Jun Tao	33010604	Placenta	WB
Youliang Wang	31608008	Front Endocrinol (Lausanne)	IHC

Lagerung

Lagerungsbedingungen:

Bei -20°C lagern. Nach dem Versand ein Jahr lang stabil

Lagerungspuffer:

PBS mit 0.02% Natriumazid und 50% Glycerin pH 7.3.

Aliquotieren ist nicht notwendig bei -20°C Lagerung

*** 20ul-Größen enthalten 0.1% BSA

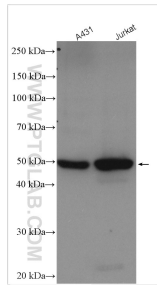
For technical support and original validation data for this product please contact:

T: 1 (888) 4PTGLAB (1-888-478-4522) (toll free in USA), or 1(312) 455-8498 (outside USA)

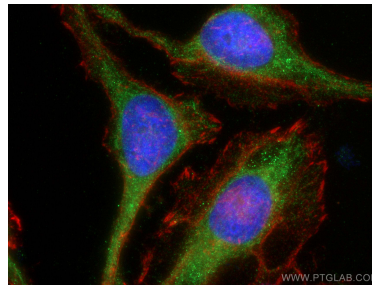
E: proteintech@ptglab.com
W: ptglab.com

This product is exclusively available under Proteintech Group brand and is not available to purchase from any other manufacturer.

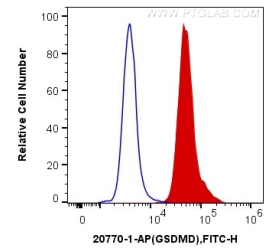
Ausgewählte Validierungsdaten



Various lysates were subjected to SDS PAGE followed by western blot with 20770-1-AP (GSDMD antibody) at dilution of 1:5000 incubated at room temperature for 1.5 hours.



Immunofluorescent analysis of (-20°C Ethanol) fixed HeLa cells using GSDMD antibody (20770-1-AP) at dilution of 1:200 and CoraLite®488-Conjugated AffiniPure Goat Anti-Rabbit IgG(H+L), CL594-Phalloidin (red).



1X10⁶ Jurkat cells were intracellularly stained with 0.2 ug Anti-Human GSDMD (20770-1-AP) and CoraLite®488-Conjugated AffiniPure Goat Anti-Rabbit IgG(H+L) at dilution 1:1000 (red), or 0.2 ug Control Antibody. Cells were fixed with 4% PFA and permeabilized with Flow Cytometry Perm Buffer (PF00011-C).