

Nur für Forschungszwecke

GLAST Polyklonaler Antikörper

Katalog-Nr.: 20785-1-AP

18 Publikationen



Allgemeine Informationen

Katalog-Nr.:
20785-1-AP

Größe:
150ul, Konzentration: 500 µg/ml von
Nanodrop und 360 µg/ml durch die
Bradford-Methode mit BSA als
Standard;

Wirt:
Kaninchen

Isotyp:
IgG

Immunogen Katalognummer:
AG14177

GenBank-Zugangsnummer:
BC037310

GeneID (NCBI):
6507

Vollständiger Name:
solute carrier family 1 (glial high
affinity glutamate transporter),
member 3

Berechnete Masse:
542 aa, 60 kDa

Beobachtete Masse:
50-55 kDa, 90-100 kDa

Reinigungsmethode:

Antigen-Affinitätsreinigung

Empfohlene Verdünnungen:

WB 1:500-1:2000
IP 0.5-4.0 µg für IP und 1:500-1:1000
für WB
IHC 1:20-1:200
IF 1:200-1:800

Anwendungen

Geprüfte Anwendungen:

IF, IHC, IP, WB, ELISA

In Publikationen genannte Anwendungen:

IF, IHC, WB

Getestete Reaktivität:

Human, Maus, Ratte

Zitierte Arten:

Human, Maus, Ratte, Kuh

**Hinweis-IHC: Antigendemaskierung mit TE-
Puffer pH 9,0 empfohlen. (*) Wahlweise
kann die Antigendemaskierung auch mit
Citratpuffer pH 6,0 erfolgen.**

Positivkontrollen:

WB: Neuro-2a-Zellen, C6-Zellen, Maushirngewebe

IP: Maushirngewebe,

IHC: humanes Hirngewebe, Maushirngewebe

IF: Neuro-2a-Zellen,

Hintergrundinformationen

SLC1A3, also known as EAAT-1 or GLAST, is a membrane-bound protein localized in glial cells and pre-synaptic glutamatergic nerve endings. It transports the excitatory neurotransmitters L-glutamate and D-aspartate, which is essential for terminating the postsynaptic action of glutamate. Recently, a correlation between expression/function of glial EAAT-1 and tumor proliferation has been reported. The exceptionally rare expression of EAAT-1 in non-neoplastic choroid plexus (CP) compared to choroid plexus tumors (CPT) may distinguishes neoplastic from normal CP. There are a number of splicing variants of SLC1A3, like GLAST1a and GLAST1b, exist due to the exon skipping. It also undergo glycosylation. Variety of bands can be observed in the western blotting assay: 50-55 kDa represents the unglycosylated GLAST1a or GLAST1b, 65-70 kDa correspond to the glycosylated proteins, larger proteins between 90-130 kDa may be the multimers of SLC1A3. (11086157, 17471058, 12546822)

Bemerkenswerte Veröffentlichungen

Verfasser	Pubmed ID	Journal	Anwendung
Wenlong Zhang	33093440	Cell Death Dis	WB
Ziyi Zhou	36295111	Life (Basel)	IF
Di Qu	36254458	ACS Chem Neurosci	WB,IF

Lagerung

Lagerungsbedingungen:

Bei -20°C lagern. Nach dem Versand ein Jahr lang stabil

Lagerungspuffer:

PBS mit 0.02% Natriumazid und 50% Glycerin pH 7.3.

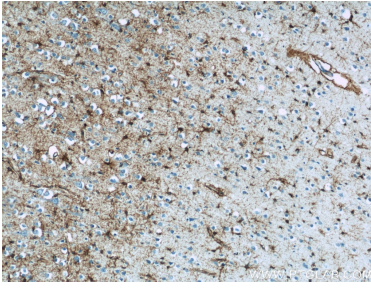
Aliquotieren ist nicht notwendig bei -20°C Lagerung

***** 20ul-Größen enthalten 0.1% BSA**

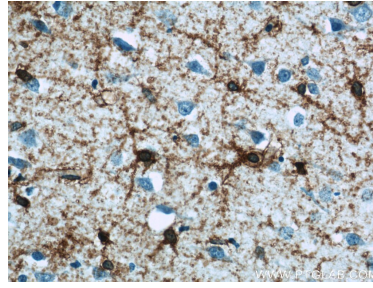
For technical support and original validation data for this product please contact:
T: 1 (888) 4PTGLAB (1-888-478-4522) (toll free in USA), or 1(312) 455-8498 (outside USA)
E: proteintech@ptglab.com
W: ptglab.com

This product is exclusively available under Proteintech Group brand and is not available to purchase from any other manufacturer.

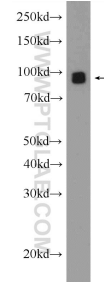
Ausgewählte Validierungsdaten



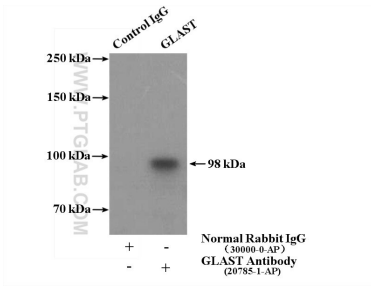
Immunohistochemical analysis of paraffin-embedded human brain tissue slide using 20785-1-AP (GLAST antibody at dilution of 1:50 (under 10x lens).



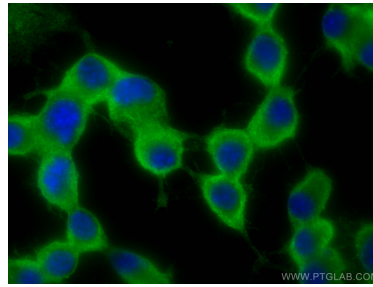
Immunohistochemical analysis of paraffin-embedded human brain tissue slide using 20785-1-AP (GLAST antibody at dilution of 1:50 (under 40x lens).



Neuro-2a cells were subjected to SDS PAGE followed by western blot with 20785-1-AP (GLAST antibody at dilution of 1:1000 incubated at room temperature for 1.5 hours.



IP Result of anti-GLAST (IP:20785-1-AP, 4ug; Detection:20785-1-AP 1:500) with mouse brain tissue lysate 3000ug.



Immunofluorescent analysis of (-20°C Ethanol) fixed Neuro-2a cells using GLAST antibody (20785-1-AP) at dilution of 1:400 and CoraLite@488-Conjugated AffiniPure Goat Anti-Rabbit IgG(H+L).