

Nur für Forschungszwecke

# CLASP1 Polyklonaler Antikörper

Katalog-Nr.:20803-1-AP



## Allgemeine Informationen

<b>Katalog-Nr.:</b> 20803-1-AP	<b>GenBank-Zugangsnummer:</b> BC112940	<b>Reinigungsmethode:</b> Antigen-Affinitätsreinigung
<b>Größe:</b> 150ul, Konzentration: 300 µg/ml von Nanodrop und 227 µg/ml durch die Bradford-Methode mit BSA als Standard;	<b>GeneID (NCBI):</b> 23332	<b>Empfohlene Verdünnungen:</b> WB 1:500-1:3000 IP 0.5-4.0 ug für IP und 1:500-1:1000 für WB IHC 1:50-1:500
<b>Wirt:</b> Kaninchen	<b>Vollständiger Name:</b> cytoplasmic linker associated protein 1	
<b>Isotyp:</b> IgG	<b>Berechnete Masse:</b> 1538 aa, 169 kDa	
<b>Immunogen Katalognummer:</b> AG14724	<b>Beobachtete Masse:</b> 162 kDa	

## Anwendungen

<b>Geprüfte Anwendungen:</b> IHC, IP, WB, ELISA	<b>Positivkontrollen:</b>
<b>Getestete Reaktivität:</b> Human, Maus, Ratte	<b>WB:</b> Maushirngewebe, Rattenhirngewebe
<b>Hinweis-IHC: Antigenmaskierung mit TE-Puffer pH 9,0 empfohlen. (*) Wahlweise kann die Antigenmaskierung auch mit Citratpuffer pH 6,0 erfolgen.</b>	<b>IP:</b> HeLa-Zellen, <b>IHC:</b> humanes Hodengewebe,

## Hintergrundinformationen

CLASP1 is a member of CLASP family. Members of the CLASP family of proteins are involved in multiple MT-dependent processes, including Golgi complex organization and trafficking, kinetochore fiber dynamics and flux, mitotic spindle assembly, and the stabilization of MT plus ends near the cortex. CLASP proteins regulate MT dynamics by promoting MT rescue and suppressing MT catastrophe. Recent work showed that CLASP1 activity is required for proper positioning of the mitotic spindle in both the C. elegans embryo and mammalian cells. Recent work has also identified roles CLASP1 in the regulation of spindle positioning.

## Lagerung

**Lagerungsbedingungen:**  
Bei -20°C lagern. Nach dem Versand ein Jahr lang stabil  
**Lagerungspuffer:**  
PBS mit 0.02% Natriumazid und 50% Glycerin pH 7.3.  
**Aliquotieren ist nicht notwendig bei -20°C Lagerung**

\*\*\* 20ul-Größen enthalten 0.1% BSA

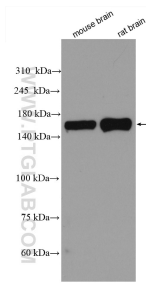
For technical support and original validation data for this product please contact:

T: 1 (888) 4PTGLAB (1-888-478-4522) (toll free in USA), or 1(312) 455-8498 (outside USA)

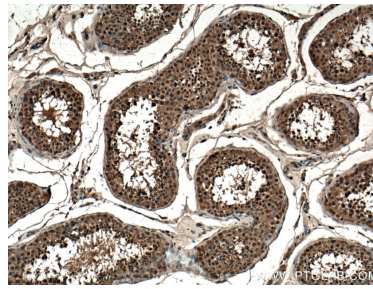
E: proteintech@ptglab.com  
W: ptglab.com

This product is exclusively available under Proteintech Group brand and is not available to purchase from any other manufacturer.

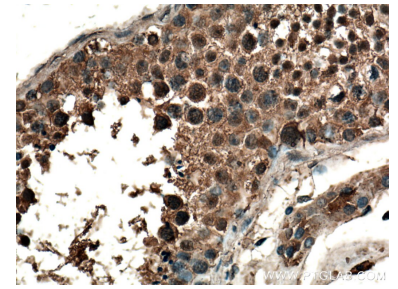
## Ausgewählte Validierungsdaten



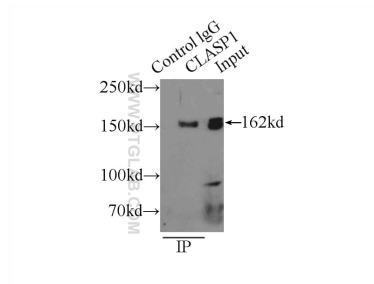
Various lysates were subjected to SDS PAGE followed by western blot with 20803-1-AP (CLASP1 antibody) at dilution of 1:1500 incubated at room temperature for 1.5 hours.



Immunohistochemical analysis of paraffin-embedded human testis tissue slide using 20803-1-AP (CLASP1 antibody) at dilution of 1:200 (under 10x lens. Heat mediated antigen retrieval with Tris-EDTA buffer (pH 9.0).



Immunohistochemical analysis of paraffin-embedded human testis tissue slide using 20803-1-AP (CLASP1 antibody) at dilution of 1:200 (under 40x lens. Heat mediated antigen retrieval with Tris-EDTA buffer (pH 9.0).



IP Result of anti-CLASP1 (IP:20803-1-AP, 4ug; Detection:20803-1-AP 1:500) with HeLa cells lysate 2000ug.