

Nur für Forschungszwecke

# KDM1 Polyklonaler Antikörper

Katalog-Nr.: 20813-1-AP

Vorgestelltes Produkt

6 Publikationen



## Allgemeine Informationen

Katalog-Nr.:  
20813-1-AP

Größe:  
150ul, Konzentration: 450 µg/ml von  
Nanodrop und 353 µg/ml durch die  
Bradford-Methode mit BSA als  
Standard;

Wirt:  
Kaninchen

Isotyp:  
IgG

Immunogen Katalognummer:  
AG14778

GenBank-Zugangsnummer:  
BC040194

GeneID (NCBI):  
23028

Vollständiger Name:  
lysine (K)-specific demethylase 1

Berechnete Masse:  
876 aa, 95 kDa

Beobachtete Masse:  
110 kDa

Reinigungsmethode:

Antigen-Affinitätsreinigung

Empfohlene Verdünnungen:

WB 1:1000-1:4000

IP 0.5-4.0 µg für IP und 1:500-1:1000

für WB

IHC 1:50-1:500

## Anwendungen

Geprüfte Anwendungen:

FC, IHC, IP, WB, ELISA

In Publikationen genannte Anwendungen:

WB

Getestete Reaktivität:

Human, Maus

Zitierte Arten:

Human, Maus

**Hinweis-IHC: Antigenmaskierung mit TE-Puffer pH 9,0 empfohlen. (\*) Wahlweise kann die Antigenmaskierung auch mit Citratpuffer pH 6,0 erfolgen.**

Positivkontrollen:

WB: HEK-293T-Zellen, HEK-293-Zellen, HeLa-Zellen, HT-1080.Zellen, Jurkat-Zellen, MCF-7-Zellen, NIH/3T3-Zellen, PC-3-Zellen

IP: HeLa-Zellen,

IHC: humanes Lungenkarzinomgewebe,

## Hintergrundinformationen

Lysine specific demethylase 1 (LSD1/BHC110/KIAA0601/p110b/AOF2/KDM1) is an amine oxidase that catalyzes histone demethylation via a flavin adenine dinucleotide (FAD)-dependent oxidative reaction (PMID:19703393). This protein belongs to the flavin monoamine oxidase family. Its structure and function is conserved from yeast to human and it is typically associated to CoREST, a corepressor protein, and histone deacetylases HDAC1 and HDAC2. Human LSD1 consists of 852 amino acids and comprises an N-terminal SWIRM domain, involved in protein interactions, and a C-terminal amine oxidase domain, which contains an insertion that forms the CoREST interacting site (the so-called tower domain) (PMID:20164337). It has 2 isoforms produced by alternative splicing with the calculated molecular mass of 93-95 kDa and apparent molecular mass of 110 kDa.

## Bemerkenswerte Veröffentlichungen

Verfasser	Pubmed ID	Journal	Anwendung
Miao Zhang	36175800	Int J Legal Med	WB
Buqing Ye	32449550	EMBO J	WB
Linyu Yan	34180153	Adv Sci (Weinh)	WB

## Lagerung

Lagerungsbedingungen:

Bei -20°C lagern. Nach dem Versand ein Jahr lang stabil

Lagerungspuffer:

PBS mit 0.02% Natriumazid und 50% Glycerin pH 7.3.

Aliquotieren ist nicht notwendig bei -20°C Lagerung

\*\*\* 20ul-Größen enthalten 0.1% BSA

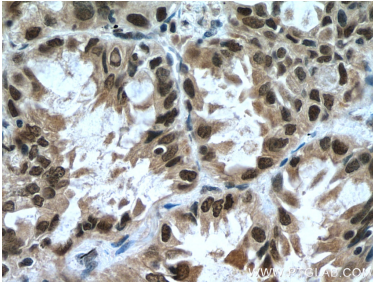
For technical support and original validation data for this product please contact:

T: 1 (888) 4PTGLAB (1-888-478-4522) (toll free in USA), or 1(312) 455-8498 (outside USA)

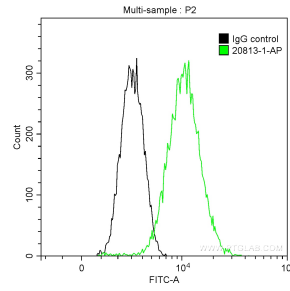
E: proteintech@ptglab.com  
W: ptglab.com

This product is exclusively available under Proteintech Group brand and is not available to purchase from any other manufacturer.

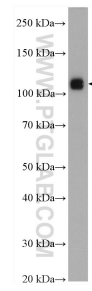
## Ausgewählte Validierungsdaten



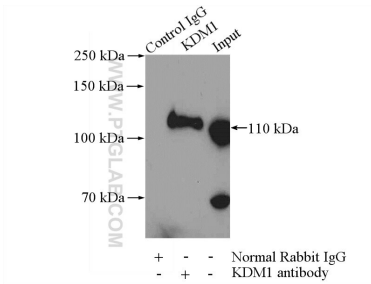
Immunohistochemical analysis of paraffin-embedded human lung cancer tissue slide using 20813-1-AP (KDM1 antibody) at dilution of 1:200 (under 40x lens). Heat mediated antigen retrieval with Tris-EDTA buffer (pH 9.0).



1X10<sup>6</sup> HeLa cells were intracellularly stained with 0.2 ug Anti-Human KDM1 (20813-1-AP) and CoraLite®488-Conjugated AffiniPure Goat Anti-Rabbit IgG(H+L) at dilution 1:1000 (green), and 0.2 ug Control Antibody. Cells were fixed with 90% MeOH.



HEK-293T cells were subjected to SDS PAGE followed by western blot with 20813-1-AP (KDM1 antibody) at dilution of 1:2000 incubated at room temperature for 1.5 hours.



IP Result of anti-KDM1 (IP:20813-1-AP, 4ug; Detection:20813-1-AP 1:600) with HeLa cells lysate 2000ug.