

Allgemeine Informationen

Katalog-Nr.: 20848-1-AP	GenBank-Zugangsnummer: BC002945	Reinigungsmethode: Antigen-Affinitätsreinigung
Größe: 150ul , Konzentration: 350 µg/ml von Nanodrop und 327 µg/ml durch die Bradford-Methode mit BSA als Standard;	GeneID (NCBI): 55684	Empfohlene Verdünnungen: WB 1:500-1:1000 IHC 1:50-1:500 IF 1:50-1:500
Wirt: Kaninchen	Vollständiger Name: chromosome 9 open reading frame 86	
Isotyp: IgG	Berechnete Masse: 729 aa, 80 kDa	
Immunogen Katalognummer: AG14350	Beobachtete Masse: 125 kDa	

Anwendungen

Geprüfte Anwendungen: IF, IHC, WB, ELISA	Positivkontrollen: WB : MDA-MB-453s-Zellen, IHC : humanes Mammakarzinomgewebe, IF : HeLa-Zellen,
In Publikationen genannte Anwendungen: WB	
Getestete Reaktivität: Human	
Zitierte Arten: Human	

Hinweis-IHC: Antigenmaskierung mit TE-Puffer pH 9,0 empfohlen. (*) Wahlweise kann die Antigenmaskierung auch mit Citratpuffer pH 6,0 erfolgen.

Hintergrundinformationen

C9orf86, also known as RBEL1 (Rab-like protein 1), is a novel subfamily of GTPases within the Ras superfamily. It has two splice variants, RBEL1A and RBEL1B. Unlike known Rabs that are mostly cytosolic, RBEL1B predominantly resides in the nucleus, whereas RBEL1A is localized primarily to the cytosol. C9orf86 is overexpressed in the majority of primary breast tumors, and knockdown of C9orf86 in MCF-7 breast cancer cells resulted in cell growth suppression associated with apoptosis [PMID: 23977139]. Western blot analysis revealed that the endogenous RBEL1 migrated at 110-125 kDa, 80 kDa, maybe due to a number of potential O-linked glycosylation sites.[PMID: 17962191]

Bemerkenswerte Veröffentlichungen

Verfasser	Pubmed ID	Journal	Anwendung
Ning Wang	36806253	Cell Death Dis	WB

Lagerung

Lagerungsbedingungen:
Bei -20°C lagern. Nach dem Versand ein Jahr lang stabil
Lagerungspuffer:
PBS mit 0.02% Natriumazid und 50% Glycerin pH 7.3.
 Aliquotieren ist nicht notwendig bei -20°C Lagerung

***** 20ul-Größen enthalten 0.1% BSA**

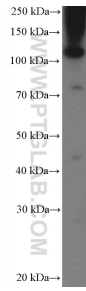
For technical support and original validation data for this product please contact:

T: 1 (888) 4PTGLAB (1-888-478-4522) (toll free in USA), or 1(312) 455-8498 (outside USA)

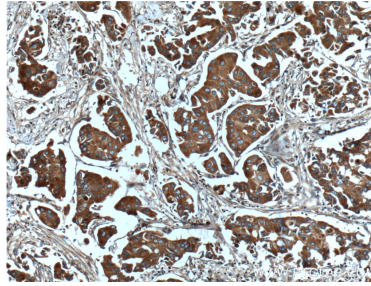
E: proteintech@ptglab.com
 W: ptglab.com

This product is exclusively available under Proteintech Group brand and is not available to purchase from any other manufacturer.

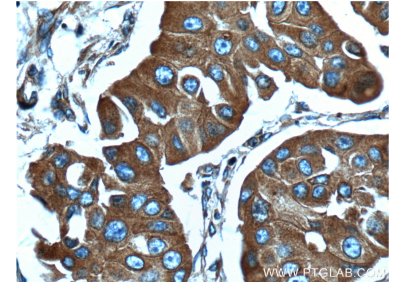
Ausgewählte Validierungsdaten



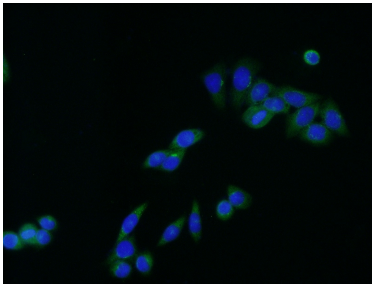
MDA-MB-453s cells were subjected to SDS PAGE followed by western blot with 20848-1-AP (C9orf86 Antibody) at dilution of 1:600 incubated at room temperature for 1.5 hours.



Immunohistochemical analysis of paraffin-embedded human breast cancer tissue slide using 20848-1-AP (C9orf86 Antibody) at dilution of 1:200 (under 10x lens). Heat mediated antigen retrieval with Tris-EDTA buffer (pH 9.0).



Immunohistochemical analysis of paraffin-embedded human breast cancer tissue slide using 20848-1-AP (C9orf86 Antibody) at dilution of 1:200 (under 40x lens). Heat mediated antigen retrieval with Tris-EDTA buffer (pH 9.0).



Immunofluorescent analysis of (-20°C Ethanol) fixed HeLa cells using 20848-1-AP (C9orf86 antibody) at dilution of 1:50 and Alexa Fluor 488-conjugated AffiniPure Goat Anti-Rabbit IgG(H+L).