

## Allgemeine Informationen

Katalog-Nr.:  
20877-1-AP

Größe:

150ul, Konzentration: 450 µg/ml von  
Nanodrop und 293 µg/ml durch die  
Bradford-Methode mit BSA als  
Standard;

Wirt:

Kaninchen

Isotyp:

IgG

Immunogen Katalognummer:

AG14976

GenBank-Zugangsnummer:

BC109033

GeneID (NCBI):

5581

Vollständiger Name:

protein kinase C, epsilon

Berechnete Masse:

737 aa, 84 kDa

Beobachtete Masse:

84 kDa

Reinigungsmethode:

Antigen-Affinitätsreinigung

Empfohlene Verdünnungen:

WB 1:5000-1:50000

IP 0.5-4.0 µg für IP und 1:500-1:1000  
für WB

IHC 1:50-1:500

IF 1:50-1:500

## Anwendungen

Geprüfte Anwendungen:

FC (Intra), IF, IHC, IP, WB, ELISA

In Publikationen genannte Anwendungen:

IF, IHC, IP, WB

Getestete Reaktivität:

Human, Maus, Ratte

Zitierte Arten:

Hamster, Human, Maus, Ratte

**Hinweis-IHC: Antigendemaskierung mit TE-  
Puffer pH 9,0 empfohlen. (\*) Wahlweise  
kann die Antigendemaskierung auch mit  
Citratpuffer pH 6,0 erfolgen.**

Positivkontrollen:

WB : Maushirngewebe, Rattenhirngewebe, SH-SY5Y-  
Zellen

IP : SH-SY5Y-Zellen,

IHC : Maushirngewebe, humanes  
Schilddrüsenkarzinomgewebe

IF : Maushirngewebe,

## Hintergrundinformationen

### Bemerkenswerte Veröffentlichungen

| Verfasser       | Pubmed ID | Journal            | Anwendung |
|-----------------|-----------|--------------------|-----------|
| Yupeng Hu       | 27649624  | Chem Biol Interact | WB        |
| Shuyan Liu      | 36158087  | Heliyon            | WB        |
| Guangming Zhang | 34470528  | Cell Transplant    | WB        |

## Lagerung

Lagerungsbedingungen:

Bei -20°C lagern. Nach dem Versand ein Jahr lang stabil

Lagerungspuffer:

PBS mit 0.02% Natriumazid und 50% Glycerin pH 7.3.

Aliquotieren ist nicht notwendig bei -20°C Lagerung

\*\*\* 20ul-Größen enthalten 0.1% BSA

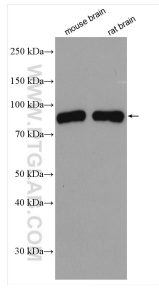
For technical support and original validation data for this product please contact:

T: 1 (888) 4PTGLAB (1-888-478-4522) (toll free  
in USA), or 1(312) 455-8498 (outside USA)

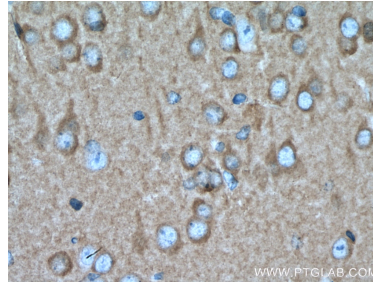
E: [proteintech@ptglab.com](mailto:proteintech@ptglab.com)  
W: [ptglab.com](http://ptglab.com)

This product is exclusively available under Proteintech  
Group brand and is not available to purchase from any  
other manufacturer.

## Ausgewählte Validierungsdaten



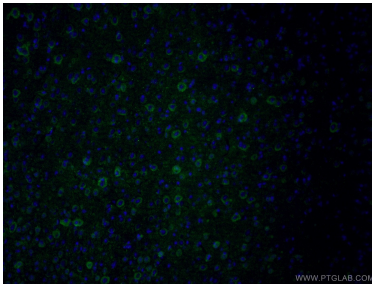
Various lysates were subjected to SDS PAGE followed by western blot with 20877-1-AP (PKC Epsilon antibody) at dilution of 1:10000 incubated at room temperature for 1.5 hours.



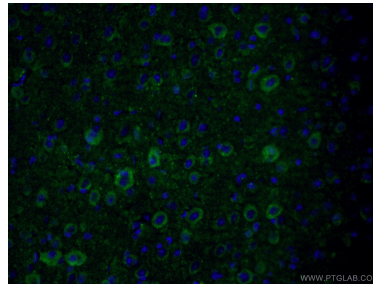
Immunohistochemical analysis of paraffin-embedded mouse brain tissue slide using 20877-1-AP (PKC epsilon antibody) at dilution of 1:200 (under 40x lens). Heat mediated antigen retrieved with Sodium Citrate buffer (pH 6.0).



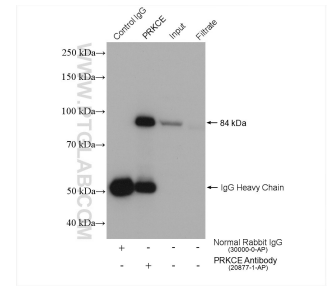
Immunohistochemical analysis of paraffin-embedded mouse brain tissue slide using 20877-1-AP (PKC epsilon antibody) at dilution of 1:200 (under 10x lens). Heat mediated antigen retrieved with Sodium Citrate buffer (pH 6.0).



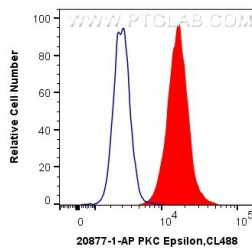
Immunofluorescent analysis of (4% PFA) fixed mouse brain tissue using 20877-1-AP (PKC epsilon antibody) at dilution of 1:50 and Alexa Fluor 488-conjugated AffiniPure Goat Anti-Rabbit IgG(H+L).



Immunofluorescent analysis of (4% PFA) fixed mouse brain tissue using 20877-1-AP (PKC epsilon antibody) at dilution of 1:50 and Alexa Fluor 488-conjugated AffiniPure Goat Anti-Rabbit IgG(H+L).



IP result of anti-PKC Epsilon (IP:20877-1-AP, 4ug; Detection:20877-1-AP 1:800) with SH-SY5Y cells lysate 1240 ug.



1x10<sup>6</sup> Jurkat cells were intracellularly stained with 0.4 ug Anti-Human PKC Epsilon (20877-1-AP) and CoraLite@488-Conjugated AffiniPure Goat Anti-Rabbit IgG(H+L) at dilution 1:1000 (red), or 0.4 ug Control Antibody. Cells were fixed with 4% PFA and permeabilized with Flow Cytometry Perm Buffer (PF00011-C).