

Nur für Forschungszwecke

Caldesmon Polyklonaler Antikörper

Katalog-Nr.:20887-1-AP

Vorgestelltes Produkt

6 Publikationen



Allgemeine Informationen

Katalog-Nr.: 20887-1-AP	GenBank-Zugangsnummer: BC040354	Reinigungsmethode: Antigen-Affinitätsreinigung
Größe: 150ul , Konzentration: 550 µg/ml von Nanodrop und 333 µg/ml durch die Bradford-Methode mit BSA als Standard;	GeneID (NCBI): 800	Empfohlene Verdünnungen: WB 1:5000-1:50000 IHC 1:1000-1:4000 IF 1:50-1:500
Wirt: Kaninchen	Vollständiger Name: caldesmon 1	
Isotyp: IgG	Berechnete Masse: 538 aa, 63 kDa	
Immunogen Katalognummer: AG13676	Beobachtete Masse: 70-80 kDa	

Anwendungen

Geprüfte Anwendungen: FC, IF, IHC, WB, ELISA	Positivkontrollen: WB : A2780-Zellen, HeLa-Zellen, HT-1080.Zellen, MDA- MB-231-Zellen, PC-3-Zellen, SKOV-3-Zellen IHC : humanes Kolongewebe, Mausherzgewebe IF : Mausherzgewebe, HeLa-Zellen
In Publikationen genannte Anwendungen: IF, IHC, WB	
Getestete Reaktivität: Human, Maus	
Zitierte Arten: Human, Maus	
Hinweis-IHC: Antigendemaskierung mit TE-Puffer pH 9,0 empfohlen. (*) Wahlweise kann die Antigendemaskierung auch mit Citratpuffer pH 6,0 erfolgen.	

Hintergrundinformationen

Caldesmon (CALD1), a protein found in the cytoskeleton, plays an important role in proliferation, apoptosis, cell motility, adhesion, receptor function, and second messenger pathways. Caldesmon is a substrate of cdc2 kinase and Erk1/2 MAPK, and phosphorylation by either of these kinases reverses the inhibitory effects of caldesmon. Caldesmon(CALD1) is a prognostic biomarker and correlated with bladder cancer(PMID: 34733993) and immune infiltrates in gastric cancers(PMID: 34189308).

Bemerkenswerte Veröffentlichungen

Verfasser	Pubmed ID	Journal	Anwendung
Jiakang Zhang	36230524	Cancers (Basel)	WB
Dongli Liang	28252009	Sci Rep	WB
Iddrisu B Yabasin	30108509	Front Physiol	WB,IF

Lagerung

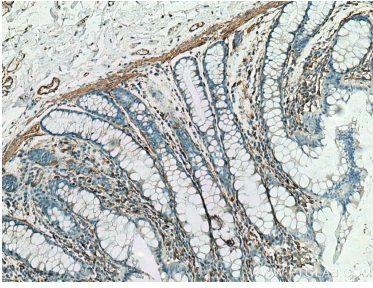
Lagerungsbedingungen:
Bei -20°C lagern. Nach dem Versand ein Jahr lang stabil
Lagerungspuffer:
PBS mit 0.02% Natriumazid und 50% Glycerin pH 7.3.
Aliquotieren ist nicht notwendig bei -20°C Lagerung

*** 20ul-Größen enthalten 0.1% BSA

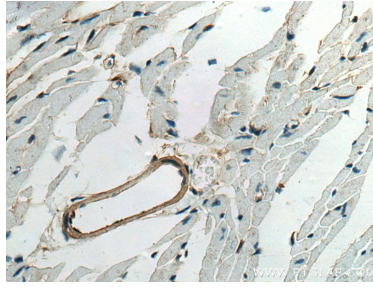
For technical support and original validation data for this product please contact:
T: 1 (888) 4PTGLAB (1-888-478-4522) (toll free in USA), or 1(312) 455-8498 (outside USA)
E: proteintech@ptglab.com
W: ptglab.com

This product is exclusively available under Proteintech Group brand and is not available to purchase from any other manufacturer.

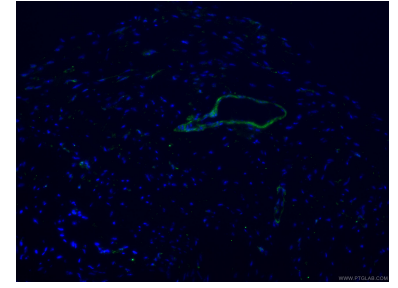
Ausgewählte Validierungsdaten



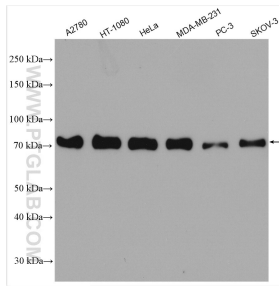
Immunohistochemical analysis of paraffin-embedded human colon tissue slide using 20887-1-AP (Caldesmon antibody) at dilution of 1:2000 (under 10x lens). Heat mediated antigen retrieval with Tris-EDTA buffer (pH 9.0).



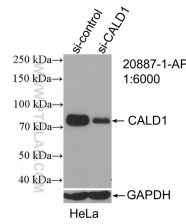
Immunohistochemical analysis of paraffin-embedded mouse heart tissue slide using 20887-1-AP (Caldesmon antibody) at dilution of 1:2000 (under 40x lens). Heat mediated antigen retrieval with Tris-EDTA buffer (pH 9.0).



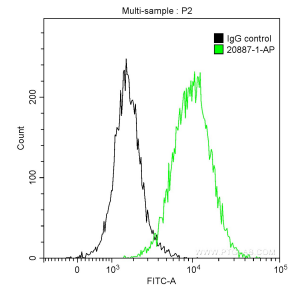
Immunofluorescent analysis of (4% PFA) fixed mouse heart tissue using 20887-1-AP (Caldesmon antibody), at dilution of 1:100 and CoraLite® 488-Conjugated AffiniPure Goat Anti-Rabbit IgG(H+L).



Various lysates were subjected to SDS PAGE followed by western blot with 20887-1-AP (Caldesmon antibody) at dilution of 1:10000 incubated at room temperature for 1.5 hours.



WB result of Caldesmon antibody (20887-1-AP; 1:6000; incubated at room temperature for 1.5 hours) with sh-Control and sh-Caldesmon transfected HeLa cells.



1×10^6 HeLa cells were intracellularly stained with 0.2 μ g Anti-Human Caldesmon (20887-1-AP) and CoraLite® 488-Conjugated AffiniPure Goat Anti-Rabbit IgG(H+L) at dilution 1:1000 (green), and 0.2 μ g Control Antibody. Cells were fixed with 90% MeOH.