

Allgemeine Informationen

Katalog-Nr.:

20966-1-AP

Größe:

150ul, Konzentration: 650 µg/ml von Nanodrop;

Wirt:

Kaninchen

Isotyp:

IgG

GenBank-Zugangsnummer:

NM_002303

GeneID (NCBI):

3953

Vollständiger Name:

leptin receptor

Berechnete Masse:

132 kDa

Beobachtete Masse:

100-150 kDa

Reinigungsmethode:

Antigen-Affinitätsreinigung

Empfohlene Verdünnungen:

WB 1:500-1:2000
IP 0.5-4.0 µg für IP und 1:500-1:1000 für WB
IHC 1:50-1:200
IF 1:10-1:100

Anwendungen

Geprüfte Anwendungen:

FC, IF, IHC, IP, WB, ELISA

In Publikationen genannte Anwendungen:

IF, IHC, IP, WB

Getestete Reaktivität:

Human, Maus

Zitierte Arten:

Human, Maus, Ratte

Hinweis-IHC: Antigendemaskierung mit TE-Puffer pH 9,0 empfohlen. (*) Wahlweise kann die Antigendemaskierung auch mit Citratpuffer pH 6,0 erfolgen.

Positivkontrollen:

WB : Mausherzgewebe, PC-3-Zellen

IP : Mausherzgewebe,

IHC : humanes Prostatahyperplasie-Gewebe, humanes Herzgewebe

IF : MCF-7-Zellen,

Hintergrundinformationen

The hormone leptin, secreted predominantly from adipose tissue, plays a crucial role in the regulation of numerous neuroendocrine functions, from energy homeostasis to reproduction (PMID: 22249808). Leptin acts through the leptin receptor (LEPR, also known as OB-R), a single-transmembrane-domain receptor of the cytokine receptor family. On ligand binding, LEPR mediates signaling through JAK2/STAT3 (PMID: 9102398). LEPR plays an important role in the regulation of glucose homeostasis via feeding and adiposity. Alternatively spliced transcript variants encoding different isoforms of LEPR have been described. This antibody can recognize long (LEPRb) and short (LEPRa,c,d) isoforms. The band at 150 kDa detected by this antibody is larger than the predicted molecular weight, probably due to glycosylation (PMID: 10026237).

Bemerkenswerte Veröffentlichungen

Verfasser	Pubmed ID	Journal	Anwendung
Yu Gao	36187750	PeerJ	WB,IHC
Paola Maroni	33213024	Biomedicines	IHC
Shintaro Sukegawa	31717278	Materials (Basel)	IHC

Lagerung

Lagerungsbedingungen:

Bei -20°C lagern. Nach dem Versand ein Jahr lang stabil

Lagerungspuffer:

PBS mit 0.02% Natriumazid und 50% Glycerin pH 7.3.

Aliquotieren ist nicht notwendig bei -20°C Lagerung

***** 20ul-Größen enthalten 0.1% BSA**

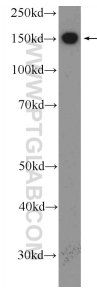
For technical support and original validation data for this product please contact:

T: 1 (888) 4PTGLAB (1-888-478-4522) (toll free in USA), or 1(312) 455-8498 (outside USA)

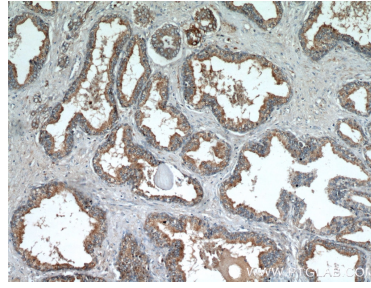
E: proteintech@ptglab.com
W: ptglab.com

This product is exclusively available under Proteintech Group brand and is not available to purchase from any other manufacturer.

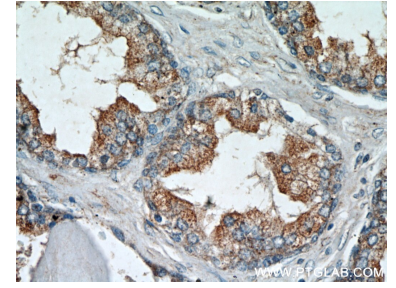
Ausgewählte Validierungsdaten



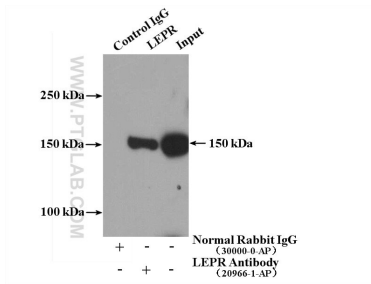
mouse heart tissue were subjected to SDS PAGE followed by western blot with 20966-1-AP (LEPR Antibody) at dilution of 1:1000 incubated at room temperature for 1.5 hours.



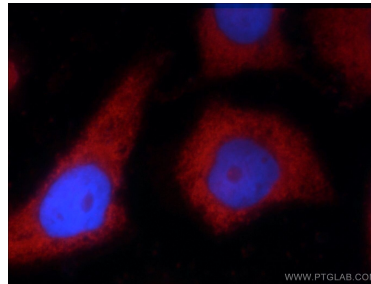
Immunohistochemical analysis of paraffin-embedded human prostate hyperplasia using 20966-1-AP (LEPR antibody) at dilution of 1:50 (under 10x lens).



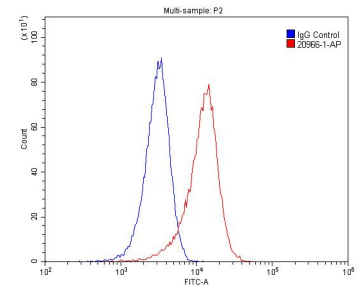
Immunohistochemical analysis of paraffin-embedded human prostate hyperplasia using 20966-1-AP (LEPR antibody) at dilution of 1:50 (under 40x lens).



IP Result of anti-LEPR (IP:20966-1-AP, 5ug; Detection:20966-1-AP 1:700) with mouse heart tissue lysate 4000ug.



Immunofluorescent analysis of MCF-7 cells using 20966-1-AP (LEPR antibody) at dilution of 1:25 and Rhodamine-Goat anti-Rabbit IgG.



1x10⁶ HeLa cells were stained with 0.2ug LEPR antibody (20966-1-AP, red) and control antibody (blue). Fixed with 4% PFA blocked with 3% BSA (30 min). Alexa Fluor 488-conjugated AffiniPure Goat Anti-Rabbit IgG(H+L) with dilution 1:1500.