

Nur für Forschungszwecke

# CRHR1 Polyklonaler Antikörper

Katalog-Nr.: 20967-1-AP

8 Publikationen



## Allgemeine Informationen

<b>Katalog-Nr.:</b> 20967-1-AP	<b>GenBank-Zugangsnummer:</b> NM_004382	<b>Reinigungsmethode:</b> Antigen-Affinitätsreinigung
<b>Größe:</b> 150ul, Konzentration: 500 µg/ml von Nanodrop;	<b>GeneID (NCBI):</b> 1394	<b>Empfohlene Verdünnungen:</b> WB 1:200-1:1000
<b>Wirt:</b> Kaninchen	<b>Vollständiger Name:</b> corticotropin releasing hormone receptor 1	
<b>Isotyp:</b> IgG	<b>Berechnete Masse:</b> 48 kDa	
	<b>Beobachtete Masse:</b> 46-55 kDa	

## Anwendungen

<b>Geprüfte Anwendungen:</b> WB, ELISA	<b>Positivkontrollen:</b> WB: HeLa-Zellen, SH-SY5Y-Zellen
<b>In Publikationen genannte Anwendungen:</b> IF, WB	
<b>Getestete Reaktivität:</b> Human	
<b>Zitierte Arten:</b> Human	

## Hintergrundinformationen

Corticotropin-releasing hormone (CRH, also known as Corticotropin-releasing factor, CRF) is a 41 amino acid peptide hormone and a key regulator of the stress response. CRH and the related urocortin peptides (UCN, UCN2 and UCN3) mediate their actions through two mammalian receptor subtypes, CRHR1 and CRHR2 (PMID: 23863939). CRHR1 (also known as CRFR1) exhibits high affinity towards CRH and UCN but low affinity towards UCN2 and no affinity towards UCN3 (PMID: 22684850). The activity of this receptor is mediated by G proteins which activate adenylyl cyclase. Widely distributed throughout the brain, CRHR1 critically controls behavioral adaptation to stress and is causally linked to emotional disorders (PMID: 21885734). Alternative splicing results in multiple transcript variants encoding distinct isoforms of CRHR1. This antibody raised against a synthesized peptide corresponding to amino acid residues 148-165 of isoform CRF-R1 can only recognize isoform CRF-R1.

## Bemerkenswerte Veröffentlichungen

Verfasser	Pubmed ID	Journal	Anwendung
Shao-Jun Chen	25146699	Proc Natl Acad Sci U S A	IF
Shuai Lian	30423388	Behav Brain Res	WB
Chunyang Zhu	31746413	Int J Mol Med	WB

## Lagerung

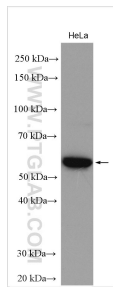
**Lagerungsbedingungen:**  
Bei -20°C lagern. Nach dem Versand ein Jahr lang stabil  
**Lagerungspuffer:**  
PBS mit 0.02% Natriumazid und 50% Glycerin pH 7.3.  
Aliquotieren ist nicht notwendig bei -20°C Lagerung

\*\*\* 20ul-Größen enthalten 0.1% BSA

For technical support and original validation data for this product please contact:  
T: 1 (888) 4PTGLAB (1-888-478-4522) (toll free in USA), or 1(312) 455-8498 (outside USA)  
E: proteintech@ptglab.com  
W: ptglab.com

This product is exclusively available under Proteintech Group brand and is not available to purchase from any other manufacturer.

## Ausgewählte Validierungsdaten



HeLa cells were subjected to SDS PAGE followed by western blot with 20967-1-AP (CRHR1 antibody) at dilution of 1:400 incubated at room temperature for 1.5 hours.