

Nur für Forschungszwecke

BRIP1(C-terminal) Polyklonaler Antikörper



Katalog-Nr.:20983-1-AP

Allgemeine Informationen

Katalog-Nr.: 20983-1-AP	GenBank-Zugangsnummer: NM_032043	Reinigungsmethode: Antigen-Affinitätsreinigung
Größe: 150ul , Konzentration: 900 µg/ml von Nanodrop und 727 µg/ml durch die Bradford-Methode mit BSA als Standard;	GeneID (NCBI): 83990	Empfohlene Verdünnungen: WB 1:500-1:1000 IHC 1:50-1:500 IF 1:10-1:100
Wirt: Kaninchen	Vollständiger Name: BRCA1 interacting protein C-terminal helicase 1	
Isotyp: IgG	Berechnete Masse: 141 kDa	
	Beobachtete Masse: 140-150 kDa	

Anwendungen

Geprüfte Anwendungen:
IF, IHC, WB, ELISA

Getestete Reaktivität:
Human

Hinweis-IHC: Antigendemaskierung mit TE-Puffer pH 9,0 empfohlen. (*) Wahlweise kann die Antigendemaskierung auch mit Citratpuffer pH 6,0 erfolgen.

Positivkontrollen:

WB: HeLa-Zellen, Jurkat-Zellen
IHC: humanes Mammakarzinomgewebe,
IF: HeLa-Zellen,

Hintergrundinformationen

BRIP1, also named as BACH1 and FANCI, belongs to the DEAD box helicase family and DEAH subfamily. It is a DNA-dependent ATPase and 5' to 3' DNA helicase required for the maintenance of chromosomal stability. It is involved in the repair of DNA double-strand breaks by homologous recombination in a manner that depends on its association with BRCA1. Defects in BRIP1 are a cause of susceptibility to breast cancer (BC). Defects in BRIP1 are the cause of Fanconi anemia complementation group J (FANCI). The antibody is specific to BRIP1.

Lagerung

Lagerungsbedingungen:

Bei -20°C lagern. Nach dem Versand ein Jahr lang stabil

Lagerungspuffer:

PBS mit 0.02% Natriumazid und 50% Glycerin pH 7.3.

Aliquotieren ist nicht notwendig bei -20°C Lagerung

***** 20ul-Größen enthalten 0.1% BSA**

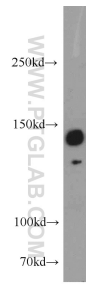
For technical support and original validation data for this product please contact:

T: 1 (888) 4PTGLAB (1-888-478-4522) (toll free in USA), or 1(312) 455-8498 (outside USA)

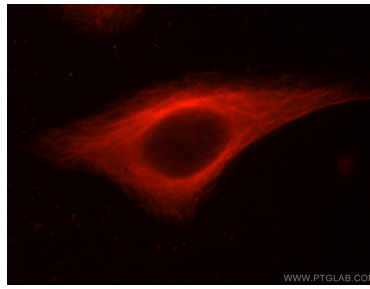
E: proteintech@ptglab.com
W: ptglab.com

This product is exclusively available under Proteintech Group brand and is not available to purchase from any other manufacturer.

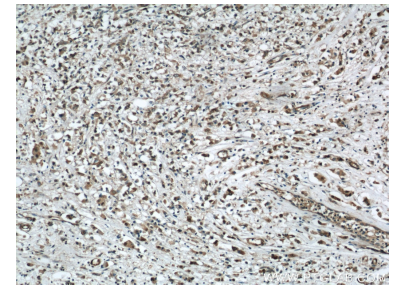
Ausgewählte Validierungsdaten



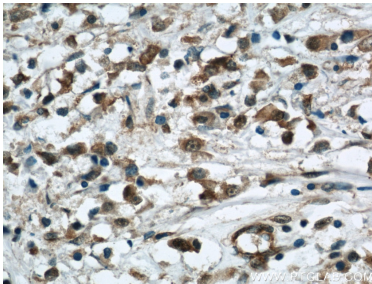
HeLa cells were subjected to SDS PAGE followed by western blot with 20983-1-AP (BRIP1 antibody) at dilution of 1:1000 incubated at room temperature for 1.5 hours.



Immunofluorescent analysis of HeLa cells using 20983-1-AP (BRIP1 antibody) at dilution of 1:25 and Rhodamine-Goat anti-Rabbit IgG.



Immunohistochemical analysis of paraffin-embedded human breast cancer using 20983-1-AP (BRIP1 antibody) at dilution of 1:50 (under 10x lens).



Immunohistochemical analysis of paraffin-embedded human breast cancer using 20983-1-AP (BRIP1 antibody) at dilution of 1:50 (under 40x lens).