

Allgemeine Informationen

Katalog-Nr.: 21039-1-AP	GenBank-Zugangsnummer: BC029870	Reinigungsmethode: Antigen-Affinitätsreinigung
Größe: 150ul, Konzentration: 300 µg/ml von Nanodrop und 233 µg/ml durch die Bradford-Methode mit BSA als Standard;	GeneID (NCBI): 122786	Empfohlene Verdünnungen: WB 1:200-1:1000 IHC 1:20-1:200
Wirt: Kaninchen	Vollständiger Name: FERM domain containing 6	
Isotyp: IgG	Berechnete Masse: 622 aa, 72 kDa	
Immunogen Katalognummer: AG15375		

Anwendungen

Geprüfte Anwendungen: FC, IHC, WB, ELISA	Positivkontrollen: WB : U-251-Zellen, IHC : humanes Leberkarzinomgewebe, humanes Lebergewebe
Getestete Reaktivität: Human, Maus, Ratte	
Hinweis-IHC: Antigenmaskierung mit TE-Puffer pH 9,0 empfohlen. (*) Wahlweise kann die Antigenmaskierung auch mit Citratpuffer pH 6,0 erfolgen.	

Hintergrundinformationen

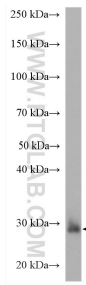
Willin, also known as FRMD6 or human Expanded (hEx), is a member of the FERM-domain family of cytoskeletal crosslinkers. It is a potent inhibitor of cell proliferation, transformation and modulator of drug sensitivity, suggesting it possesses tumor suppressor properties. Willin is widely expressed in normal tissues. Although willin is found in the cytoplasm and membrane, it localizes to the nuclei of almost all tumors. This antibody was raised against the C-terminal region of human FRMD6 protein and is expected to recognize the endogenous FRMD6.

Lagerung

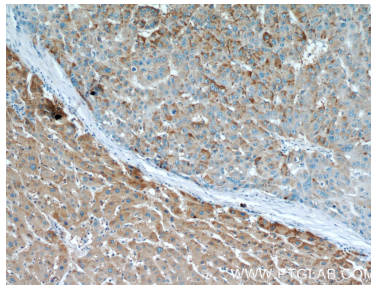
Lagerungsbedingungen:
Bei -20°C lagern. Nach dem Versand ein Jahr lang stabil
Lagerungspuffer:
PBS mit 0.02% Natriumazid und 50% Glycerin pH 7.3.
Aliquotieren ist nicht notwendig bei -20°C Lagerung

*** 20ul-Größen enthalten 0.1% BSA

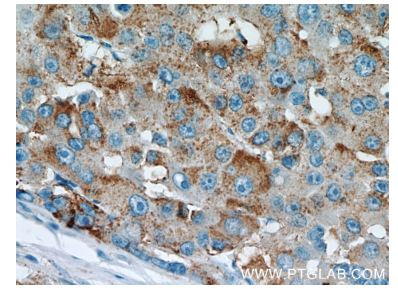
Ausgewählte Validierungsdaten



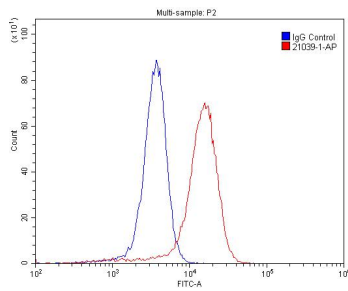
U-251 cells were subjected to SDS PAGE followed by western blot with 21039-1-AP (Willin antibody) at dilution of 1:200 incubated at room temperature for 1.5 hours.



Immunohistochemical analysis of paraffin-embedded human liver cancer using 21039-1-AP (Willin antibody) at dilution of 1:50 (under 10x lens).



Immunohistochemical analysis of paraffin-embedded human liver cancer using 21039-1-AP (Willin antibody) at dilution of 1:50 (under 40x lens).



1X10⁶ A431 cells were stained with .2ug Willin antibody (21039-1-AP, red) and control antibody (blue). Fixed with 4% PFA blocked with 3% BSA (30 min). Alexa Fluor 488-conjugated AffiniPure Goat Anti-Mouse IgG(H+L) with dilution 1:1500.