

## Allgemeine Informationen

## Katalog-Nr.:

21041-1-AP

## Größe:

150µl, Konzentration: 600 µg/ml von 150µl, Konzentration: 600 µg/ml von  
 Nanodrop und 280 µg/ml durch die  
 Bradford-Methode mit BSA als  
 Standard;

## Wirt:

Kaninchen

## Isotyp:

IgG

## Immunogen Katalognummer:

AG15377

## GenBank-Zugangsnummer:

BC020994

## GeneID (NCBI):

5371

## Vollständiger Name:

promyelocytic leukemia

## Berechnete Masse:

882 aa, 98 kDa

## Beobachtete Masse:

120 kDa

## Reinigungsmethode:

Antigen-Affinitätsreinigung

## Empfohlene Verdünnungen:

WB 1:200-1:1000  
 IP 0.5-4.0 µg für IP und 1:500-1:1000  
 für WB  
 IHC 1:100-1:400  
 IF 1:50-1:500

## Anwendungen

## Geprüfte Anwendungen:

IF, IHC, IP, WB, ELISA

## In Publikationen genannte Anwendungen:

IF, IHC, WB

## Getestete Reaktivität:

Human, Maus

## Zitierte Arten:

Human

**Hinweis-IHC: Antigendemaskierung mit TE-Puffer pH 9,0 empfohlen. (\*) Wahlweise kann die Antigendemaskierung auch mit Citratpuffer pH 6,0 erfolgen.**

## Positivkontrollen:

WB: HEK-293-Zellen, HeLa-Zellen

IP: HEK-293-Zellen,

IHC: humanes Lebergewebe,

IF: HeLa-Zellen,

## Hintergrundinformationen

PML, also named as MYL, RNF71 and TRIM19, is a member of RBCC/TRIM family of proteins that possess a RING finger domain, B-box, and coiled-coil domain. It functions as tumor suppressor. PML is required for normal, caspase-dependent apoptosis in response to DNA damage, FAS, TNF, or interferons. It plays a role in transcription regulation, DNA damage response, DNA repair and chromatin organization. PML plays a role in processes regulated by retinoic acid, regulation of cell division, terminal differentiation of myeloid precursor cells and differentiation of neural progenitor cells. It regulates PTEN compartmentalization through the inhibition of USP7-mediated deubiquitylation. A large number of alternative spliced transcripts are synthesized from the PML gene, resulting in a variety of PML proteins ranging in molecular weight from 48-97 kDa (PMID:11704850). And it can be detected as 70-130 kDa or larger due to the modification (especially SUMO) (PMID: 16778193, 22438555).

## Bemerkenswerte Veröffentlichungen

Verfasser	Pubmed ID	Journal	Anwendung
Orhi Barroso-Gomila	34795231	Nat Commun	WB,IF
Jiaojiao Shen	34763147	Mol Immunol	WB
Yang Li	32481657	Molecules	WB

## Lagerung

## Lagerungsbedingungen:

Bei -20°C lagern. Nach dem Versand ein Jahr lang stabil

## Lagerungspuffer:

PBS mit 0.02% Natriumazid und 50% Glycerin pH 7.3.

Aliquotieren ist nicht notwendig bei -20°C Lagerung

**\*\*\* 20ul-Größen enthalten 0.1% BSA**

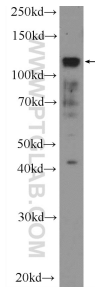
For technical support and original validation data for this product please contact:

T: 1 (888) 4PTGLAB (1-888-478-4522) (toll free in USA), or 1(312) 455-8498 (outside USA)

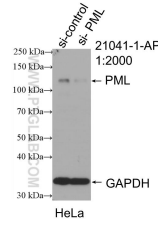
E: [proteintech@ptglab.com](mailto:proteintech@ptglab.com)  
 W: [ptglab.com](http://ptglab.com)

**This product is exclusively available under Proteintech Group brand and is not available to purchase from any other manufacturer.**

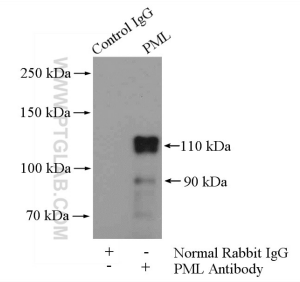
## Ausgewählte Validierungsdaten



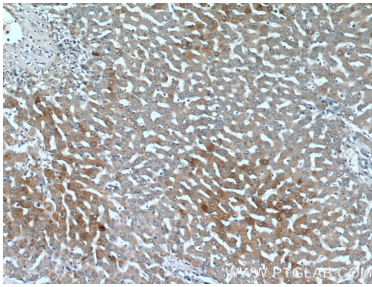
HEK-293 cells were subjected to SDS PAGE followed by western blot with 21041-1-AP (PML Antibody) at dilution of 1:300 incubated at room temperature for 1.5 hours.



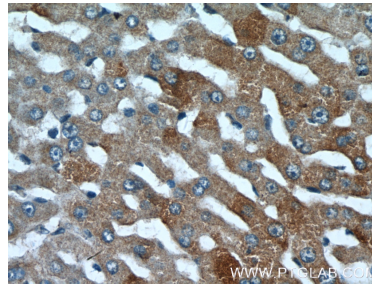
WB result of PML antibody (21041-1-AP; 1:2000; incubated at room temperature for 1.5 hours) with sh-Control and sh-PML transfected HeLa cells.



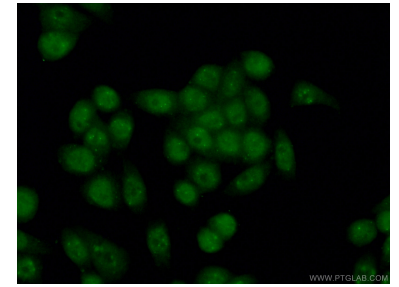
IP Result of anti-PML (IP:21041-1-AP, 4ug; Detection:21041-1-AP 1:500) with HEK-293 cells lysate 3200ug.



Immunohistochemical analysis of paraffin-embedded human liver tissue slide using 21041-1-AP (PML Antibody) at dilution of 1:200 (under 10x lens).



Immunohistochemical analysis of paraffin-embedded human liver tissue slide using 21041-1-AP (PML Antibody) at dilution of 1:200 (under 40x lens).



Immunofluorescent analysis of (10% Formaldehyde) fixed HeLa cells using 21041-1-AP (PML antibody) at dilution of 1:50 and Alexa Fluor 488-conjugated AffiniPure Goat Anti-Rabbit IgG(H+L).