

Nur für Forschungszwecke

ESRP1 Polyklonaler Antikörper

Katalog-Nr.: 21045-1-AP

Vorgestelltes Produkt

6 Publikationen



Allgemeine Informationen

Katalog-Nr.:
21045-1-AP

Größe:
150ul, Konzentration: 450 µg/ml von Nanodrop und 280 µg/ml durch die Bradford-Methode mit BSA als Standard;

Wirt:
Kaninchen

Isotyp:
IgG

Immunogen Katalognummer:
AG15386

GenBank-Zugangsnummer:
BC099916

GeneID (NCBI):
54845

Vollständiger Name:
epithelial splicing regulatory protein 1

Berechnete Masse:
681 aa, 76 kDa

Beobachtete Masse:
76 kDa

Reinigungsmethode:

Antigen-Affinitätsreinigung

Empfohlene Verdünnungen:

WB 1:500-1:2000

IP 0.5-4.0 µg für IP und 1:200-1:1000 für WB

Anwendungen

Geprüfte Anwendungen:

IP, WB, ELISA

In Publikationen genannte Anwendungen:

IF, RIP, WB

Getestete Reaktivität:

Human, Maus

Zitierte Arten:

Human

Positivkontrollen:

WB: COLO 320-Zellen, Mauslungengewebe, MCF-7-Zellen

IP: COLO 320-Zellen,

Hintergrundinformationen

ESRP1, also named as Epithelial splicing regulatory protein 1, is a 681 amino acid protein, which belongs to the ESRP family. ESRP1 as a mRNA splicing factor that regulates the formation of epithelial cell-specific isoforms. ESRP1 specifically regulates the expression of FGFR2-IIIb, an epithelial cell-specific isoform of FGFR2 and also regulates the splicing of CD44, CTNND1, ENAH, 3 transcripts that undergo changes in splicing during the epithelial-to-mesenchymal transition (EMT). ESRP1 exists various isoforms and molecular weight of each isoform is 76 kDa, 67 kDa, and 73 kDa.

Bemerkenswerte Veröffentlichungen

| Verfasser | Pubmed ID | Journal | Anwendung |
|-------------------|-----------|-------------------|-----------|
| Wei Zhao | 31570856 | Cell Death Differ | WB |
| Christina R Adams | 31134896 | Elife | WB |
| Shuo Chen | 33483472 | Cell Death Discov | WB |

Lagerung

Lagerungsbedingungen:

Bei -20°C lagern. Nach dem Versand ein Jahr lang stabil

Lagerungspuffer:

PBS mit 0.02% Natriumazid und 50% Glycerin pH 7.3.

Aliquotieren ist nicht notwendig bei -20°C Lagerung

*** 20ul-Größen enthalten 0.1% BSA

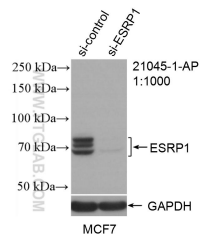
For technical support and original validation data for this product please contact:

T: 1 (888) 4PTGLAB (1-888-478-4522) (toll free in USA), or 1(312) 455-8498 (outside USA)

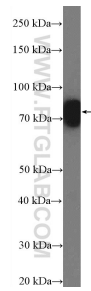
E: proteintech@ptglab.com
W: ptglab.com

This product is exclusively available under Proteintech Group brand and is not available to purchase from any other manufacturer.

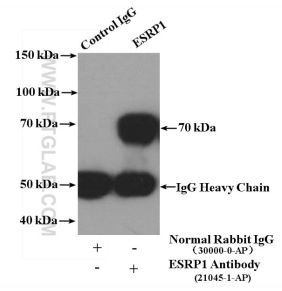
Ausgewählte Validierungsdaten



WB result of ESRP1 antibody (21045-1-AP; 1:1000; incubated at room temperature for 1.5 hours) with sh-Control and sh-ESRP1 transfected MCF-7 cells.



COLO 320 cells were subjected to SDS PAGE followed by western blot with 21045-1-AP (ESRP1 Antibody) at dilution of 1:1000 incubated at room temperature for 1.5 hours.



IP Result of anti-ESRP1 (IP:21045-1-AP, 4ug; Detection:21045-1-AP 1:300) with COLO 320 cells lysate 4000ug.