

Nur für Forschungszwecke

EPCAM/CD326 Polyklonaler Antikörper



Katalog-Nr.: 21050-1-AP

Vorgestelltes Produkt

51 Publikationen

Allgemeine Informationen

Katalog-Nr.: 21050-1-AP	GenBank-Zugangsnummer: BC014785	Reinigungsmethode: Antigen-Affinitätsreinigung
Größe: 150ul, Konzentration: 500 µg/ml von Nanodrop;	GeneID (NCBI): 4072	Empfohlene Verdünnungen: WB 1:500-1:2000 IHC 1:500-1:2000 IF 1:50-1:500
Wirt: Kaninchen	Vollständiger Name: epithelial cell adhesion molecule	
Isotyp: IgG	Berechnete Masse: 314 aa, 35 kDa	
Immunogen Katalognummer: AG15393	Beobachtete Masse: 35-40 kDa	

Anwendungen

Geprüfte Anwendungen:

FC, IF, IHC, WB, ELISA

In Publikationen genannte Anwendungen:

chIP, FC, IF, IHC, WB

Getestete Reaktivität:

Human, Maus

Zitierte Arten:

Human, Maus, Ratte

Positivkontrollen:

WB: A431-Zellen, Maus-Kolongewebe, MCF-7-Zellen

IHC: humanes Kolonkarzinomgewebe, humanes Kolongewebe, humanes Mammakarzinomgewebe, Maus-Kolongewebe, Maus-Magengewebe

IF: MCF-7-Zellen, humanes Kolonkarzinomgewebe

Hinweis-IHC: Antigenmaskierung mit TE-Puffer pH 9,0 empfohlen. (*) Wahlweise kann die Antigenmaskierung auch mit Citratpuffer pH 6,0 erfolgen.

Hintergrundinformationen

Epithelial cell adhesion molecule (EpCAM, CD326) is a type I transmembrane glycoprotein that functions as a homophilic, epithelial-specific intercellular cell-adhesion molecule. In addition to cell adhesion, EpCAM is also involved in cellular signaling, cell migration, proliferation, and differentiation. EpCAM is highly expressed on most carcinomas and therefore of potential use as a diagnostic and prognostic marker for a variety of carcinomas, and has become a therapeutic target. EpCAM may occur in distinct forms due to glycosylation. (PMID: 20837599; 19249674; 21576002; 22647938; 12691820)

Bemerkenswerte Veröffentlichungen

Verfasser	Pubmed ID	Journal	Anwendung
Xue Liu	30246502	J Cell Physiol	WB,IHC,IF
Chaoqun Liu	34551797	J Exp Clin Cancer Res	WB,IF
Haiyong Wang	27432228	Mol Med Rep	WB,IHC

Lagerung

Lagerungsbedingungen:

Bei -20°C lagern. Nach dem Versand ein Jahr lang stabil

Lagerungspuffer:

PBS mit 0.02% Natriumazid und 50% Glycerin pH 7.3.

Aliquotieren ist nicht notwendig bei -20°C Lagerung

*** 20ul-Größen enthalten 0.1% BSA

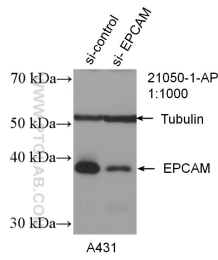
For technical support and original validation data for this product please contact:

T: 1 (888) 4PTGLAB (1-888-478-4522) (toll free in USA), or 1(312) 455-8498 (outside USA)

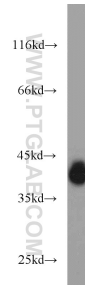
E: proteintech@ptglab.com
W: ptglab.com

This product is exclusively available under Proteintech Group brand and is not available to purchase from any other manufacturer.

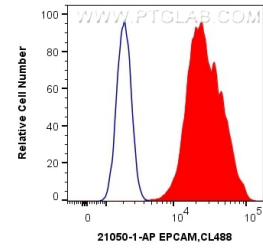
Ausgewählte Validierungsdaten



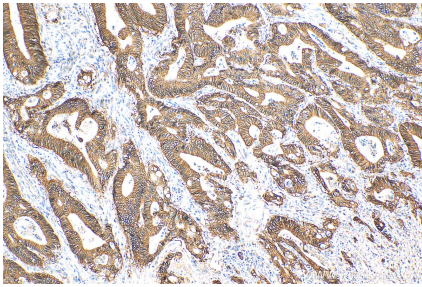
WB result of EPCAM antibody (21050-1-AP; 1:1000; incubated at room temperature for 1.5 hours) with sh-Control and sh-EPCAM transfected A431 cells.



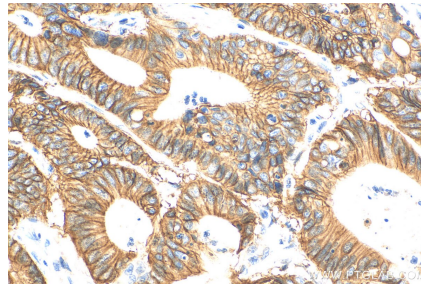
A431 cells were subjected to SDS PAGE followed by western blot with 21050-1-AP (EPCAM antibody) at dilution of 1:1000 incubated at room temperature for 1.5 hours.



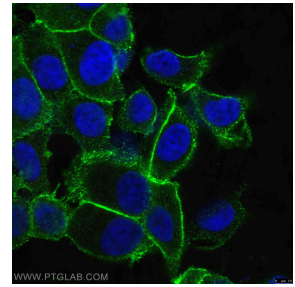
1×10^6 HT-29 cells were surface stained with 0.5 μ g Anti-Human EPCAM/CD326 (21050-1-AP) and CoraLite@488-Conjugated AffiniPure Goat Anti-Rabbit IgG(H+L) at dilution 1:1000 (red), or 0.5 μ g Control Antibody. Cells were not fixed.



Immunohistochemical analysis of paraffin-embedded human colon cancer tissue slide using 21050-1-AP (EPCAM/CD326 antibody) at dilution of 1:1000 (under 10x lens). Heat mediated antigen retrieval with Tris-EDTA buffer (pH 9.0).



Immunohistochemical analysis of paraffin-embedded human colon cancer tissue slide using 21050-1-AP (EPCAM/CD326 antibody) at dilution of 1:1000 (under 40x lens). Heat mediated antigen retrieval with Tris-EDTA buffer (pH 9.0).



Immunofluorescent analysis of (4% PFA) fixed MCF-7 cells using 21050-1-AP (EPCAM antibody) at dilution of 1:100 and CoraLite488-Conjugated AffiniPure Goat Anti-Rabbit IgG(H+L).