

## Allgemeine Informationen

<b>Katalog-Nr.:</b> 21072-1-AP	<b>GenBank-Zugangsnummer:</b> BC090859	<b>Reinigungsmethode:</b> Antigen-Affinitätsreinigung
<b>Größe:</b> 150ul, Konzentration: 707 µg/ml durch die Bradford-Methode mit BSA als Standard;	<b>GeneID (NCBI):</b> 4215	<b>Empfohlene Verdünnungen:</b> WB 1:200-1:1000 IP 0.5-4.0 µg für IP und 1:200-1:1000 für WB IHC 1:50-1:500
<b>Wirt:</b> Kaninchen	<b>Vollständiger Name:</b> mitogen-activated protein kinase kinase kinase 3	
<b>Isotyp:</b> IgG	<b>Berechnete Masse:</b> 657 aa, 74 kDa	
<b>Immunogen Katalognummer:</b> AG15223	<b>Beobachtete Masse:</b> 71 kDa, 74 kDa	

## Anwendungen

<b>Geprüfte Anwendungen:</b> IHC, IP, WB, ELISA	<b>Positivkontrollen:</b> WB : Mauslebergewebe, IP : Mauslebergewebe, IHC : humanes Leberkarzinomgewebe,
<b>In Publikationen genannte Anwendungen:</b> IF, IP, WB	
<b>Getestete Reaktivität:</b> Human	
<b>Zitierte Arten:</b> Human, Maus	
<b>Hinweis-IHC: Antigenmaskierung mit TE-Puffer pH 9,0 empfohlen. (*) Wahlweise kann die Antigenmaskierung auch mit Citratpuffer pH 6,0 erfolgen.</b>	

## Hintergrundinformationen

The mitogen-activated protein/ERK kinase kinase 3 (MEKK3) is a member of a family of MEKK/Ste11 serine/threonine protein kinases. One function of MEKK3 is to serve as an upstream regulatory kinase in the mitogen-activated protein kinase cascade, however, it also plays a critical role in other signaling pathways. MEKK3 regulates several important functions including cell survival and proliferation. It is ubiquitously expressed in multiple tissues and has been found in complexes with scaffold proteins and other kinases. (PMID: 18206350). Cerebral cavernous malformations (CCMs) complex regulation of MEKK3 is essential during vertebrate heart development. MEKK3 signalling and KLF2/4 may be targeted to develop new CCM therapeutics.

## Bemerkenswerte Veröffentlichungen

Verfasser	Pubmed ID	Journal	Anwendung
Jinjiu Lu	29662197	Oncogene	WB, IF, IP

## Lagerung

**Lagerungsbedingungen:**  
Bei -20°C lagern. Nach dem Versand ein Jahr lang stabil

**Lagerungspuffer:**  
PBS mit 0.02% Natriumazid und 50% Glycerin pH 7.3.

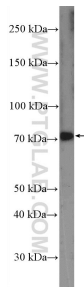
Aliquotieren ist nicht notwendig bei -20°C Lagerung

\*\*\* 20ul-Größen enthalten 0.1% BSA

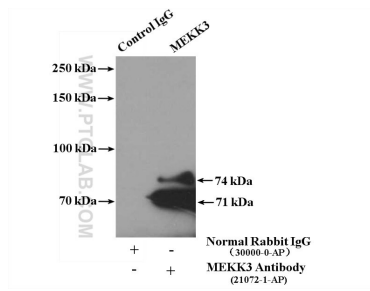
For technical support and original validation data for this product please contact:  
 T: 1 (888) 4PTGLAB (1-888-478-4522) (toll free in USA), or 1(312) 455-8498 (outside USA)  
 E: [proteintech@ptglab.com](mailto:proteintech@ptglab.com)  
 W: [ptglab.com](http://ptglab.com)

This product is exclusively available under Proteintech Group brand and is not available to purchase from any other manufacturer.

## Ausgewählte Validierungsdaten

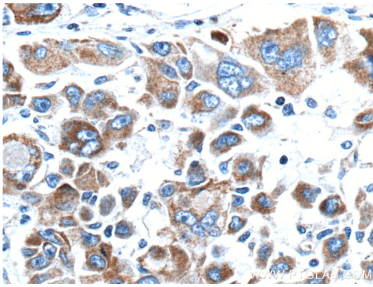


mouse liver tissue were subjected to SDS PAGE followed by western blot with 21072-1-AP (MEK3 antibody at dilution of 1:300 incubated at room temperature for 1.5 hours.



IP Result of anti-MEK3 (IP:21072-1-AP, 4ug; Detection:21072-1-AP 1:300) with mouse liver tissue lysate 7000ug.

Immunohistochemical analysis of paraffin-embedded human liver cancer tissue slide using 21072-1-AP (MEK3 antibody at dilution of 1:200 (under 10x lens). Heat mediated antigen retrieval with Tris-EDTA buffer (pH 9.0).



Immunohistochemical analysis of paraffin-embedded human liver cancer tissue slide using 21072-1-AP (MEK3 antibody at dilution of 1:200 (under 40x lens). Heat mediated antigen retrieval with Tris-EDTA buffer (pH 9.0).