

## Allgemeine Informationen

**Katalog-Nr.:**

21115-1-AP

**Größe:**

150ul, Konzentration: 500 µg/ml von Nanodrop;

**Wirt:**

Kaninchen

**Isotyp:**

IgG

**Immunogen Katalognummer:**

AG15455

**GenBank-Zugangsnummer:**

BC048094

**GeneID (NCBI):**

59272

**Vollständiger Name:**

angiotensin I converting enzyme (peptidyl-dipeptidase A) 2

**Berechnete Masse:**

805 aa, 92 kDa

**Beobachtete Masse:**

120 kDa, 92 kDa

**Reinigungsmethode:**

Antigen-Affinitätsreinigung

**Empfohlene Verdünnungen:**
WB 1:500-1:2000  
IP 0.5-4.0 µg für IP und 1:500-1:2000 für WB  
IHC 1:500-1:1000  
IF 1:50-1:500

## Anwendungen

**Geprüfte Anwendungen:**

FC, IF, IHC, IP, WB, ELISA

**In Publikationen genannte Anwendungen:**

CoIP, FC, IF, IHC, IP, WB

**Getestete Reaktivität:**

Human, Maus, Ratte

**Zitierte Arten:**

Human, Maus, Ratte

**Positivkontrollen:**
**WB:** Mausnierengewebe, humanes Skelettmuskelgewebe

**IP:** Mausnierengewebe,

**IHC:** humanes Nierengewebe, humanes Dünndarmgewebe, Mauthodengewebe

**IF:** humanes Nierengewebe, Mausnierengewebe

**Hinweis-IHC: Antigenmaskierung mit TE-Puffer pH 9,0 empfohlen. (\*) Wahlweise kann die Antigenmaskierung auch mit Citratpuffer pH 6,0 erfolgen.**

## Hintergrundinformationen

ACE2 (Angiotensin-converting enzyme 2), also named as ACEH, is a zinc metalloprotease of the ACE family and a critical regulator of the reninangiotensin system. ACE2 has a more restricted tissue distribution than ACE, being found predominantly in the heart, kidneys, and testes although low levels have been detected in a variety of tissues (PMID:15983030). ACE2 has been shown to be a functional receptor of the human coronaviruses SARS-CoV and SARS-CoV-2 (PMID: 32142651). The expression level and expression pattern of human ACE2 in different tissues might be critical for the susceptibility, symptoms, and outcome of 2019-nCoV/SARS-CoV-2 infection (PMID: 32133153). It can be used as a potential therapeutic target of SARS-CoV-2 (PMID: 32125455). The calculated molecular weight of ACE2 is 92kDa but it migrates to 120kDa due to N-glycosylation (PMID:16166094). Sometimes, several cleaved fragments can also be detected as 75kDa, 50 kDa or 37kDa (PMID: 29561187, 22009550, 30759273). It has 2 isoforms produced by alternative splicing. This antibody is specific to ACE2. The location of ACE2 is membrane and cytoplasm, however it accumulates in the nucleus during the mitosis (PMID: 1730413/PMID: 18292088).

## Bemerkenswerte Veröffentlichungen

Verfasser	Pubmed ID	Journal	Anwendung
Shunhua Long	36178477	Viral Immunol	FC
Chang-Ki Oh	36175661	Nat Chem Biol	WB,IF
Zemin Zhu	36175845	BMC Mol Cell Biol	WB

## Lagerung

**Lagerungsbedingungen:**

Bei -20°C lagern. Nach dem Versand ein Jahr lang stabil

**Lagerungspuffer:**

PBS mit 0.02% Natriumazid und 50% Glycerin pH 7.3.

Aliquotieren ist nicht notwendig bei -20°C Lagerung

**\*\*\* 20ul-Größen enthalten 0.1% BSA**

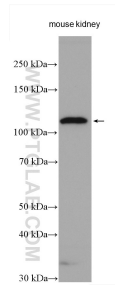
For technical support and original validation data for this product please contact:

T: 1 (888) 4PTGLAB (1-888-478-4522) (toll free in USA), or 1(312) 455-8498 (outside USA)

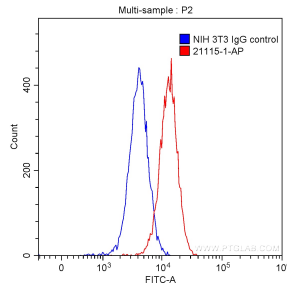
E: [proteintech@ptglab.com](mailto:proteintech@ptglab.com)  
 W: [ptglab.com](http://ptglab.com)

**This product is exclusively available under Proteintech Group brand and is not available to purchase from any other manufacturer.**

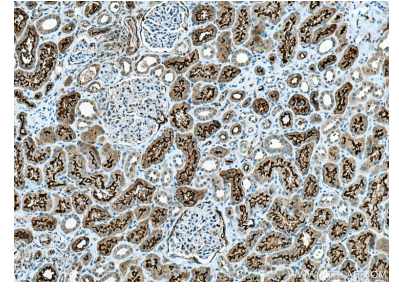
## Ausgewählte Validierungsdaten



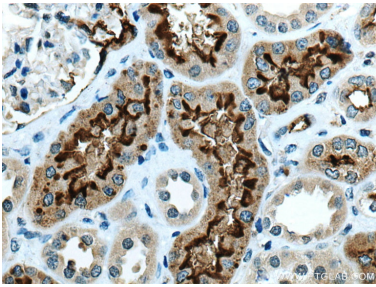
mouse kidney tissue lysates were subjected to SDS PAGE followed by western blot with 21115-1-AP (ACE2 antibody) at dilution of 1:1000 incubated at room temperature for 1.5 hours.



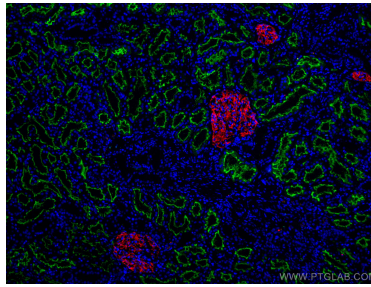
$1 \times 10^6$  NIH/3T3 cells were stained with 0.20 ug/test Anti-Human ACE2 (21115-1-AP) (red) or 0.20 ug control antibody (blue) and CoraLite®488-Conjugated AffiniPure Goat Anti-Rabbit IgG(H+L) with dilution 1:1000. Fixed with 90% MeOH.



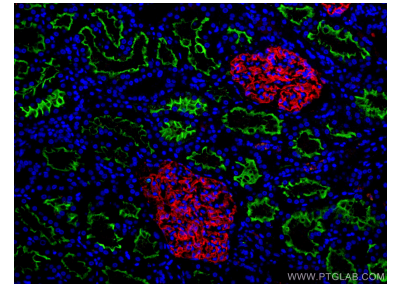
Immunohistochemical analysis of paraffin-embedded human kidney tissue slide using 21115-1-AP (ACE2 antibody) at dilution of 1:1000 (under 10x lens). Heat mediated antigen retrieval with Tris-EDTA buffer (pH 9.0).



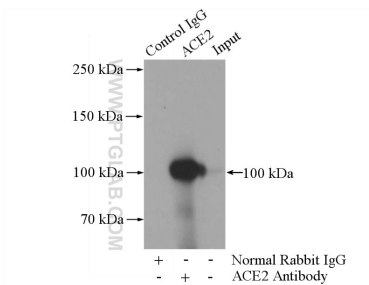
Immunohistochemical analysis of paraffin-embedded human kidney tissue slide using 21115-1-AP (ACE2 antibody) at dilution of 1:1000 (under 40x lens). Heat mediated antigen retrieval with Tris-EDTA buffer (pH 9.0).



Immunofluorescent analysis of (4% PFA) fixed human kidney tissue using ACE2 antibody (21115-1-AP) at dilution of 1:200 and CoraLite®488-Conjugated AffiniPure Goat Anti-Rabbit IgG(H+L), PTPRO antibody (67000-1-Ig, Clone: 2F2B4, red).



Immunofluorescent analysis of (4% PFA) fixed human kidney tissue using ACE2 antibody (21115-1-AP) at dilution of 1:200 and CoraLite®488-Conjugated AffiniPure Goat Anti-Rabbit IgG(H+L), PTPRO antibody (67000-1-Ig, Clone: 2F2B4, red).



IP Result of anti-ACE2 (IP:21115-1-AP, 5ug; Detection:21115-1-AP 1:1000) with mouse kidney tissue lysate 4000ug.