

Nur für Forschungszwecke

SLITRK6 Polyklonaler Antikörper

Katalog-Nr.: 21150-1-AP



Allgemeine Informationen

Katalog-Nr.: 21150-1-AP	GenBank-Zugangsnummer: BC101070	Reinigungsmethode: Antigen-Affinitätsreinigung
Größe: 150ul, Konzentration: 400 µg/ml von Nanodrop und 347 µg/ml durch die Bradford-Methode mit BSA als Standard;	GeneID (NCBI): 84189	Empfohlene Verdünnungen: WB 1:500-1:2000 IF 1:10-1:100
Wirt: Kaninchen	Vollständiger Name: SLIT and NTRK-like family, member 6	
Isotyp: IgG	Berechnete Masse: 841 aa, 95 kDa	
Immunogen Katalognummer: AG15701	Beobachtete Masse: 95-100 kDa	

Anwendungen

Geprüfte Anwendungen: FC, IF, WB, ELISA	Positivkontrollen: WB : A549-Zellen, Mauslungengewebe IF : HepG2-Zellen,
Getestete Reaktivität: Human, Maus, Ratte	

Hintergrundinformationen

SLITRK6 is a member of the SLITRK family. Members of this family are integral membrane proteins that are characterized by two N-terminal leucine-rich repeat (LRR) domains and a C-terminal region that shares homology with trk neurotrophin receptors. This protein functions as a regulator of neurite outgrowth required for normal hearing and vision. Mutations in SLITRK6 gene are a cause of myopia and deafness.

Lagerung

Lagerungsbedingungen:
Bei -20°C lagern. Nach dem Versand ein Jahr lang stabil
Lagerungspuffer:
PBS mit 0.02% Natriumazid und 50% Glycerin pH 7.3.
Aliquotieren ist nicht notwendig bei -20°C Lagerung

*** 20ul-Größen enthalten 0.1% BSA

For technical support and original validation data for this product please contact:

T: 1 (888) 4PTGLAB (1-888-478-4522) (toll free
in USA), or 1(312) 455-8498 (outside USA)

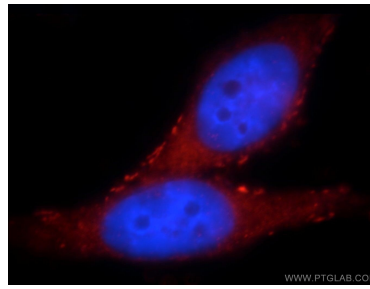
E: proteintech@ptglab.com
W: ptglab.com

This product is exclusively available under Proteintech Group brand and is not available to purchase from any other manufacturer.

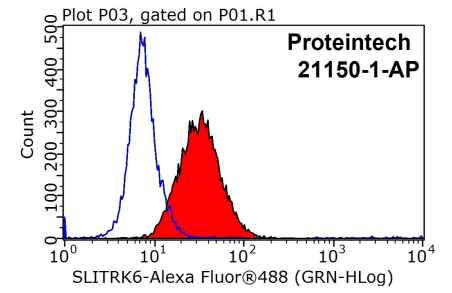
Ausgewählte Validierungsdaten



A549 cells were subjected to SDS PAGE followed by western blot with 21150-1-AP (SLITRK6 antibody) at dilution of 1:500 incubated at room temperature for 1.5 hours.



Immunofluorescent analysis of HepG2 cells, using SLITRK6 antibody 21150-1-AP at 1:25 dilution and Rhodamine-labeled goat anti-rabbit IgG (red). Blue pseudocolor = DAPI (fluorescent DNA dye).



1×10^6 HepG2 cells were stained with 0.2ug SLITRK6 antibody (21150-1-AP, red) and control antibody (blue). Fixed with 90% MeOH blocked with 3% BSA (30 min). Alexa Fluor 488-conjugated AffiniPure Goat Anti-Rabbit IgG(H+L) with dilution 1:1000.