

Nur für Forschungszwecke

# KIR2DS4 Polyklonaler Antikörper

Katalog-Nr.: 21152-1-AP



## Allgemeine Informationen

<b>Katalog-Nr.:</b> 21152-1-AP	<b>GenBank-Zugangsnummer:</b> BC096694	<b>Reinigungsmethode:</b> Antigen-Affinitätsreinigung
<b>Größe:</b> 150ul, Konzentration: 533 µg/ml durch die Bradford-Methode mit BSA als Standard;	<b>GeneID (NCBI):</b> 3809	<b>Empfohlene Verdünnungen:</b> WB 1:1000-1:4000 IF 1:10-1:100
<b>Wirt:</b> Kaninchen	<b>Vollständiger Name:</b> killer cell immunoglobulin-like receptor, two domains, short cytoplasmic tail, 4	
<b>Isotyp:</b> IgG	<b>Berechnete Masse:</b> 304 aa, 34 kDa	
<b>Immunogen Katalognummer:</b> AG15711	<b>Beobachtete Masse:</b> 33 kDa	

## Anwendungen

<b>Geprüfte Anwendungen:</b> IF, WB, ELISA	<b>Positivkontrollen:</b> WB : HL-60-Zellen, Jurkat-Zellen
<b>Getestete Reaktivität:</b> Human	<b>IF :</b> HepG2-Zellen,

## Hintergrundinformationen

KIR2DS4 (also known as CD158i) is a member of the killer cell immunoglobulin-like receptor (KIR) family. KIRs are transmembrane glycoproteins expressed by natural killer cells and subsets of T cells. KIRs are mainly involved in inhibiting NK killing (inhibitory KIRs) via interaction with MHC class I molecules. KIR2DS4 has been reported to be an activating KIR and recognize the HLA-Cw4 protein.

## Lagerung

**Lagerungsbedingungen:**  
Bei -20°C lagern. Nach dem Versand ein Jahr lang stabil  
**Lagerungspuffer:**  
PBS mit 0.02% Natriumazid und 50% Glycerin pH 7.3.  
Aliquotieren ist nicht notwendig bei -20°C Lagerung

**\*\*\* 20ul-Größen enthalten 0.1% BSA**

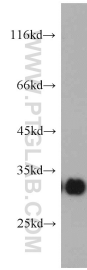
For technical support and original validation data for this product please contact:

T: 1 (888) 4PTGLAB (1-888-478-4522) (toll free  
in USA), or 1(312) 455-8498 (outside USA)

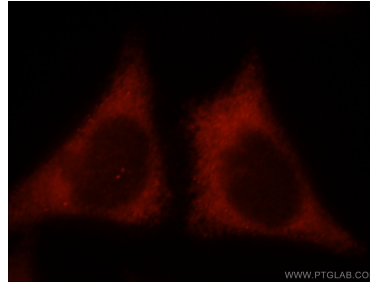
E: [proteintech@ptglab.com](mailto:proteintech@ptglab.com)  
W: [ptglab.com](http://ptglab.com)

**This product is exclusively available under Proteintech Group brand and is not available to purchase from any other manufacturer.**

## Ausgewählte Validierungsdaten



HL-60 cells were subjected to SDS PAGE followed by western blot with 21152-1-AP (KIR2DS4 antibody) at dilution of 1:500 incubated at room temperature for 1.5 hours.



Immunofluorescent analysis of HepG2 cells, using KIR2DS4 antibody 21152-1-AP at 1:25 dilution and Rhodamine-labeled goat anti-rabbit IgG (red).