

## Allgemeine Informationen

<b>Katalog-Nr.:</b> 21187-1-AP	<b>GenBank-Zugangsnummer:</b> BC150184	<b>Reinigungsmethode:</b> Antigen-Affinitätsreinigung
<b>Größe:</b> 150ul, Konzentration: 600 µg/ml von Nanodrop;	<b>GeneID (NCBI):</b> 604	<b>Empfohlene Verdünnungen:</b> WB 1:500-1:3000 IP 0.5-4.0 µg für IP und 1:500-1:2000 für WB IHC 1:200-1:800
<b>Wirt:</b> Kaninchen	<b>Vollständiger Name:</b> B-cell CLL/Lymphoma 6	
<b>Isotyp:</b> IgG	<b>Berechnete Masse:</b> 706 aa, 79 kDa	
<b>Immunogen Katalognummer:</b> AG15519	<b>Beobachtete Masse:</b> 79-95 kDa	

## Anwendungen

<b>Geprüfte Anwendungen:</b> FC, IHC, IP, WB, ELISA	<b>Positivkontrollen:</b> WB: Raji-Zellen, IP: Raji-Zellen, IHC: humanes Tonsillitisgewebe, humanes Lymphomgewebe
<b>In Publikationen genannte Anwendungen:</b> IHC, WB	
<b>Getestete Reaktivität:</b> Human	
<b>Zitierte Arten:</b> Human, Maus	

**Hinweis-IHC: Antigendemaskierung mit TE-Puffer pH 9,0 empfohlen. (\*) Wahlweise kann die Antigendemaskierung auch mit Citratpuffer pH 6,0 erfolgen.**

## Hintergrundinformationen

BCL6, a zinc finger transcription factor, contains a N-terminal BTB/POZ domain and C-terminal zinc finger DNA-binding motifs and represses transcription of a wide range of target proteins and microRNAs. BCL6 protein has been reported as a master regulator of B lymphocyte development and growth, and altered BCL6 protein expression was implicated in pathogenesis of diverse human hematologic malignancies, especially in the diffuse large B cell lymphoma (DLBCL). BCL6 is required for the development of T follicular helper T cells (TFH), a helper T cell subset required for the formation of mature and productive GCs. BCL6 has also been shown to play important regulatory roles in macrophages.

## Bemerkenswerte Veröffentlichungen

Verfasser	Pubmed ID	Journal	Anwendung
Ranran Sun	33008587	Biochem Biophys Res Commun	WB
Shuang Zhang	34558634	Mol Med Rep	WB
Lai Chen	33191180	Int Immunopharmacol	WB

## Lagerung

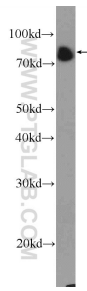
**Lagerungsbedingungen:**  
Bei -20°C lagern. Nach dem Versand ein Jahr lang stabil  
**Lagerungspuffer:**  
PBS mit 0.02% Natriumazid und 50% Glycerin pH 7.3.  
 Aliquotieren ist nicht notwendig bei -20°C Lagerung

**\*\*\* 20ul-Größen enthalten 0.1% BSA**

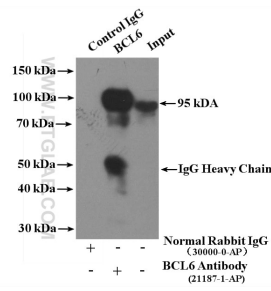
For technical support and original validation data for this product please contact:  
 T: 1 (888) 4PTGLAB (1-888-478-4522) (toll free in USA), or 1(312) 455-8498 (outside USA)  
 E: [proteintech@ptglab.com](mailto:proteintech@ptglab.com)  
 W: [ptglab.com](http://ptglab.com)

**This product is exclusively available under Proteintech Group brand and is not available to purchase from any other manufacturer.**

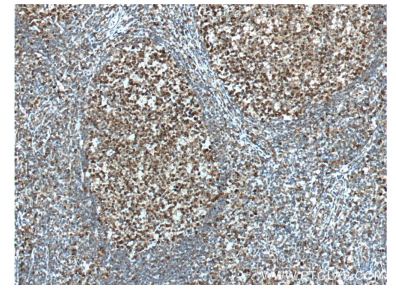
## Ausgewählte Validierungsdaten



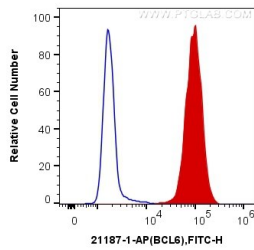
Raji cells were subjected to SDS PAGE followed by western blot with 21187-1-AP (BCL6 Antibody) at dilution of 1:1500 incubated at room temperature for 1.5 hours.



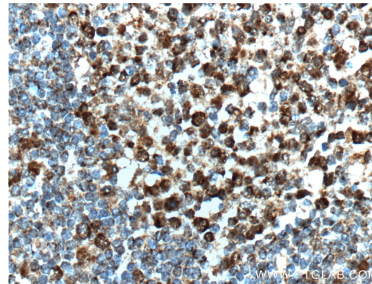
IP Result of anti-BCL6 (IP:21187-1-AP, 4ug; Detection:21187-1-AP 1:1000) with Raji cells lysate 1400ug.



Immunohistochemical analysis of paraffin-embedded human tonsillitis tissue slide using 21187-1-AP (BCL6 Antibody) at dilution of 1:400 (under 10x lens). Heat mediated antigen retrieved with Sodium Citrate buffer (pH 6.0).



1X10<sup>6</sup> Ramos cells were intracellularly stained with 0.2 ug Anti-Human BCL6 (21187-1-AP) and CoraLite@488-Conjugated AffiniPure Goat Anti-Rabbit IgG(H+L) at dilution 1:1000 (red), or 0.2 ug Control Antibody. Cells were fixed and permeabilized with Transcription Factor Staining Buffer Kit (PF00011).



Immunohistochemical analysis of paraffin-embedded human tonsillitis tissue slide using 21187-1-AP (BCL6 Antibody) at dilution of 1:400 (under 40x lens). Heat mediated antigen retrieved with Sodium Citrate buffer (pH 6.0).