

Allgemeine Informationen

Katalog-Nr.: 21207-1-AP	GenBank-Zugangsnummer: BC150180	Reinigungsmethode: Antigen-Affinitätsreinigung
Größe: 150ul, Konzentration: 800 µg/ml von Nanodrop;	GeneID (NCBI): 54790	Empfohlene Verdünnungen: WB 1:500-1:2000 IP 0.5-4.0 µg für IP und 1:500-1:1000 für WB
Wirt: Kaninchen	Vollständiger Name: tet oncogene family member 2	IHC 1:250-1:1000 IF 1:50-1:500
Isotyp: IgG	Berechnete Masse: 2002 aa, 224 kDa	
Immunogen Katalognummer: AG15583	Beobachtete Masse: 130 kDa, 250 kDa	

Anwendungen

Geprüfte Anwendungen:

IF, IHC, IP, WB, ELISA

In Publikationen genannte Anwendungen:

ChIP, CoIP, IF, IHC, WB

Getestete Reaktivität:

Human, Maus

Zitierte Arten:

Human, Maus, Ziege

Positivkontrollen:

WB: A431-Zellen, HEK-293-Zellen, HeLa-Zellen, HepG2-Zellen, HL-60-Zellen, K-562-Zellen**IP:** Moushirngewebe,**IHC:** humanes Kolonkarzinomgewebe,**IF:** Neuro-2a-Zellen,

Hinweis-IHC: Antigenmaskierung mit TE-Puffer pH 9,0 empfohlen. (*) Wahlweise kann die Antigenmaskierung auch mit Citratpuffer pH 6,0 erfolgen.

Hintergrundinformationen

TET2 is an enzyme which converts 5-methylcytosine (5-mC) to 5-hydroxymethylcytosine (5-hmC) in DNA and is important for normal myelopoiesis. TET2 mutations are frequently observed in myeloid malignancies, including myeloproliferative neoplasms. TET2 is broadly expressed in a variety of tissues. In healthy tissues, TET2 expression was shown to be elevated in hematopoietic cells with highest expression in granulocytes. Three isoforms of TET2 exists due to the alternative splicing. 220-250 kDa bands represent the full-length isoform; 130-133 kDa bands represent the nuclear isoforms of TET2. (PMID: 24615693) This antibody recognizes all three isoforms of TET2.

Bemerkenswerte Veröffentlichungen

Verfasser	Pubmed ID	Journal	Anwendung
Shanshan Li	33014158	Oncol Lett	WB
Wei Zhong	30456333	JACC Basic Transl Sci	WB
Xiang Sun	31515281	J Exp Med	WB

Lagerung

Lagerungsbedingungen:

Bei -20°C lagern. Nach dem Versand ein Jahr lang stabil

Lagerungspuffer:

PBS mit 0.02% Natriumazid und 50% Glycerin pH 7.3.

Aliquotieren ist nicht notwendig bei -20°C Lagerung

*** 20ul-Größen enthalten 0.1% BSA

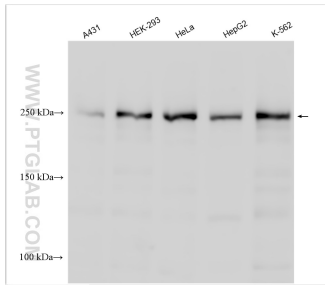
For technical support and original validation data for this product please contact:

T: 1 (888) 4PTGLAB (1-888-478-4522) (toll free in USA), or 1(312) 455-8498 (outside USA)

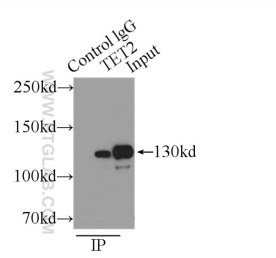
E: proteintech@ptglab.com
W: ptglab.com

This product is exclusively available under Proteintech Group brand and is not available to purchase from any other manufacturer.

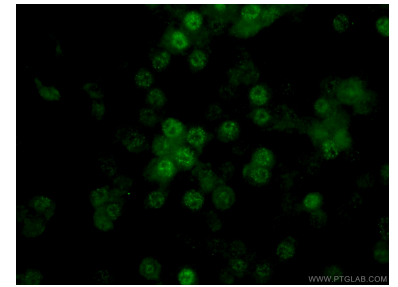
Ausgewählte Validierungsdaten



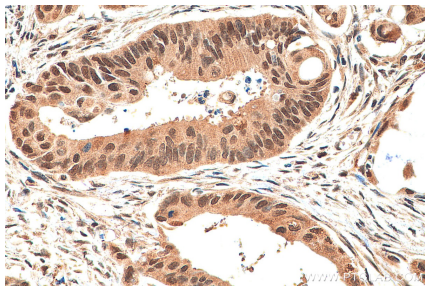
Various lysates were subjected to SDS PAGE followed by western blot with 21207-1-AP (TET2 antibody) at dilution of 1:1000 incubated at room temperature for 1.5 hours.



IP Result of anti-TET2 (IP:21207-1-AP, 3ug; Detection:21207-1-AP 1:500) with mouse brain tissue lysate 4000ug.



Immunofluorescent analysis of (4% PFA) fixed Neuro-2a cells using 21207-1-AP (TET2 antibody) at dilution of 1:50 and Alexa Fluor 488-Conjugated AffiniPure Goat Anti-Rabbit IgG(H+L).



Immunohistochemical analysis of paraffin-embedded human colon cancer tissue slide using 21207-1-AP (TET2 antibody) at dilution of 1:500 (under 40x lens). Heat mediated antigen retrieval with Tris-EDTA buffer (pH 9.0).