

Nur für Forschungszwecke

PLOD2-Specific Polyklonaler Antikörper



Katalog-Nr.: 21214-1-AP

Vorgestelltes Produkt

45 Publikationen

Allgemeine Informationen

Katalog-Nr.: 21214-1-AP	GenBank-Zugangsnummer: BC037169	Reinigungsmethode: Antigen-Affinitätsreinigung
Größe: 150ul, Konzentration: 500 µg/ml von Nanodrop;	GeneID (NCBI): 5352	Empfohlene Verdünnungen: WB 1:500-1:3000 IP 0.5-4.0 µg für IP und 1:500-1:1000 für WB
Wirt: Kaninchen	Vollständiger Name: procollagen-lysine, 2-oxoglutarate 5-dioxygenase 2	IHC 1:50-1:500 IF 1:50-1:500
Isotyp: IgG	Berechnete Masse: 758 aa, 85 kDa	
Immunogen Katalognummer: AG15614	Beobachtete Masse: 87 kDa	

Anwendungen

Geprüfte Anwendungen:
FC, IF, IHC, IP, WB, ELISA

In Publikationen genannte Anwendungen:
IF, IHC, WB

Getestete Reaktivität:
Human, Maus, Ratte

Zitierte Arten:
Human, Maus, Zebrafisch

Hinweis-IHC: Antigenmaskierung mit TE-Puffer pH 9,0 empfohlen. (*) Wahlweise kann die Antigenmaskierung auch mit Citratpuffer pH 6,0 erfolgen.

Positivkontrollen:

WB: Caco-2-Zellen, A431-Zellen, DU 145-Zellen, HEK-293-Zellen, HeLa-Zellen, HepG2-Zellen, HT-1080.Zellen, Maushodengewebe, Mauslebergewebe, Maus-Pankreasgewebe

IP: Maushodengewebe,

IHC: humanes Leberkarzinomgewebe, humanes Pankreasgewebe, humanes Skelettmuskelgewebe

IF: HeLa-Zellen,

Hintergrundinformationen

PLOD2, also named as LH2, forms hydroxylysine residues in -Xaa-Lys-Gly- sequences in collagens. It is a potential novel prognostic factor for HCC patients following surgery. Among the PLOD genes, PLOD2 contributes to cancer prognosis and angiogenesis. Several authors have reported that PLOD2 expression might provide prognostic information about malignant tumours such as glioblastoma. PLOD2 expression is a useful biomarker for the effects of antiangiogenic treatment for malignancy. (PMID:22098155). It has 2 isoforms produced by alternative splicing and seven glycosylation sites. This antibody is specific to PLOD2.

Bemerkenswerte Veröffentlichungen

Verfasser	Pubmed ID	Journal	Anwendung
Tomoaki Saito	34718219	Bone	WB, IHC
Ryunosuke Nozaki	34875533	Biochem Biophys Res Commun	WB
Bernd Stratmann	27898103	Sci Rep	WB

Lagerung

Lagerungsbedingungen:

Bei -20°C lagern. Nach dem Versand ein Jahr lang stabil

Lagerungspuffer:

PBS mit 0.02% Natriumazid und 50% Glycerin pH 7.3.

Aliquotieren ist nicht notwendig bei -20°C Lagerung

*** 20ul-Größen enthalten 0.1% BSA

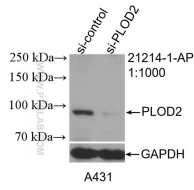
For technical support and original validation data for this product please contact:

T: 1 (888) 4PTGLAB (1-888-478-4522) (toll free in USA), or 1(312) 455-8498 (outside USA)

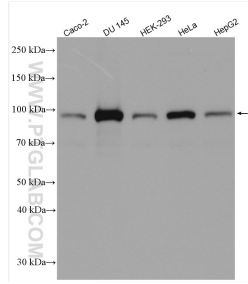
E: proteintech@ptglab.com
W: ptglab.com

This product is exclusively available under Proteintech Group brand and is not available to purchase from any other manufacturer.

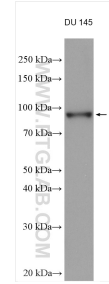
Ausgewählte Validierungsdaten



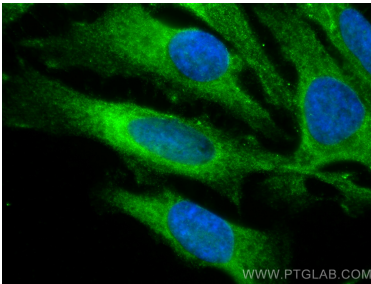
WB result of PLOD2-Specific antibody (21214-1-AP; 1:1000; incubated at room temperature for 1.5 hours) with sh-Control and sh-PLOD2-Specific transfected A431 cells.



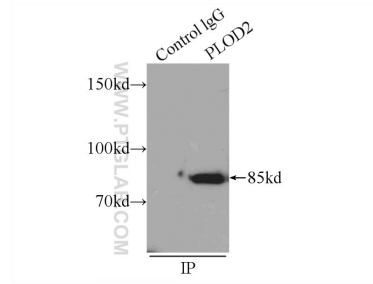
Various lysates were subjected to SDS PAGE followed by western blot with 21214-1-AP (PLOD2-Specific antibody) at dilution of 1:1500 incubated at room temperature for 1.5 hours.



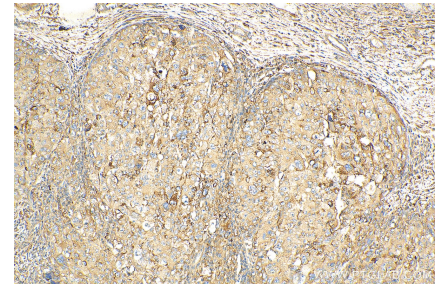
DU 145 cells lysates were subjected to SDS PAGE followed by western blot with 21214-1-AP (PLOD2-Specific antibody) at dilution of 1:1500 incubated at room temperature for 1.5 hours.



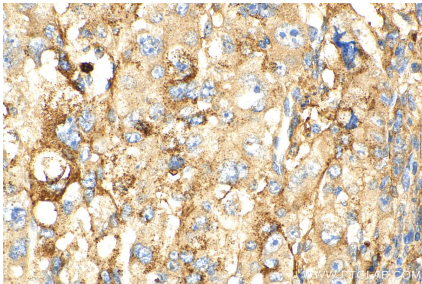
Immunofluorescent analysis of (-20°C Methanol) fixed HeLa cells using PLOD2-Specific antibody (21214-1-AP) at dilution of 1:200 and CoraLite®488-Conjugated AffiniPure Goat Anti-Rabbit IgG(H+L).



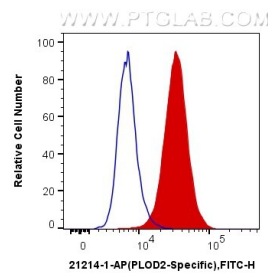
IP Result of anti-PLOD2-Specific (IP:21214-1-AP, 4ug; Detection:21214-1-AP 1:500) with mouse testis tissue lysate 5000ug.



Immunohistochemical analysis of paraffin-embedded human liver cancer tissue slide using 21214-1-AP (PLOD2-Specific antibody) at dilution of 1:200 (under 10x lens). Heat mediated antigen retrieval with Tris-EDTA buffer (pH 9.0).



Immunohistochemical analysis of paraffin-embedded human liver cancer tissue slide using 21214-1-AP (PLOD2-Specific antibody) at dilution of 1:200 (under 40x lens). Heat mediated antigen retrieval with Tris-EDTA buffer (pH 9.0).



1×10^6 HeLa cells were intracellularly stained with 0.4 ug Anti-Human PLOD2-Specific (21214-1-AP) and CoraLite®488-Conjugated AffiniPure Goat Anti-Rabbit IgG(H+L) at dilution 1:1000 (red), or 0.4 ug x. Cells were fixed with 4% PFA and permeabilized with Flow Cytometry Perm Buffer (PF00011-C).