

Allgemeine Informationen

Katalog-Nr.: 21260-1-AP	GenBank-Zugangsnummer: BC112219	Reinigungsmethode: Antigen-Affinitätsreinigung
Größe: 150ul, Konzentration: 350 µg/ml von 847 Nanodrop und 233 µg/ml durch die Bradford-Methode mit BSA als Standard;	GeneID (NCBI): 847	Empfohlene Verdünnungen: WB 1:2000-1:16000 IHC 1:250-1:1000 IF 1:10-1:100
Wirt: Kaninchen	Vollständiger Name: catalase	
Isotyp: IgG	Berechnete Masse: 60 kDa	
Immunogen Katalognummer: AG15383	Beobachtete Masse: 60 kDa	

Anwendungen

Geprüfte Anwendungen: IF, IHC, WB, ELISA	Positivkontrollen: WB : HeLa-Zellen, HepG2-Zellen, Jurkat-Zellen, L02-Zellen, Mauslebergewebe, Raji-Zellen, Rattenlebergewebe
In Publikationen genannte Anwendungen: FC, IF, IHC, WB	IHC : humanes Leberkarzinomgewebe, humanes Leberzirrhosegewebe
Getestete Reaktivität: Human, Maus, Ratte	IF : HepG2-Zellen, HeLa-Zellen
Zitierte Arten: Hausschwein, Human, Maus, Ratte, Rind, Ziege, Meretrix Meretrix, Pilz, Fledermaus	

Hinweis-IHC: Antigendemaskierung mit TE-Puffer pH 9,0 empfohlen. (*) Wahlweise kann die Antigendemaskierung auch mit Citratpuffer pH 6,0 erfolgen.

Hintergrundinformationen

Catalase belongs to the catalase family. CAT occurs in almost all aerobically respiring organisms and serves to protect cells from the toxic effects of hydrogen peroxide. CAT promotes growth of cells including T-cells, B-cells, myeloid leukemia cells, melanoma cells, mastocytoma cells and normal and transformed fibroblast cells. CAT catalyzes the reaction: $2 \text{H}_2\text{O}_2 = \text{O}_2 + 2 \text{H}_2\text{O}$. Defects in CAT are the cause of acatalasia (ACATLAS) which is also known as acatalasemia.

Bemerkenswerte Veröffentlichungen

Verfasser	Pubmed ID	Journal	Anwendung
Wei Cai	36170234	Autophagy	IF
Lin-Yu Jin	36164394	Oxid Med Cell Longev	WB
Hong Zou	36139126	Biomolecules	WB

Lagerung

Lagerungsbedingungen:
Bei -20°C lagern. Nach dem Versand ein Jahr lang stabil

Lagerungspuffer:
PBS mit 0.02% Natriumazid und 50% Glycerin pH 7.3.

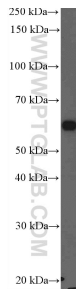
Aliquotieren ist nicht notwendig bei -20°C Lagerung

***** 20ul-Größen enthalten 0.1% BSA**

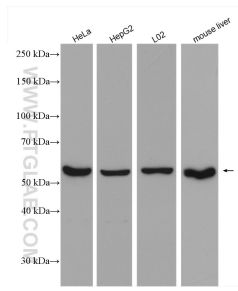
For technical support and original validation data for this product please contact:
T: 1 (888) 4PTGLAB (1-888-478-4522) (toll free in USA), or 1(312) 455-8498 (outside USA)
E: proteintech@ptglab.com
W: ptglab.com

This product is exclusively available under Proteintech Group brand and is not available to purchase from any other manufacturer.

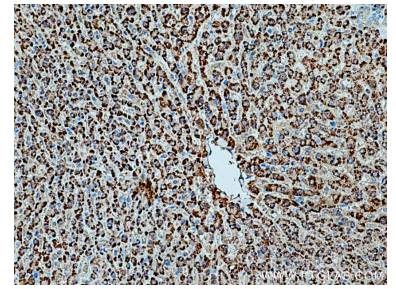
Ausgewählte Validierungsdaten



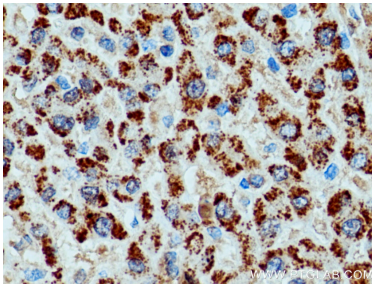
Jurkat cells were subjected to SDS PAGE followed by western blot with 21260-1-AP (Catalase Antibody) at dilution of 1:1000 incubated at room temperature for 1.5 hours.



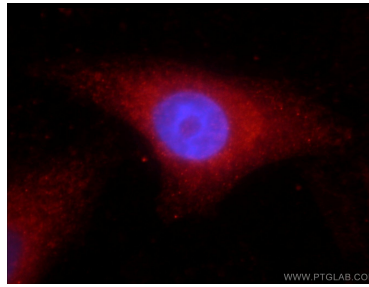
Various lysates were subjected to SDS PAGE followed by western blot with 21260-1-AP (Catalase antibody) at dilution of 1:8000 incubated at room temperature for 1.5 hours.



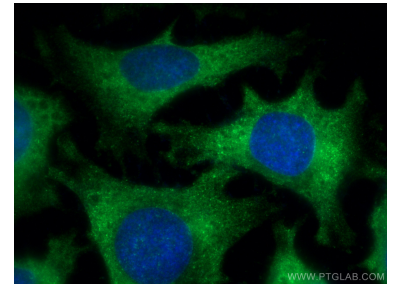
Immunohistochemical analysis of paraffin-embedded human liver cancer tissue slide using 21260-1-AP (Catalase antibody) at dilution of 1:500 (under 10x lens). Heat mediated antigen retrieval with Tris-EDTA buffer (pH 9.0).



Immunohistochemical analysis of paraffin-embedded human liver cancer tissue slide using 21260-1-AP (Catalase antibody) at dilution of 1:500 (under 40x lens). Heat mediated antigen retrieval with Tris-EDTA buffer (pH 9.0).



Immunofluorescent analysis of HepG2 cells using 21260-1-AP (Catalase antibody) at dilution of 1:25 and Rhodamine-Goat anti-Rabbit IgG.



Immunofluorescent analysis of (-20°C Methanol) fixed HeLa cells using Catalase antibody (21260-1-AP) at dilution of 1:100 and CoraLite®488-Conjugated AffiniPure Goat Anti-Rabbit IgG(H+L).