

Nur für Forschungszwecke

# RB1CC1 Polyklonaler Antikörper

Katalog-Nr.: 21269-1-AP

Vorgestelltes Produkt



## Allgemeine Informationen

Katalog-Nr.:  
21269-1-AP

Größe:

150ul, Konzentration: 450 µg/ml von  
Nanodrop und 380 µg/ml durch die  
Bradford-Methode mit BSA als  
Standard;

Wirt:

Kaninchen

Isotyp:

IgG

Immunogen Katalognummer:  
AG15739

GenBank-Zugangsnummer:

BC017556

GeneID (NCBI):

9821

Vollständiger Name:

RB1-inducible coiled-coil 1

Berechnete Masse:

1594 aa, 183 kDa

Beobachtete Masse:

200 kDa

Reinigungsmethode:

Antigen-Affinitätsreinigung

Empfohlene Verdünnungen:

WB 1:500-1:3000

## Anwendungen

Geprüfte Anwendungen:

WB, ELISA

Getestete Reaktivität:

Human, Maus, Ratte

Positivkontrollen:

WB: HeLa-Zellen, HEK-293-Zellen, MCF-7-Zellen

## Hintergrundinformationen

RB1CC1, also named as RBICC, is implicated in the regulation of RB1 expression and functions as a DNA-binding transcription factor. It is a potent regulator of the RB1 pathway and a mediator that plays a crucial role in muscular differentiation. Its expression is, thus, a prerequisite for myogenic differentiation. Involved in autophagy. RB1CC1 is required for autophagosome formation. It is probably involved in the tumorigenesis of breast cancer. RB1CC1 is frequently mutated in breast cancer and shows characteristics of a classical tumor suppressor gene. This antibody is a rabbit polyclonal antibody raised against residues near the N terminus of human RB1CC1.

## Lagerung

Lagerungsbedingungen:

Bei -20°C lagern. Nach dem Versand ein Jahr lang stabil

Lagerungspuffer:

PBS mit 0.02% Natriumazid und 50% Glycerin pH 7.3.

Aliquotieren ist nicht notwendig bei -20°C Lagerung

\*\*\* 20ul-Größen enthalten 0.1% BSA

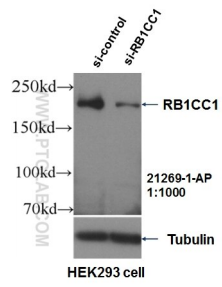
For technical support and original validation data for this product please contact:

T: 1 (888) 4PTGLAB (1-888-478-4522) (toll free  
in USA), or 1(312) 455-8498 (outside USA)

E: [proteintech@ptglab.com](mailto:proteintech@ptglab.com)  
W: [ptglab.com](http://ptglab.com)

This product is exclusively available under Proteintech Group brand and is not available to purchase from any other manufacturer.

## Ausgewählte Validierungsdaten



WB result of RB1CC1 antibody (21269-1-AP, 1:1000) with si-Control and si-RB1CC1 transfected HEK293 cells.



HeLa cells were subjected to SDS PAGE followed by western blot with 21269-1-AP (RB1CC1 antibody) at dilution of 1:500 incubated at room temperature for 1.5 hours.