

Nur für Forschungszwecke

JAML Polyklonaler Antikörper

Katalog-Nr.: 21302-1-AP

3 Publikationen



Allgemeine Informationen

Katalog-Nr.: 21302-1-AP	GenBank-Zugangsnummer: BC100797	Reinigungsmethode: Antigen-Affinitätsreinigung
Größe: 150ul, Konzentration: 500 µg/ml von Nanodrop und 333 µg/ml durch die Bradford-Methode mit BSA als Standard;	GeneID (NCBI): 120425	Empfohlene Verdünnungen: WB 1:1000-1:4000 IHC 1:20-1:200 IF 1:10-1:100
Wirt: Kaninchen	Vollständiger Name: adhesion molecule, interacts with CXADR antigen 1	
Isotyp: IgG	Berechnete Masse: 394 aa, 44 kDa	
Immunogen Katalognummer: AG15900	Beobachtete Masse: 44 kDa, 50-70 kDa	

Anwendungen

Geprüfte Anwendungen: FC, IF, IHC, WB, ELISA	Positivkontrollen: WB: HL-60-Zellen, Jurkat-Zellen, L02-Zellen IHC: humanes Milzgewebe, IF: HeLa-Zellen,
In Publikationen genannte Anwendungen: IF, IHC, WB	
Getestete Reaktivität: Human	
Zitierte Arten: Human, Maus	

Hinweis-IHC: Antigendemaskierung mit TE-Puffer pH 9,0 empfohlen. (*) Wahlweise kann die Antigendemaskierung auch mit Citratpuffer pH 6,0 erfolgen.

Hintergrundinformationen

Junctional adhesion molecules (JAM-A, JAM-B, and JAM-C) are endothelial and epithelial adhesion molecules involved in the recruitment of circulating leukocytes to inflammatory sites (PMID: 19064666). JAML (junctional adhesion molecule-like), also known as AMICA1, is related to JAM proteins. It contains 2 extracellular immunoglobulin-like domains, a transmembrane segment, and a cytoplasmic tail. JAML is expressed on leukocytes and promotes their adhesion to endothelial cells (PMID: 12869515). JAML can regulate neutrophil transepithelial migration via binding interactions with epithelial coxsackie and adenovirus receptor (CAR) (PMID: 15800062). The full-length human JAML protein has a calculated molecular weight of 44 kDa. This antibody raised against 40-275 aa of human JAML protein detects bands with molecular weight of 44 kDa, and 50-70 kDa which probably represent different glycoforms of the protein (PMID: 12869515; 24621992; 15800062).

Bemerkenswerte Veröffentlichungen

Verfasser	Pubmed ID	Journal	Anwendung
Qian Wu	35672776	J Transl Med	IHC,IF
Yu Sun	31101724	Clin Sci (Lond)	IHC,IF
Weï Gu	35090936	Eur J Pharmacol	WB,IHC

Lagerung

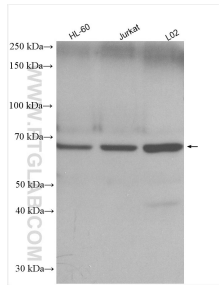
Lagerungsbedingungen:
Bei -20°C lagern. Nach dem Versand ein Jahr lang stabil
Lagerungspuffer:
PBS mit 0.02% Natriumazid und 50% Glycerin pH 7.3.
Aliquotieren ist nicht notwendig bei -20°C Lagerung

*** 20ul-Größen enthalten 0.1% BSA

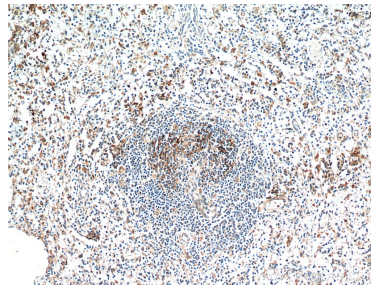
For technical support and original validation data for this product please contact:
T: 1 (888) 4PTGLAB (1-888-478-4522) (toll free in USA), or 1(312) 455-8498 (outside USA)
E: proteintech@ptglab.com
W: ptglab.com

This product is exclusively available under Proteintech Group brand and is not available to purchase from any other manufacturer.

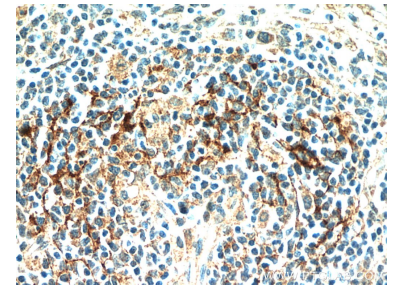
Ausgewählte Validierungsdaten



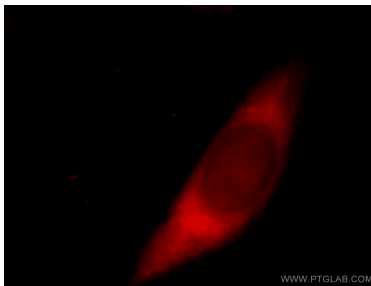
Various lysates were subjected to SDS PAGE followed by western blot with 21302-1-AP (JAML antibody) at dilution of 1:2000 incubated at room temperature for 1.5 hours.



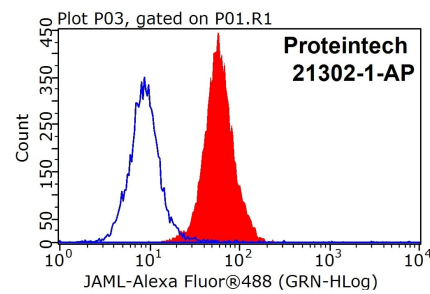
Immunohistochemical analysis of paraffin-embedded human spleen using 21302-1-AP (JAML antibody) at dilution of 1:100 (under 10x lens).



Immunohistochemical analysis of paraffin-embedded human spleen using 21302-1-AP (JAML antibody) at dilution of 1:100 (under 40x lens).



Immunofluorescent analysis of HeLa cells, using AMICA1 antibody 21302-1-AP at 1:25 dilution and Rhodamine-labeled goat anti-rabbit IgG (red).



1x10⁶ HeLa cells were stained with 0.2ug JAML antibody (21302-1-AP, red) and control antibody (blue). Fixed with 90% MeOH blocked with 3% BSA (30 min). FITC-Goat anti-Rabbit IgG with dilution 1:100.