

Nur für Forschungszwecke

C9orf7 / CACFD1 Polyklonaler Antikörper

Katalog-Nr.: 21330-1-AP



Allgemeine Informationen

Katalog-Nr.: 21330-1-AP	GenBank-Zugangsnummer: BC030558	Reinigungsmethode: Antigen-Affinitätsreinigung
Größe: 150ul, Konzentration: 400 µg/ml von Nanodrop;	GeneID (NCBI): 11094	Empfohlene Verdünnungen: WB 1:500-1:2000
Wirt: Kaninchen	Vollständiger Name: chromosome 9 open reading frame 7	
Isotyp: IgG	Berechnete Masse: 172 aa, 18 kDa	
Immunogen Katalognummer: AG15336	Beobachtete Masse: ~25 kDa	

Anwendungen

Geprüfte Anwendungen: WB, ELISA	Positivkontrollen: WB : Maushodengewebe, Rattenhodengewebe
Getestete Reaktivität: Human, Maus, Ratte	

Hintergrundinformationen

Calcium Channel Flower Domain Containing 1 (CACFD1) also named as C9orf7 or human Flower protein (hFWE). In Drosophila, cell selection uses a cell selection mechanism based on 'fitness fingerprints', which allow it to delay ageing, prevent developmental malformations and replace old tissues during regeneration. At the molecular level, these fitness fingerprints consist of combinations of Flower membrane proteins. Proteins that indicate reduced fitness are called Flower-Lose, because they are expressed in cells marked to be eliminated. It has different isoforms, the calculated MW rang from 14-25 kDa. 21330-1-AP can detect a band around 25 kDa.(PMID:31341286)

Lagerung

Lagerungsbedingungen:
Bei -20°C lagern. Nach dem Versand ein Jahr lang stabil
Lagerungspuffer:
PBS mit 0.02% Natriumazid und 50% Glycerin pH 7.3.
Aliquotieren ist nicht notwendig bei -20°C Lagerung

***** 20ul-Größen enthalten 0.1% BSA**

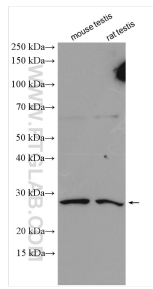
For technical support and original validation data for this product please contact:

T: 1 (888) 4PTGLAB (1-888-478-4522) (toll free in USA), or 1(312) 455-8498 (outside USA)

E: proteintech@ptglab.com
W: ptglab.com

This product is exclusively available under Proteintech Group brand and is not available to purchase from any other manufacturer.

Ausgewählte Validierungsdaten



Various lysates were subjected to SDS PAGE followed by western blot with 21330-1-AP (C9orf7 antibody) at dilution of 1:1000 incubated at room temperature for 1.5 hours.