

Nur für Forschungszwecke

ASCL2 Polyklonaler Antikörper

Katalog-Nr.: 21368-1-AP



Allgemeine Informationen

| | | |
|---|---|--|
| Katalog-Nr.: 21368-1-AP | GenBank-Zugangsnummer: BC057801 | Reinigungsmethode: Antigen-Affinitätsreinigung |
| Größe: 150ul, Konzentration: 550 µg/ml von Nanodrop; | GeneID (NCBI): 430 | Empfohlene Verdünnungen: WB 1:500-1:1000 |
| Wirt: Kaninchen | Vollständiger Name: achaete-scute complex homolog 2 (Drosophila) | |
| Isotyp: IgG | Berechnete Masse: 193 aa, 20 kDa | |
| Immunogen Katalognummer: AG15839 | Beobachtete Masse: 20 kDa | |

Anwendungen

| | |
|---|--|
| Geprüfte Anwendungen: WB, ELISA | Positivkontrollen: WB : MKN-45-Zellen, Caco-2-Zellen |
| Getestete Reaktivität: Human | |

Hintergrundinformationen

Achaete-scute complex homolog 2 (Drosophila), also known as ASCL2, is an imprinted human gene. This gene is involved in the determination of the neuronal precursors in the peripheral nervous system and the central nervous system, particularly important during implantation of the developing embryo, specifically in placental development and neuronal precursor determination. ASCL2 has been reported involved in tumor progression, being upregulated in colorectal tumors, and involvement in metastasis could be attributed to ASCL2-promoted cellular self-renewal as opposed to cellular differentiation (PMID: 30096149 16568095).

Lagerung

Lagerungsbedingungen:
Bei -20°C lagern. Nach dem Versand ein Jahr lang stabil
Lagerungspuffer:
PBS mit 0.02% Natriumazid und 50% Glycerin pH 7.3.
Aliquotieren ist nicht notwendig bei -20°C Lagerung

*** 20ul-Größen enthalten 0.1% BSA

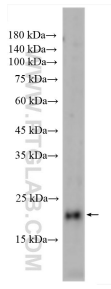
For technical support and original validation data for this product please contact:

T: 1 (888) 4PTGLAB (1-888-478-4522) (toll free
in USA), or 1(312) 455-8498 (outside USA)

E: proteintech@ptglab.com
W: ptglab.com

This product is exclusively available under Proteintech Group brand and is not available to purchase from any other manufacturer.

Ausgewählte Validierungsdaten



MKN-45 cells were subjected to SDS PAGE followed by western blot with 21368-1-AP (ASCL2 antibody) at dilution of 1:500 incubated at room temperature for 1.5 hours.