

Nur für Forschungszwecke

ALDH1L2 Polyklonaler Antikörper

Katalog-Nr.: 21391-1-AP

4 Publikationen



Allgemeine Informationen

Katalog-Nr.: 21391-1-AP	GenBank-Zugangsnummer: BC103935	Reinigungsmethode: Antigen-Affinitätsreinigung
Größe: 150ul, Konzentration: 600 µg/ml von Nanodrop;	GeneID (NCBI): 160428	Empfohlene Verdünnungen: WB 1:500-1:3000 IHC 1:20-1:200
Wirt: Kaninchen	Vollständiger Name: aldehyde dehydrogenase 1 family, member L2	
Isotyp: IgG	Berechnete Masse: 923 aa, 102 kDa	
Immunogen Katalognummer: AG16046	Beobachtete Masse: 102 kDa, 89 kDa	

Anwendungen

Geprüfte Anwendungen:

IHC, WB, ELISA

In Publikationen genannte Anwendungen:

IHC, WB

Getestete Reaktivität:

Human, Maus, Ratte

Zitierte Arten:

Human, Maus

Hinweis-IHC: Antigenmaskierung mit TE-Puffer pH 9,0 empfohlen. (*) Wahlweise kann die Antigenmaskierung auch mit Citratpuffer pH 6,0 erfolgen.

Positivkontrollen:

WB: Maus-Pankreasgewebe, Ratten-Pankreasgewebe

IHC: humanes Pankreasgewebe, humanes Herzgewebe

Hintergrundinformationen

ALDH1L2 (Aldehyde dehydrogenase family 1 member L2) is also named as mitochondrial 10-FTHFDH, mtFDH and belongs to the aldehyde dehydrogenase family and ALDH1L subfamily. The ALDH1L2 gene has three transcriptional variants with the molecular weight of 102 kDa, 42 kDa and 89 kDa (PMID:19823103). It is a mitochondrial enzyme, a likely source of CO₂ production from 10-formyltetrahydrofolate in mitochondria and playing an essential role in the distribution of one-carbon groups between the cytosolic and mitochondrial compartments of the cell (PMID: 20498374). It also has dehydrogenase/hydrolase activities similar to cytosolic FDH (ALDH1L1). The native ALDH1L2 has been reported to exist as a dimer or tetramer (PMID:7822273).

Bemerkenswerte Veröffentlichungen

Verfasser	Pubmed ID	Journal	Anwendung
Alessandra Fiore	35245456	Mol Cell	WB
Eduardo Balsa	32483148	Nat Commun	WB
Yang Zhang	35857842	Sci Adv	IHC

Lagerung

Lagerungsbedingungen:

Bei -20°C lagern. Nach dem Versand ein Jahr lang stabil

Lagerungspuffer:

PBS mit 0.02% Natriumazid und 50% Glycerin pH 7.3.

Aliquotieren ist nicht notwendig bei -20°C Lagerung

*** 20ul-Größen enthalten 0.1% BSA

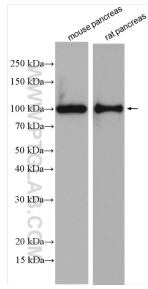
For technical support and original validation data for this product please contact:

T: 1 (888) 4PTGLAB (1-888-478-4522) (toll free in USA), or 1(312) 455-8498 (outside USA)

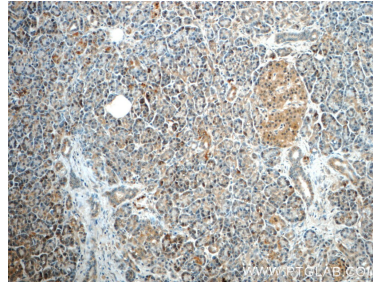
E: proteintech@ptglab.com
W: ptglab.com

This product is exclusively available under Proteintech Group brand and is not available to purchase from any other manufacturer.

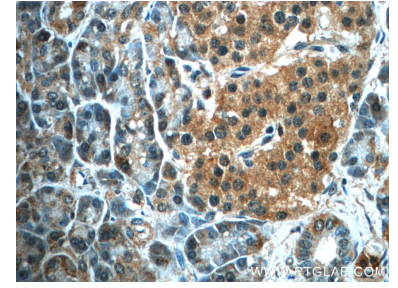
Ausgewählte Validierungsdaten



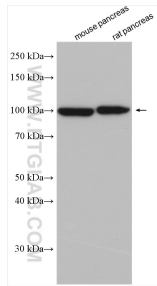
Various lysates were subjected to SDS PAGE followed by western blot with 21391-1-AP (ALDH1L2 antibody) at dilution of 1:1500 incubated at room temperature for 1.5 hours.



Immunohistochemical analysis of paraffin-embedded human pancreas slide using 21391-1-AP (ALDH1L2 Antibody) at dilution of 1:50.



Immunohistochemical analysis of paraffin-embedded human pancreas slide using 21391-1-AP (ALDH1L2 Antibody) at dilution of 1:50.



Various lysates were subjected to SDS PAGE followed by western blot with 21391-1-AP (ALDH1L2 antibody) at dilution of 1:8000 incubated at room temperature for 1.5 hours.