

Nur für Forschungszwecke

# NF-H/NF200 Polyklonaler Antikörper



Katalog-Nr.: 21471-1-AP

4 Publikationen

## Allgemeine Informationen

<b>Katalog-Nr.:</b> 21471-1-AP	<b>GenBank-Zugangsnummer:</b> BC073969	<b>Reinigungsmethode:</b> Antigen-Affinitätsreinigung
<b>Größe:</b> 150ul, Konzentration: 300 µg/ml von Nanodrop und 213 µg/ml durch die Bradford-Methode mit BSA als Standard;	<b>GeneID (NCBI):</b> 4744	<b>Empfohlene Verdünnungen:</b> WB 1:1000-1:4000 IHC 1:50-1:500
<b>Wirt:</b> Kaninchen	<b>Vollständiger Name:</b> neurofilament, heavy polypeptide	
<b>Isotyp:</b> IgG	<b>Berechnete Masse:</b> 1026 aa, 112 kDa	
<b>Immunogen Katalognummer:</b> AG15249	<b>Beobachtete Masse:</b> 200 kDa	

## Anwendungen

<b>Geprüfte Anwendungen:</b> FC, IHC, WB, ELISA	<b>Positivkontrollen:</b> WB : Maushirngewebe, IHC : humanes Hirngewebe,
<b>In Publikationen genannte Anwendungen:</b> IF, WB	
<b>Getestete Reaktivität:</b> Human, Maus, Ratte	
<b>Zitierte Arten:</b> Maus, Ratte, Affen	
<b>Hinweis-IHC: Antigendemaskierung mit TE-Puffer pH 9,0 empfohlen. (*) Wahlweise kann die Antigendemaskierung auch mit Citratpuffer pH 6,0 erfolgen.</b>	

## Hintergrundinformationen

NEFH, also named as KIAA0845 and NFH, belongs to the intermediate filament family. It has an important function in mature axons that is not subserved by the two smaller NF proteins. Neurofilaments are the 10nm intermediate filaments found specifically in neurons. They are a major component of the cell's cytoskeleton, and provide support for normal axonal radial growth. Neurofilaments usually contain three intermediate filament proteins: L, M, and H which are involved in the maintenance of neuronal caliber. The names given to the three major neurofilament subunits are based upon the apparent molecular weight of the mammalian subunits on SDS-PAGE: NF-L, 65-68kd; NF-M, 145-160kd and NF-H, 200-220kd. This antibody recognizes NEFH only.

## Bemerkenswerte Veröffentlichungen

Verfasser	Pubmed ID	Journal	Anwendung
Feng Yue	34704001	iScience	IF
Huanliang Liu	31829301	Sci Total Environ	WB
Jeffrey M Gimble	30881803	Plast Reconstr Surg Glob Open	IF

## Lagerung

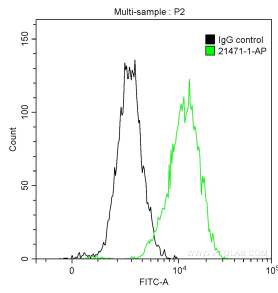
**Lagerungsbedingungen:**  
Bei -20°C lagern. Nach dem Versand ein Jahr lang stabil  
**Lagerungspuffer:**  
PBS mit 0.02% Natriumazid und 50% Glycerin pH 7.3.  
Aliquotieren ist nicht notwendig bei -20°C Lagerung

\*\*\* 20ul-Größen enthalten 0.1% BSA

For technical support and original validation data for this product please contact:  
T: 1 (888) 4PTGLAB (1-888-478-4522) (toll free in USA), or 1(312) 455-8498 (outside USA)  
E: proteintech@ptglab.com  
W: ptglab.com

This product is exclusively available under Proteintech Group brand and is not available to purchase from any other manufacturer.

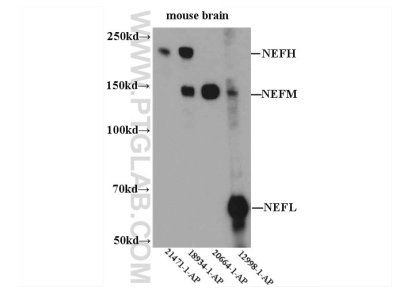
## Ausgewählte Validierungsdaten



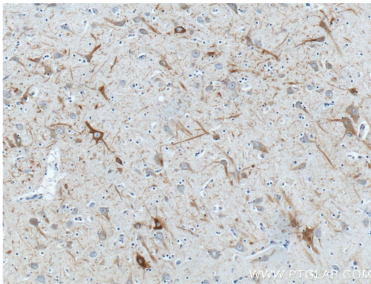
1X10<sup>6</sup> SH-SY5Y cells were intracellularly stained with 0.5 ug Anti-Human NF-H (21471-1-AP) and CoraLite®488-Conjugated AffiniPure Goat Anti-Rabbit IgG(H+L) at dilution 1:1000 (green), and 0.5 ug Control Antibody. Cells were fixed with 90% MeOH.



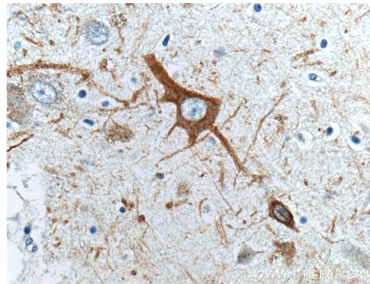
mouse brain tissue were subjected to SDS PAGE followed by western blot with 21471-1-AP (NF-H antibody) at dilution of 1:2000 incubated at room temperature for 1.5 hours.



WB result of 21471-1-AP.



Immunohistochemical analysis of paraffin-embedded human brain tissue slide using 21471-1-AP (NF-H antibody at dilution of 1:200 (under 10x lens).



Immunohistochemical analysis of paraffin-embedded human brain tissue slide using 21471-1-AP (NF-H antibody at dilution of 1:200 (under 40x lens).